

DNA Sequence Specificity for Topoisomerase II Poisoning by the Quinoxaline Anticancer Drugs XK469 and CQS

HANLIN GAO,¹ EDITH F. YAMASAKI, KENNETH K. CHAN, LINUS L. SHEN, and ROBERT M. SNAPKA

Departments of Radiology (H.G., E.F.Y., R.M.S.) and Molecular Virology, Immunology, and Medical Genetics (H.G., R.M.S.), College of Medicine and Public Health and College of Pharmacy (K.K.C.), the Ohio State University, Columbus, Ohio; and Abbott Laboratories (L.L.S.), Abbott Park, Illinois

Received November 8, 2002; accepted March 10, 2003

This article is available online at <http://molpharm.aspetjournals.org>

ABSTRACT

The two known antineoplastic quinoxaline topoisomerase II poisons, XK469 (NSC 697887) and CQS (chloroquinoxaline sulfonamide, NSC 339004), were compared for DNA cleavage site specificity, using purified human topoisomerase II α and human topoisomerase II β . The DNA cleavage intensity pattern for topoisomerase II α poisoning by CQS closely resembled that of VM-26, despite the lack of any apparent common pharmacophore. In contrast, the topoisomerase II α DNA cleavage intensity patterns of XK469 and CQS were very different from one another despite the similar overall structures of the two drugs. This suggests that the differences in DNA site specificity of topoisomerase II poisoning by XK469 and CQS may be caused by differences in their geometry, side chains, or electronic

structure. The topoisomerase II β -mediated DNA cleavage sites of CQS and XK469 were also very different from one another, adding further support to this idea. Earlier work has demonstrated that a number of specific topoisomerase II poisons show very similar patterns of DNA cleavage with either topoisomerase II α or topoisomerase II β , suggesting that the topoisomerase II isozymes play only a minor role in choices of DNA cleavage sites. However, both of the quinoxaline topoisomerase II poisons in this study showed distinctly different and unique DNA cleavage intensity patterns with each topoisomerase II isozyme. This indicates that topoisomerase II isozymes can play a major role in DNA cleavage site selection for some classes of topoisomerase II poisons.

Type II topoisomerases are enzymes that change the topology of DNA by introducing transient double-strand DNA strand breaks through which other DNA strands are passed. The covalent attachment of the topoisomerase II subunits to the DNA at the site of the DNA strand breaks may facilitate the short lifetime of the DNA cleavage intermediate. Topoisomerase II poisons are drugs that stabilize covalent enzyme-DNA intermediates of the topoisomerase reaction cycle in which the topoisomerase subunits are covalently linked to the DNA through 5'-phosphotyrosyl linkages (Chen and Liu, 1994). They are structurally diverse, and a number of them are standard anticancer agents (Chen and Liu, 1994). Their cytotoxicity is caused by complex DNA lesions that result from interactions of the drug-stabilized topoisomerase-DNA complexes with DNA replication complexes (Snapka, 1986; Hsiang et al., 1989; Shin and Snapka, 1990; Ryan et al., 1991; Haldane et al., 1993; Catapano et al., 1997). Different topo-

isomerase II poisons can cause very different patterns of strong and weak DNA cleavages (Tewey et al., 1984; Capranico et al., 1990; Pommier et al., 1992). The variability of DNA cleavage strength at different sites on the DNA is believed to result from a ternary complex in which the drug binds at the interface between the topoisomerase and the DNA. Because the DNA makes up part of the drug's binding pocket, this part of the binding pocket will vary with DNA sequence, and it is reasonable that structurally diverse topoisomerase II inhibitors would preferentially stabilize topoisomerase-DNA cleavage complexes at different DNA sequences. Topoisomerase II poisons may enhance DNA cleavage at sites that are normally topoisomerase II cleavage sites in the absence of drugs or may stimulate topoisomerase-mediated DNA cleavage at sites that are not normally detected in the absence of drugs (Capranico et al., 1993). Drugs such as VM-26 may show only low DNA site selectivity and stimulate topoisomerase II-DNA cleavage at many sites, whereas others may have greater site selectivity (Capranico et al., 1993). Some, such as clerocidin, streptonigrin, and amonafide have extreme DNA site selectivity and stimulate strong cleavage only at rare sites with very defined se-

This work was supported by National Cancer Institute grants R01-CA80961 (to R.M.S.), contract N01-CM57201 (to K.K.C.), and P30-CA16058 (to the Ohio State University Comprehensive Cancer Center).

¹ Present address: Molecular Neurogenetics Unit, Massachusetts General Hospital, Room 6214, 13th Street, Bldg. 149, Charlestown, MA 02129

ABBREVIATIONS: CQS, chloroquinoxaline sulfonamide (NSC 339004); XK469, (\pm)-2-[4-(7-chloro-2-quinoxalinyloxy)phenoxy]propionic acid (NSC 697887); VM-26, teniposide (NSC 122819); VP-16, etoposide (NSC 141540); ICRF-193, meso-2,3-bis(2,6-dioxopiperazin-4-yl)butane; GuHCl, guanidinium chloride.

quences (Capranico et al., 1994b; Capranico et al., 1997; Borgnetto et al., 1999).

The quinoxaline anticancer drugs CQS and XK469 (Fig. 1) were both found to have activity against solid tumors (Shoemaker, 1986; Valeriote et al., 1996; Corbett et al., 1998). In both cases, the molecular targets relevant to the anticancer activity remained elusive as the drugs progressed through animal model testing to human clinical trials. XK469 was found to be the first highly selective topoisomerase II β poison (Gao et al., 1999). Studies with topoisomerase II β knockout mouse cells confirmed the *in vitro* results and showed that topoisomerase II β is the cytotoxic target of XK469 *in vivo* (Snapka et al., 2001). Based on its structural similarity to XK469, CQS was studied for topoisomerase II activity and was found to be both a topoisomerase II α and II β poison (Gao et al., 2000). The reason that the topoisomerase II poisoning activity of CQS remained elusive for so long is the fact that the protein denaturant routinely used in topoisomerase poisoning assays, SDS, does not efficiently trap topoisomerase II-DNA cleavable complexes stabilized by CQS. Chaotropic protein denaturants, such as GuHCl and urea, trap the CQS-stabilized topoisomerase II-DNA cleavage complex efficiently, and when these denaturants are used, CQS topoisomerase II poisoning is readily detected both *in vivo* and *in vitro*. Another topoisomerase II-targeting drug, ICRF-193, has also recently been found to be similar to CQS in that its topoisomerase II poisoning is difficult to detect using SDS-based assays but readily detectable using GuHCl (Huang et al., 2001). CQS and XK469 remain the only known quinoxaline topoisomerase II poisons. As antineoplastic agents, they are remarkable for their low nonspecific toxicity and solid tumor activity.

Because of the unique properties of these two quinoxalines, both as topoisomerase II poisons and as anticancer drugs, the DNA sequence specificity of their activity with each human topoisomerase II isozyme is of special interest. The results discussed above suggest that their overall structure plays an important part in their interactions with topoisomerase II

isozymes, but the details of their structure and their electronic properties are clearly different, possibly accounting for the differences in topoisomerase II isozyme specificity and the requirement of chaotropic protein denaturants for detection of CQS stabilized topoisomerase II-DNA cleavage complexes. Our study tests the hypothesis that the structural and electronic differences in XK469 and CQS will strongly affect their patterns of topoisomerase II-mediated DNA cleavage.

Materials and Methods

Drugs and Reagents. XK469 (NSC 697887) was provided by the National Cancer Institute Drug Synthesis Branch, Bethesda, MD. CQS (chloroquinoxaline sulfonamide, NSC 339004) was provided by Dr. R. Shoemaker (National Cancer Institute, Bethesda, MD). VM-26 (teniposide, NSC 122819) was obtained from the National Cancer Institute, Division of Cancer Treatment, Natural Products Branch (Bethesda, MD). Dimethyl sulfoxide was the solvent for all drug stocks. Recombinant human topoisomerase II α was obtained from N. Osheroff (Vanderbilt University, Nashville, TN) (Kingma et al., 1997). Recombinant human topoisomerase II β was a generous gift of Dr. Caroline Austin, (University of Newcastle, Newcastle-upon-Tyne, UK) (Austin et al., 1995).

Mapping of Topoisomerase II-DNA Cleavage Sites. Sites of topoisomerase II mediated DNA cleavage stimulated by the drugs were mapped as described previously (Huang et al., 2001). Briefly, a DNA substrate consisting of a 516 base-pair *EcoRI-ScaI* fragment of pBR322 (residues 3846–4362) was labeled with ^{32}P by filling in the overhanging *EcoRI* end with Klenow fragment (USB Corp., Cleveland, OH) and a mix containing dCTP, dGTP, dTTP, and [α - ^{32}P -dATP] (3000 Ci/mmol; Amersham Biosciences, Piscataway, NJ). Topoisomerase II reaction mixes contained the end-labeled DNA fragment ($1-2 \times 10^5$ dpm), 10 mM HEPES-HCl, pH 7.9, 50 mM KCl, 5 mM MgCl_2 , 50 mM NaCl, 0.1 mM EDTA, 1 mM ATP, and the drug being tested. Reactions were started by adding the topoisomerase (0.8 or 1.2 μg of human topoisomerase II α or II β , respectively), after a preincubation of the other components at 37°C for 5 min. These concentrations were chosen because they gave equal topoisomerase II poisoning with VM-26 (Huang et al., 2001). The epipodophyllotoxins VM-26 and VP-16 show little or no isozyme selectivity for topoisomerase II poisoning (Austin et al., 1995). The final reaction volume was 20 μl . After a 30-min incubation at 37°C, the reactions were terminated by addition of 2 μl of 4 M GuHCl. The DNA was ethanol-precipitated and then resuspended in proteinase K solution (0.2 mg/ml, 28 μl , 2 h, 45°C). The protein-free DNA was precipitated with ethanol and resuspended in gel loading buffer (80% formamide, 10 mM NaOH, 1 mM EDTA, 0.1% xylene cyanol, and 0.1% bromphenol blue). The samples were heated to 70°C for 2 min, cooled to room temperature, and then loaded onto a polyacrylamide sequencing gel (8% acrylamide, 19:1 acrylamide/bisacrylamide, and 7 M urea in Tris-borate buffer). Electrophoresis was done at 1800 V for 2 or 6 h, and the gel was then transferred to Whatman 3MM paper and exposed to Hyperfilm for autoradiography. The 2- and 6-h electrophoresis times gave better resolution of the smaller and larger DNA fragments and allowed more complete mapping of topoisomerase II-mediated cleavages on the target DNA. Sanger dideoxy DNA sequence ladders were made with the *fmol* cycle DNA sequencing system (Promega, Madison, WI). The primer, 5'-AAATTCTTGAA-GACGAAAGGGCC-3', complementary to the *EcoRI* end of the 516-base pair pBR322 fragment, was labeled at the 5'-end by T4 polynucleotide kinase with [γ - ^{32}P]ATP and used without further purification. The polymerase chain reaction was carried out for 30 cycles with *Taq* DNA polymerase, using the appropriate deoxy-/dideoxy-NTP mix for each reaction. The reactions were stopped by addition of *fmol* sequencing reaction stop solution, and the DNA was denatured at 70°C before gel loading. Because the sequenced strand

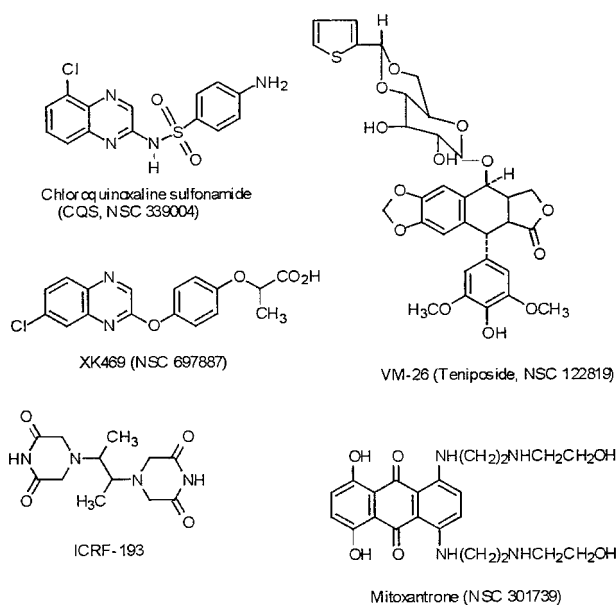


Fig. 1. Chemical structures of CQS, XK469, VM-26, mitoxantrone, and ICRF-193.

was labeled on the 5' *EcoRI* end and was complementary to the strand on which the topoisomerase-mediated sequences were mapped, it was necessary to translate the sequence to determine the cutting sites. The significance of differences in the occurrence of specific bases within cleavage sites was determined by comparing the observed and expected values based on exact polynomial probabilities.

Results

Topoisomerase II α . The results of this study are shown in Figs. 2 and 3. Figure 2 shows the patterns of topoisomerase II α - and II β -mediated DNA cleavage on short (2-h electrophoresis) DNA sequencing gels, and the results are summed up in Fig. 3, which indicates all of the sites stimulated by the various drugs, including many weak DNA cleavage sites that are not clear from Fig. 2. Longer (6-h) electrophoresis experiments (not shown) were also done to refine and/or confirm the mapping of specific DNA cleavage sites as indicated in Fig. 3. The pattern of drug stimulated topoisomerase II α -DNA cleavage was very similar for CQS and VM-26

(Fig. 2A). Both drugs tended to stimulate topoisomerase II α -DNA cleavages at the same sites; in addition, the relative strengths of the cleavages tended to be similar for CQS and VM-26. Several of these sites of strong CQS and VM-26 stimulated cleavage represent enhanced cleavage of normal topoisomerase II α cleavage sites (Fig. 2, lane α , sites G295, T313, A343, G346, A357, G361, and others). That fact that VM-26 tends to enhance normal topoisomerase II α cleavage sites has been noted by others (Capranico et al., 1993). Strong CQS and VM-26 stimulated cleavages can be seen at sites G295, G298, A343, G346, A357, and G361 as well as others. Moderate CQS and VM-26 cleavage sites can be seen at C396 and A399, whereas weak CQS and VM-26 cleavage sites are evident at T384 and A387. Topoisomerase II α has been reported to have an affinity for cleavage in alternating purine-pyrimidine (RY) repeats, resulting in multiple strong cleavages (Spitzner et al., 1990). A region enriched in purine-pyrimidine pairs occurs from position 301 to 310 (Fig. 3), and a number of strong and moderate VM-26- and CQS-stimulated cleavages are found in this region and the bases immediately flanking it. Although the sites of CQS- and VM-26-stimulated topoisomerase II α cleavage often show similar strengths for the two drugs, a few sites exist at which each drug uniquely stimulates strong cleavage. For instance, there are strong VM-26 cleavages at T355, G431, and A434, which are not matched by CQS stimulated cleavage. Likewise, there are CQS cleavages at G238, A248, A266, and C422 that are not matched by comparable VM-26 stimulated cleavages. Overall, however, the two drugs show very similar patterns of topoisomerase II α mediated DNA cleavage.

XK469-stimulated topoisomerase II α -DNA cleavages have a pattern that is very distinct from those of CQS and VM-26. Consistent with the finding that XK469 is a strong topoisomerase II β poison but a poor topoisomerase II α poison (Gao et al., 1999), the XK469 stimulated topoisomerase II α DNA cleavages are very weak. The strongest XK469 stimulated topoisomerase II α -DNA cleavages tend to be much weaker than those of CQS and VM-26, and, compared with the strong CQS and VM-26 cleavages, can be considered only moderate at best. Although faint XK469 cleavages often occur at sites of strong CQS and VM-26 cleavage (71% of the XK469 cleavages match CQS cleavages), the relative strength of the cleavages are very different. No XK469 cleavages were detected in the region below the DNA strand break at C413, whereas CQS and VM-26 both have uniquely strong cleavage sites in this region. One of the strongest XK469 cleavage sites occurs at G402, where CQS and VM-26 cleavages are not detectable. Other significant XK469 cleavage sites occur at T358 (just below the strong CQS, VM-26 cleavage sites at A357) and at C362 (just below the strong CQS, VM-26 cleavage site at G361). Both of the latter two sites are unique to XK469. Another strong XK469 site, at T310, corresponds to a CQS cleavage site of comparable strength.

Studies with eukaryotic topoisomerase II have indicated that DNA sequence is the primary determinant of topoisomerase II cleavage specificity and strength (Spitzner and Muller, 1988). For DNA cleavages stimulated by topoisomerase II poisons, the strongest base preferences tend to be the -1 and $+1$ positions relative to the topoisomerase cleavage sites (Palumbo et al., 2002). Studies of drug-stimulated topoisomerase II mediated DNA cleavage have shown that VM-26 stimulated cleavages are favored by a C at the -1 position

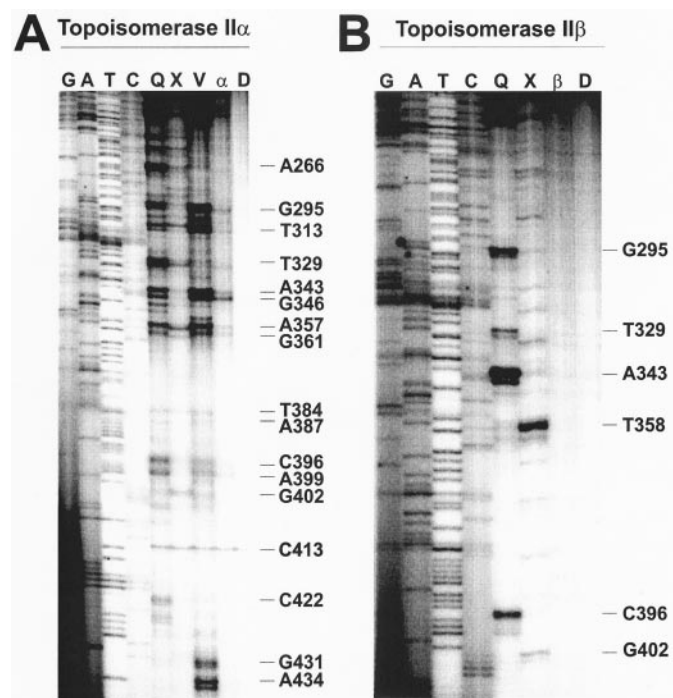


Fig. 2. Mapping of topoisomerase II α - and II β -mediated DNA cleavage sites. **A**, topoisomerase II α -mediated DNA cleavage was stimulated by CQS, XK469, and VM-26. The gel was run for 2 h to obtain optimum resolution of the low molecular weight DNA fragments. A 6-h electrophoresis (not shown) was used to obtain optimum resolution of high molecular weight DNA fragments. Sequencing ladders: G, guanine; A, adenine; T, thymine; C, cytosine; D, substrate DNA only; α , topoisomerase II α with substrate DNA; Q, CQS (2 mM); X, XK469 (2 mM); V, VM-26 (100 μ M). The sequencing ladders were done on the opposite strand from that used for mapping topoisomerase II-mediated cleavage sites (see Fig. 3), so it is necessary to translate the sequence to the opposite strand to identify the topoisomerase II mediated cleavages. Cleavage sites are identified by the base at the $+1$ position (3'-side of the topoisomerase II cleavage) and the number of the base in the cloned fragment. **B**, topoisomerase II β -mediated DNA cleavages stimulated by CQS and XK469. The same substrate DNA was used for mapping both topoisomerase II β and topoisomerase II α cleavages. Again, both short (2 h, shown) and long (6 h, not shown) electrophoresis runs were made to optimize resolution in different parts of the sequence. β , topoisomerase II β with substrate DNA; other abbreviations are the same as in Fig. 2A. The DNA strand break at C413 occurs normally in a fraction of the DNA substrate molecules.

relative to the site of DNA cleavage (Pommier et al., 1991; Capranico et al., 1993; Capranico et al., 1997). Our data are consistent with this. Of the 25 strong or moderate VM-26 stimulated topoisomerase II α cleavages, 12 have a C at the -1 position, whereas only 5.2 would be expected for random occurrence based on the frequency of C in the substrate DNA. This difference is very significant ($P = 0.002$). Similarly, of 26 strong or moderate CQS-stimulated topoisomerase II α cleavage sites, 12 have C at the -1 position where 5.5 would be expected ($P = 0.006$). Of 22 XK469 stimulated topoisomerase II α cleavage sites (most weak), 11 have C at the -1 position (4.6 expected by random occurrence, $P = 0.002$). Only two of the XK469 stimulated topoisomerase II α sites have C at the +1 position, which is not statistically different from the value of 4.6 predicted ($P = 0.29$). These results indicate that XK469, like CQS and VM-26, tends to stimulate topoisomerase II α cleavage at sites with a C at the -1 position. However, the cleavage intensity pattern for XK469-stimulated topoisomerase II α cleavages is distinctively different from those of CQS and VM-26. In two instances, relatively strong XK469-stimulated topoisomerase II α cleavages occur just one base to the 3' side of strong VM-26 and CQS cleavages (at T358 and C362, Figs. 2 and 3). Although this is a striking visual feature of the sequencing ladders in Fig. 2A, the significance is not clear. XK469-stimulated topoisomerase II β cleavages correspond to the XK469-stimulated topoisomerase II α cleavages in both cases, and XK469-stimulated topoisomerase II β cleavages also occur one base pair to the 3' side of strong VM-26 and CQS topoisomerase II α cleavages at T296 and C314. However, XK469 stimulated topoisomerase II α and II β cleavages match exactly strong VM-26 and CQS cleavages at A248 and A343 and are offset by three base pairs at G402. Because XK469-stimulated topoisomerase II α and II β cleavages often occur independently of one another and nowhere near strong VM-26 or CQS sites (see Fig. 3, row 241), a much larger data set would have to be analyzed to determine whether these one-base pair offsets relative to strong VM-26- and CQS-stimulated topoisomerase II α cleavages are significant.

Topoisomerase II β . XK469 was compared with CQS for stimulation of topoisomerase II β -mediated DNA cleavage. As shown in Fig. 2, the XK469 pattern was again distinctive. CQS stimulated relatively few topoisomerase II β -mediated DNA cleavages, but a number of these were strong, such as the cleavages at G295, T329, A343, G346, and C396. XK469 caused a single very strong topoisomerase II β cleavage at T358 and numerous moderate and weak cleavages.

Many of the XK469-stimulated topoisomerase II β DNA cleavages were also distinctly different from those stimulated by CQS. Whereas 16 of 22 (73%) of the XK469-stimulated topoisomerase II α cleavages corresponded to CQS-stimulated topoisomerase II α cleavage sites, only 3 of 20 (15%) of the XK469-stimulated topoisomerase II β cleavages matched the CQS-stimulated topoisomerase II β cleavages. In addition to the overall differences in topoisomerase II β cleavage sites, the cleavage intensities were also very different for CQS and XK469. XK469 stimulated one very strong topoisomerase II β cleavage and a number of moderate cleavages on the substrate DNA used in this study but caused only weak to moderate cleavages with topoisomerase II α . This is consistent with the previously reported specificity of XK469 for topoisomerase II β (Gao et al., 1999).

Although CQS stimulates DNA cleavage at many of the same sites with topoisomerase II α and topoisomerase II β , the relative intensity patterns are very different. There are strong CQS stimulated cleavages at G295, T329, A343, and C396 for both isozymes, but the strong CQS-stimulated topoisomerase II α cleavages at G235, G238, A248, A266, T310, and A357 are either missing or greatly reduced with the β isozyme. The strongest XK469-mediated topoisomerase II β cleavage, at T358, is also one of the stronger XK469 cleavages for topoisomerase II α (the somewhat stronger CQS and VM-26 cleavages at A357 are indicated for topoisomerase II α in Fig. 2A, and the XK469-topoisomerase II α cleavage at T358 can be seen between them, one base lower on the gel). Likewise, the XK469 cleavage at G402 is apparent with both isozymes. However, most of the numerous XK469 cleavages seen with topoisomerase II β do not match cleavages of similar intensity in the topoisomerase II α experiment. Of 22 XK469 topoisomerase II α cleavages and 20 XK469 topoisomerase II β cleavages, only five are common to both isozymes.

Discussion

Most topoisomerase poisoning assays use the detergent SDS to inactivate topoisomerases trapped in drug-stabilized topoisomerase-DNA cleavage complexes and convert them to irreversible protein-DNA crosslinks. However, CQS-stabilized topoisomerase II α and II β -DNA cleavage complexes are not efficiently detected when SDS is used, and it is necessary to use chaotropic protein denaturants instead (Gao et al., 2000). Aside from this unusual feature, shared only with ICRF-193 at this time (Huang et al., 2001), CQS seems to be a typical topoisomerase II poison, resembling VM-26 in its DNA sequence specificity and lack of pronounced topoisomerase II isozyme preference. In addition to sharing many sites, the relative strengths of CQS and VM-26 stimulated topoisomerase II α cleavages tend to be comparable, resulting in overall patterns that are quite similar, although each drug does stimulate a few significant cleavages at unique sites not shared by the other. Many of the VM-26 and CQS stimulated cleavages occur at sites normally cleaved by topoisomerase II α in the absence of drugs.

The relation of CQS-stimulated topoisomerase II α cleavage to VM-26 stimulated cleavage is very similar to that reported for VM-26 and mitoxantrone (Capranico et al., 1993). In general, drugs with similar shapes, and with shared pharmacophores and electronic structure, tend to have similar topoisomerase II-mediated DNA cleavage patterns, whereas topoisomerase II poisons of different chemical classes cause very different DNA cleavage patterns and/or cleavage intensity patterns (Capranico et al., 1993, 1994a, 1998; Guano et al., 1999). However, there are exceptions to this rule. Some drugs with very similar structures cause different patterns of topoisomerase-mediated DNA cleavage, and some drugs of very different structure may have similar patterns (Capranico et al., 1997). VM-26 and mitoxantrone represent an example of structurally dissimilar drugs with similar patterns of topoisomerase-mediated DNA cleavage. Both drugs tend to stimulate topoisomerase II cleavages at the same sites, often sites cleaved by topoisomerase II in the absence of drugs, yet they have no common pharmacophore, and mitoxantrone is a DNA intercalator, whereas VM-26 is not (Capranico et al., 1993). CQS represents another case of a drug with

no apparent pharmacophore in common with VM-26, yet mimics its topoisomerase II α cleavage intensity pattern.

Many of the sites of CQS and VM-26 topoisomerase II α cleavage also correspond to sites of ICRF-193-stimulated topoisomerase II β DNA cleavage (Huang et al., 2001). Among these are T203, G207, G235, G295, G298, T304, T313, A343, G346, A357, G361, C396, and A399. In addition, the patterns of ICRF-193- and CQS-stimulated topoisomerase II β cleavages are very similar, including not only the sites of cleavage, but the relative strengths of the cleavages. As noted under *Results*, the CQS cleavage intensity pattern on topoisomerase II β is very different from the CQS cleavage intensity pattern on topoisomerase II α . Several topoisomerase II poisons such as VM-26 (Drake et al., 1989; Cornarotti et al., 1996), 4'-(9-acridinylamino)methanesulfon-*m*-anisidide (amsacrine) (Marsh et al., 1996), 4-demethoxy-3'-deamino-3'-hydroxy-4'-*epi*-doxorubicin I (Cornarotti et al., 1996), and other anthracycline analogs (Guano et al., 1999) show topoisomerase II β cleavage intensity patterns that strongly resemble their topoisomerase II α cleavage intensity patterns. This has been interpreted as evidence that the binding of these drugs is very similar in the enzyme-DNA-drug ternary complex of both isozymes, and it has been suggested that the interactions of these drugs with the topoisomerase II isozymes may involve mainly the highly conserved active site residues of the two isozymes (Cornarotti et al., 1996; Palumbo et al., 2002). Based on this model, drugs that show topoisomerase II β cleavage intensity patterns that differ markedly from their topoisomerase II α cleavage intensity patterns would interact significantly with nonconserved active site features in topoisomerase II β , resulting in an altered cleavage intensity pattern. The resemblance of the CQS topoisomerase II β cleavage intensity pattern to the ICRF-193 cleavage intensity pattern suggests that the two drugs share some similarity in their interaction with topoisomerase II β despite their very different structures. Flavonoid topoisomerase II poisons have also been found to have very different cleavage patterns on topoisomerase II α and II β (Austin et al., 1995).

The pattern of XK469-stimulated topoisomerase II α cleavages differs mainly in the relative strength of the cleavages. The XK469 topoisomerase II α -mediated cleavages are generally very weak compared with those of CQS and VM-26. The strongest XK469 cleavages (which are moderate to weak compared with the strong CQS and VM-26 cleavages) do not correspond with the positions of the strongest CQS and VM-26 cleavages but often occur at positions of very weak CQS and/or VM-26 cleavage. The generally weak XK469-stimulated topoisomerase II α cleavages are consistent with our previous finding of strong β -isozyme selectivity for XK469 (Gao et al., 1999). ICRF-193 is structurally unrelated to the quinoxalines but resembles XK469 in its preference for the β -isozyme of human topoisomerase II (Gao et al., 1999), although the preference is not as pronounced as that of XK469. XK469, in contrast to CQS, shows differences not only in average strength of cleavage between the two isozymes, but also many cases of differences in cleavage site specificity. The XK469 topoisomerase II α and topoisomerase II β cleavage intensity patterns are quite distinct, which underscores the idea that XK469's interaction with the topoisomerase II β active site is very different from its interaction with the topoisomerase II α active site. The model discussed above would predict that XK469 interacts strongly with the

topoisomerase II β active site features that are not found in the topoisomerase II α active site. The fact that the XK469 topoisomerase II α cleavage pattern is distinctively different from those of VM-26 and CQS and that its topoisomerase II β cleavage pattern is very different from those of CQS and ICRF-193 suggests that XK469 may have unique interactions in the active site of each topoisomerase II isozyme that are not shared by the other drugs in this study.

The fact that both XK469 and CQS are topoisomerase II poisons suggests that the overall quinoxaline structure is favorable for stabilization of topoisomerase II-DNA cleavage complexes. For the quinoxalines, the topoisomerase II isozymes seem to play a major role in DNA cleavage site selectivity. However, the two drugs differ significantly in structural detail and chemical and electronic properties. The potential hydrogen bonding properties of XK469 and CQS are also clearly very different, not only in the modifying group on the smaller aromatic ring ($-\text{NH}_2$ for CQS versus $-\text{O}-\text{CH}(\text{CH}_3)-\text{CO}_2\text{H}$ for XK469) but also on the linking group between the two aromatic ring systems ($-\text{NH}-\text{SO}_2-$ for CQS versus $-\text{O}-$ for XK469). The differences in structure and electronic properties may account not only for the marked differences in topoisomerase II-mediated DNA cleavage site selectivity for these drugs but also for the differences in isozyme preference and trapping of cleavage complexes by different protein denaturants. Quinoxalines seem to hold unusual promise as topoisomerase II poisons with unique properties.

Acknowledgments

We thank Dr. Caroline Austin (University of Newcastle, UK) for purified human topoisomerase II β and Stacy Hoshaw-Woodard (OSU Center for Biostatistics) for assistance with the statistical analysis of data.

References

- Austin CA, Marsh KL, Wasserman RA, Willmore E, Sayer PJ, Wang JC, and Fisher LM (1995) Expression, domain structure and enzymatic properties of an active recombinant human DNA topoisomerase II β . *J Biol Chem* **270**:15739–15746.
- Borgnetto ME, Tinelli S, Carminati L, and Capranico G (1999) Genomic sites of topoisomerase II activity determined by comparing DNA breakage enhanced by three distinct poisons. *J Mol Biol* **285**:545–554.
- Capranico G, Binaschi M, Borgnetto ME, Zunino F, and Palumbo M (1997) A protein-mediated mechanism for the DNA sequence-specific action of topoisomerase II poisons. *Trends Pharmacol Sci* **18**:323–329.
- Capranico G, De Isabella P, Tinelli S, Bigioni M, and Zunino F (1993) Similar sequence specificity of mitoxantrone and VM-26 stimulation of in vitro DNA cleavage by mammalian DNA topoisomerase II. *Biochemistry* **32**:3038–3046.
- Capranico G, Guano F, Moro S, Zagotto G, Sissi C, Gatto B, Zunino F, Menta E, and Palumbo M (1998) Mapping drug interactions at the covalent topoisomerase II-DNA complex by bisantrene/amsacrine congeners. *J Biol Chem* **273**:12732–12739.
- Capranico G, Palumbo M, Tinelli S, Mabilia M, Pozzan A, and Zunino F (1994a) Conformational drug determinants of the sequence specificity of drug-stimulated topoisomerase II DNA cleavage. *J Mol Biol* **235**:1218–1230.
- Capranico G, Palumbo M, Tinelli S, and Zunino F (1994b) Unique sequence specificity of topoisomerase II DNA cleavage stimulation and DNA binding mode of streptonigrin. *J Biol Chem* **269**:25004–25009.
- Capranico G, Zunino F, Kohn KW, and Pommier Y (1990) Sequence-selective topoisomerase II inhibition by anthracycline derivatives in SV40 DNA: relationship with DNA binding affinity and cytotoxicity. *Biochemistry* **29**:562–569.
- Catapano CV, Carbone GMR, Pisani F, Qiu J, and Fernandes DJ (1997) Arrest of replication fork progression at sites of topoisomerase II-mediated DNA cleavage in human leukemia CEM cells incubated with VM-26. *Biochemistry* **36**:5739–5748.
- Chen AY and Liu LF (1994) DNA topoisomerases: essential enzymes and lethal targets. *Annu Rev Pharmacol Toxicol* **34**:191–218.
- Corbett TH, LoRusso P, Demchick L, Simpson C, Pugh S, White K, Kushner J, Polin L, Meyer J, Czarnecki J, et al. (1998) Preclinical antitumor efficacy of analogs of XK469: sodium-(2-[4-(7-chloro-2-quinoxalinyloxy)phenoxy]propionate). *Investig New Drugs* **16**:129–139.
- Cornarotti M, Tinelli S, Willmore E, Zunino F, Fisher LM, Austin CA, and Capranico G (1996) Drug sensitivity and sequence specificity of human recombinant DNA topoisomerases II α (P170) and II β (P180). *Mol Pharmacol* **50**:1463–1471.
- Drake FH, Hofmann GA, Bartus HF, Mattern MR, Crooke ST, and Mirabelli CK (1989) Biochemical and pharmacological properties of P170 and P180 forms of topoisomerase II. *Biochemistry* **28**:8154–8160.
- Gao H, Yamasaki EF, Chan KK, Shen LL, and Snapka RM (2000) Chloroquinoxaline

- sulfonamide (NSC 339004) is a topoisomerase II α /beta poison. *Cancer Res* **60**:5937–5940.
- Gao HL, Huang KC, Yamasaki EF, Chan KK, Chohan L, and Snapka RM (1999) XK469, a selective topoisomerase II β poison. *Proc Natl Acad Sci USA* **96**:12168–12173.
- Guano F, Pourquier P, Tinelli S, Binaschi M, Bigioni M, Animati F, Manzini S, Zunino F, Kohlhaagen G, Pommier Y, et al. (1999) Topoisomerase poisoning activity of novel disaccharide anthracyclines. *Mol Pharmacol* **56**:77–84.
- Haldane A, Finlay GJ, and Baguley BC (1993) A comparison of the effects of aphidicolin and other inhibitors on topoisomerase II-directed cytotoxic drugs. *Oncol Res* **5**:133–138.
- Hsiang Y-H, Lihou MG, and Liu LF (1989) Arrest of replication forks by drug-stabilized topoisomerase I-DNA cleavable complexes as a mechanism of cell killing by camptothecin. *Cancer Res* **49**:5077–5082.
- Huang KC, Gao H, Yamasaki EF, Grabowski DR, Liu S, Shen LL, Chan KK, Ganapathi R, and Snapka RM (2001) Topoisomerase II poisoning by ICRF-193. *J Biol Chem* **276**:44488–44494.
- Kingma PS, Greider CA, and Osheroff N (1997) Spontaneous DNA lesions poison human topoisomerase II α and stimulate cleavage proximal to leukemic 11q23 chromosomal breakpoints. *Biochemistry* **36**:5934–5939.
- Marsh KL, Willmore E, Tinelli S, Cornarotti M, Meczes EL, Capranico G, Fisher LM, and Austin CA (1996) Amsacrine-promoted DNA cleavage site determinants for the two human DNA topoisomerase II isoforms alpha and beta. *Biochem Pharmacol* **52**:1675–1685.
- Palumbo M, Gatto B, Moro S, Sissi C, and Zagotto G (2002) Sequence-specific interactions of drugs interfering with the topoisomerase-DNA cleavage complex. *Biochim Biophys Acta* **1587**:145–154.
- Pommier Y, Capranico G, Orr A, and Kohn KW (1991) Local base sequence preferences for DNA cleavage by mammalian topoisomerase II in the presence of amsacrine or teniposide. *Nucleic Acids Res* **19**:5973–5980.
- Pommier Y, Orr A, Kohn KW, and Riou J-F (1992) Differential effects of amsacrine and epipodophyllotoxins on topoisomerase II cleavage in the human C-Myc protooncogene. *Cancer Res* **52**:3125–3130.
- Ryan AJ, Squires S, Strutt HL, and Johnson RT (1991) Camptothecin cytotoxicity in mammalian cells is associated with the induction of persistent double strand breaks in replicating DNA. *Nucleic Acids Res* **19**:3295–3300.
- Shin C-G and Snapka RM (1990) Exposure to camptothecin breaks leading and lagging strand simian virus 40 DNA replication forks. *Biochem Biophys Res Commun* **168**:135–140.
- Shoemaker RH (1986) New approaches to anticancer drug screening: the human tumor colony-forming assay. *Cancer Treat Rep* **70**:9–12.
- Snapka RM (1986) Topoisomerase inhibitors can selectively interfere with different stages of simian virus 40 DNA replication. *Mol Cell Biol* **6**:4221–4227.
- Snapka RM, Gao H, Grabowski DR, Brill D, Chan KK, Li L, Li GC, and Ganapathi R (2001) Cytotoxic mechanism of XK469: resistance of topoisomerase II β knock-out cells and inhibition of topoisomerase I. *Biochem Biophys Res Commun* **280**:1155–1160.
- Spitzner JR, Chung IK, and Muller MT (1990) Eukaryotic topoisomerase II preferentially cleaves alternating purine-pyrimidine repeats. *Nucleic Acids Res* **18**:1–11.
- Spitzner JR and Muller MT (1988) A consensus sequence for cleavage by vertebrate DNA topoisomerase II. *Nucleic Acids Res* **16**:5533–5556.
- Tewey KM, Chen GL, Nelson EM, and Liu LF (1984) Intercalative antitumor drugs interfere with the breakage-reunion reaction of mammalian DNA topoisomerase II. *J Biol Chem* **259**:9182–9187.
- Valeriate F, Corbett T, Edelstein M, and Baker L (1996) New in vitro screening model for the discovery of antileukemic anticancer agents. *Clin Sci Rev* **14**:124–141.

Address correspondence to: Dr. Robert M. Snapka, The Ohio State University, Department of Radiology, 103 Wiseman Hall, 400 West 12th Avenue, Columbus, OH 43210. E-mail: snapka.1@osu.edu
