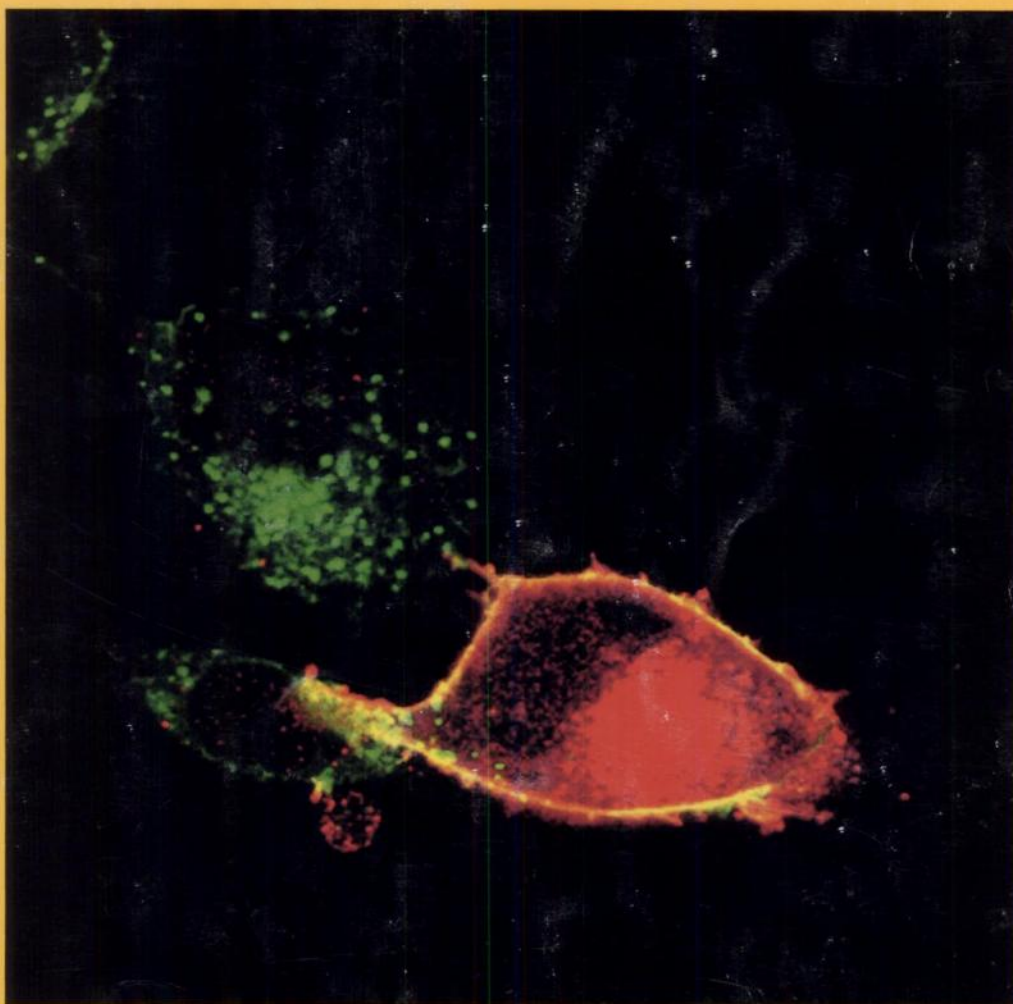


DBB

VOLUME 50
NUMBER 3
SEPTEMBER 1996

MOLECULAR PHARMACOLOGY

FOUNDED 1965 BY AVRAM GOLDSTEIN

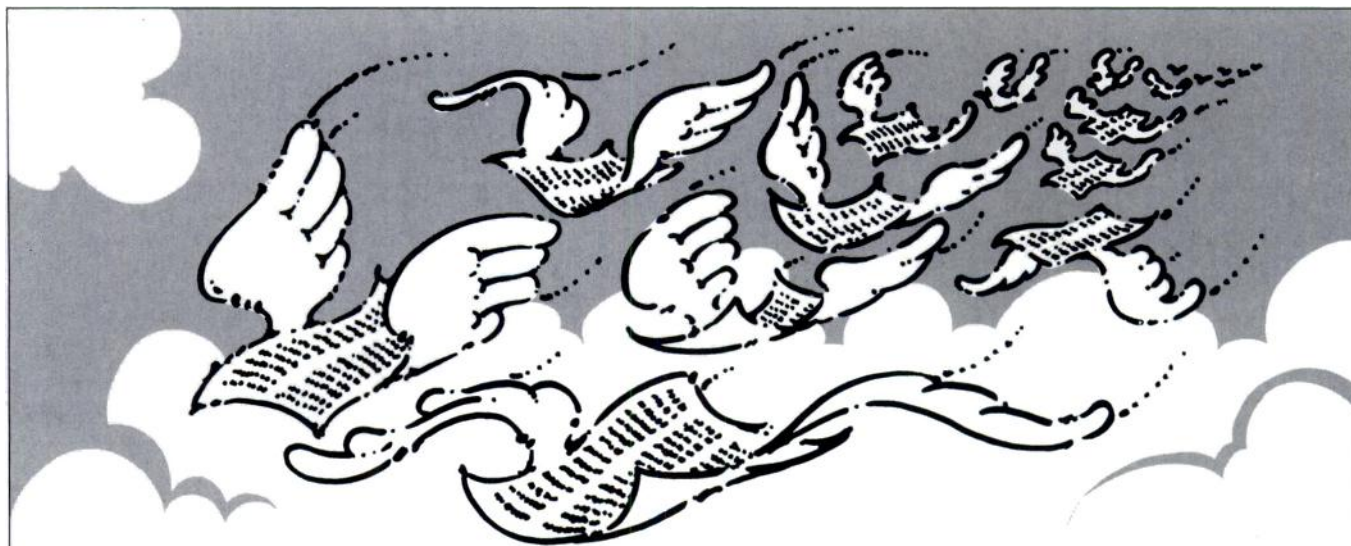


A PUBLICATION OF THE AMERICAN SOCIETY FOR
PHARMACOLOGY AND EXPERIMENTAL THERAPEUTICS

Published by Williams & Wilkins

Previous Editors

- 1965** Avram Goldstein, *Editor*. Stanford University.
- 1968** Paul Talalay, *Editor*; Donald S. Coffey, *Associate Editor*. Johns Hopkins University.
- 1971** Steven E. Mayer, *Editor*; Palmer W. Taylor, *Associate Editor*. University of California at San Diego.
- 1975** George I. Drummond, *Editor*; H. Joseph Goren, *Associate Editor*. University of Calgary.
- 1978** Norman Kirschner, *Editor*; Theodore A. Slotkin, *Associate Editor*. Duke University.
- 1983** Joel G. Hardman, *Editor*; Lee Limbird, F. Peter Guengerich, *Associate Editors*. Vanderbilt University.
- 1986** William A. Catterall, *Editor*; Joseph A. Beavo, Mont R. Juchau, Neil M. Nathanson, Daniel R. Storm, Frank F. Vincenzi, *Associate Editors*. University of Washington, Seattle.
- 1990** T. Kendall Harden, *Editor*; Raymond J. Dingleline, R. L. Juliano, James W. Putney, Jr., Kenneth D. Tew, Ronald G. Thurman, *Associate Editors*. University of North Carolina at Chapel Hill.



Williams & Wilkins Quick Copies. Tell us today. Read it tomorrow.

You can get copies of any article published in any Williams & Wilkins journal. It's fast – because we're the primary source, we can fax an article to you within **24 hours** of when we receive your request. It costs less – there are **no copyright fees** and the **cost of faxing is included in the price**. It's affordable – look at the table to the right.

RATES, PER ARTICLE

1–5 pages	\$12
6–10 pages	\$15
11–15 pages	\$18
16–20 pages	\$21
21–25 pages	\$24
26+ pages	\$30

Additional charges
for overnight delivery

Fax, phone, or mail your order to:

**Williams & Wilkins
Quick Copies**
351 W. Camden Street
Baltimore, MD 21201-2436
Call 1-800-354-9685 (toll free)
Fax 1-410-528-4458



Williams & Wilkins
A WAVERLY COMPANY

DDSD 56189

INFORMATION FOR SUBSCRIBERS

MOLECULAR PHARMACOLOGY (MOL/ISSN 0026-895X) is an official publication of The American Society for Pharmacology and Experimental Therapeutics and is published by Williams & Wilkins, 351 West Camden Street, Baltimore, MD 21201-2436. Periodicals Postage paid at Baltimore, MD and at additional mailing offices. POSTMASTER: Send address changes to MOLECULAR PHARMACOLOGY, 351 West Camden Street, Baltimore, MD 21201-2436.

Frequency: *Monthly*: Two volumes a year beginning in January and July. Printed on acid-free paper.

Correspondence concerning business matters should be addressed to: Customer Service, Subscriptions, Williams & Wilkins, 351 West Camden Street, Baltimore, MD 21201-2436. Telephone 1-800-638-6423 from anywhere in the U.S. and Canada. From other countries, call 410-528-8555. Fax: 410-528-8596.

Correspondence regarding editorial matters should be addressed to the Editor: Dr. Raymond J. Dingledine, Editor, *Molecular Pharmacology*, Emory University School of Medicine, 1510 Clifton Road, Room 5001, Atlanta, Georgia 30322-3090, U.S.A. Telephone: 404-727-0362, Fax: 404-727-4242.

For information on Society membership, contact: The American Society for Pharmacology and Experimental Therapeutics, 9650 Rockville Pike, Bethesda, MD 20814. Telephone: 301-530-7060. Fax: 301-530-7061.

Instructions to Authors appears in every issue.

Annual Subscription Rates: U.S.: *Personal* \$105; *Institutional* \$230; *Single copy* \$19. **Outside the U.S., except Japan:** *Personal* \$135; *Institutional* \$260; *Single copy* \$23.

Institutional (multiple reader) rate applies to libraries, schools, hospitals, clinics, group practices, and federal, commercial and private institutions and organizations.

For Japanese rates, please contact: Igaku-Shoin MYW Ltd., 3-23-14 Hongo, Bunkyo-Ku, Tokyo 113, JAPAN. Telephone: 03-5689-5400 or 5401. Fax: 03-5689-5402.

PRICES ARE SUBJECT TO CHANGE.

The GST number for Canadian subscribers is 123394371. Country of origin USA. C.P.C. Int'l Publication Mail #0059870.

New subscriptions received before May 1st of each year will begin with the first issue of the year. Subscriptions received between May 1st and October 31st will start with the midyear issue (July). Subscriptions received after October 31st will start with the first issue of the following year. Subscriptions may start with any current volume's issue upon request.

Renewals should be done *promptly* to avoid a break in journal delivery. The publisher cannot guarantee to supply back issues on late renewals.

Change of address: The publisher must be notified 60 days in advance. Journals undeliverable because of incorrect address will be destroyed. Duplicate copies may be obtained, if available, from the publisher at the regular price of a single issue. Send address changes to MOLECULAR PHARMACOLOGY, 351 West Camden Street, Baltimore, MD 21201-2436. **If a member**, please contact the Society with your change.

Reprints of individual articles are available only from the authors.

Reprints in large quantities for commercial or academic use may be purchased from the publisher. For information and prices call 410-528-4292.

Microfilm and Microfiche: Prices are available upon request. Microfilm editions may be ordered from Williams & Wilkins.

The Journal subscription list is available for rental on a controlled basis from Williams & Wilkins. All promotional literature must be approved in advance.

Disclaimer: The statements and opinions contained in the articles of MOLECULAR PHARMACOLOGY are solely those of the individual authors and contributors and not of The American Society for Pharmacology and Experimental Therapeutics or Williams & Wilkins. The appearance of advertisements in the Journal is not a warranty, endorsement or approval of the products or safety. The American Society for Pharmacology and Experimental Therapeutics and the publisher disclaim responsibility for any injury to persons or property resulting from any ideas or products referred to in the articles or advertisements.

Volume indexes appear in the June and December issues.

Indexing/Abstracting Services: The Journal is currently included by the following services in print and/or electronic format: *Index Medicus*, *Current Contents (Life Sciences)*, *Excerpta Medica*, *Current Awareness in Biological Sciences*, and *Reference Update/Research Information Systems*.

Copyright Information: MOLECULAR PHARMACOLOGY is copyrighted by the American Society for Pharmacology and Experimental Therapeutics. No portion(s) of the work(s) may be reproduced without written consent from Williams & Wilkins. Permission to reproduce copies of articles for non-commercial use may be obtained from the Copyright Clearance Center, 222 Rosewood Drive, Danvers, MA 01923, (508) 750-8400, with a fee of \$3.00 per copy.

Copyright © 1996 by The American Society for Pharmacology and Experimental Therapeutics.