

MOL19620

Positive Inter-Regulation between β -Catenin/T Cell Factor-4 Signaling and Endothelin-1 Signaling Potentiates Proliferation and Survival of Prostate Cancer Cells

Ping Sun, Hui Xiong, Tae Hoon Kim, Bing Ren, and Zhuohua Zhang

Burnham Institute for Medical Research, La Jolla, California (P.S., H.X., Z.Z.); and Ludwig Institute for Cancer Research, and Department of Cellular and Molecular Medicine, UCSD School of Medicine, La Jolla, California (T.H.K., B.R.).

MOL19620

Running Title: β -Catenin and Endothelin-1 in Prostate Cancer

Address Correspondence to: Zhuohua Zhang, Burnham Institute for Medical Research, 10901 North Torrey Pines Road, La Jolla, CA 92037. Phone: (858) 713-6286; Fax: (858) 713-6273; Email: benzz@burnham.org.

Document Statistics:

Number of Text Pages: 36

Number of Figures: 7

Number of Tables: 1

Number of References: 37

Words in the Abstract: 237

Words in the Introduction: 681

Words in the Discussion: 704

Abbreviations: APC, adenomatous polyposis coli; GSK-3 β , glucogen synthase kinase-3 β ; β -Trcp, β -transducin repeat-containing protein; PrEC, prostate epithelial cell; CRT, β -catenin/Tcf-related transcription; PI3K, phosphatidylinositol 3-kinase; GAPDH, glyceraldehyde-3-phosphate dehydrogenase; ELISA, enzyme-linked immunosorbent assay; ChIP, chromatin immunoprecipitation; TIS, transcription initiation site; NEP, neutral endopeptidase 24.11.

MOL19620

Abstract

Both malignant and normal prostate epithelial cells produce endothelin-1 (ET-1), a critical factor in prostate cancer (CaP) progression. β -Catenin (β -cat), a key component of the Wnt signaling pathway, is also implicated in CaP progression via β -cat/T cell factor (Tcf) signaling. We recently demonstrated that β -cat/Tcf-4 regulates transcription of *ET-1* in colon cancer cells. In the present study, we found that Tcf-4 specifically bound to and activated the *ET-1* promoter *in vivo* in human CaP cells and mouse prostate tissue. Expression of ET-1 in DU145 CaP cells was down-regulated by knocking down endogenous β -cat or Tcf-4. Ectopic activation of β -cat/Tcf-4 signaling significantly elevated expression of ET-1 in LNCaP cells. In addition, genetic ablation of β -cat significantly inhibited transcription of *ET-1* in primary prostate epithelial cells. Meanwhile, exogenous ET-1 enhanced β -cat/Tcf signaling and ET-1 expression in DU145 cells, which was blocked by both selective phosphatidylinositol 3-kinase (PI3K) inhibitor LY294002 and endothelin-A receptor antagonist BQ123. Furthermore, knockdown of either β -cat or Tcf-4 substantially reduced cell proliferation and potentiated paclitaxel-induced apoptosis in DU145 cells, which to a great extent were rescued by treatment with exogenous ET-1. Together, our results suggest that β -cat/Tcf-4 signaling transcriptionally activates ET-1 in CaP cells; meanwhile, ET-1 enhances β -cat/Tcf-4 signaling and in turn further increases ET-1 expression in a PI3K-dependent manner. The positive inter-regulation between β -cat/Tcf-4 signaling and ET-1 signaling potentiates proliferation and survival of CaP cells, thereby representing a novel mechanism that contributes to CaP progression.

MOL19620

Introduction

Prostate cancer (CaP) is the most commonly diagnosed malignancy and the second leading cause of cancer death in American men. Although our ability to detect early stage CaP has increased, predictive diagnosis and effective tumor therapy remain limited. Advanced CaP brought to remission with androgen ablative therapy often relapses, leading to hormone-refractory tumors for which only experimental treatments exist (Culig et al., 1998). Hence, understanding the molecular basis of CaP progression is paramount for broadening current diagnostic and therapeutic modalities.

β -Catenin (β -cat), originally identified as an essential regulator for E-cadherin-mediated cell-cell interaction, is also a key component of the Wnt signaling pathway (Chesire and Isaacs, 2003; Zhang et al., 1998). Wnt signals are transduced via specific cell surface receptors to activate a series of biochemical reactions involving a large protein complex consisting of β -cat, adenomatous polyposis coli (APC), glucocorticoid synthase kinase-3 β (GSK-3 β), β -transducin repeat-containing protein (β -Tcrp) and axin, resulting in stabilization of β -cat protein and an increase in the soluble pool of β -cat (Nusse, 1999; Wodarz and Nusse, 1998). The soluble β -cat interacts with the T cell factor (Tcf) family of transcription factors and transactivates a number of downstream target genes, leading to increased proliferation and decreased differentiation of epithelial cells (Chesire et al., 2000; de la Taille et al., 2003). Pathological mutation of β -cat, APC, β -Tcrp, axin and Tcf all lead to activation of β -cat/Tcf signaling and are found in a variety of cancers including CaP (Barker and Clevers, 2000). In all, 5-7% of CaP carry mutations in β -cat (Chesire et al., 2000). One study showed that 32% of CaP samples carried mutations in β -cat signaling pathway components including β -cat, APC or β -Tcrp (Gerstein et al., 2002). In cases of advanced CaP, nuclear localization of β -cat is significantly increased despite the absence of

MOL19620

detectable β -cat mutations (Chesire et al., 2002a). A recent study reported that high levels of expression of Wnt-1 and cytoplasmic/nuclear β -cat were observed *in situ* in 77% of lymph node metastases and 85% of bone metastases of CaP (Chen et al., 2004). In addition, abnormal cytoplasmic/nuclear β -cat expression is associated with high Gleason scores in CaP patients (de la Taille et al., 2003; Chen et al., 2004). These findings indicate that abnormal activation of β -cat is associated with CaP progression, particularly, the development of advanced, hormone-refractory CaP.

Endothelin-1 (ET-1) is a potent vasoconstrictor initially isolated from endothelial cells (Nelson et al., 2003a). Both malignant and normal prostate epithelial cells (PrEC) produce ET-1 (Pirtskhalaishvili and Nelson, 2000; Nelson et al., 1996). Although its physiological function in the normal prostate remains unclear, ET-1 has been shown to promote CaP cell proliferation *in vitro* and CaP bone metastasis *in vivo* through the endothelin-A (ET-A) receptor (Nelson et al., 1996). Compelling evidence suggests that ET-1 plays an important role in CaP progression. ET-1 levels are evidently higher in advanced, metastatic CaP specimens than in primary lesions (Nelson et al., 1996). Expression of ET-1 in CaP cells is markedly up-regulated by factors involved in cancer progression (Granchi et al., 2001). Furthermore, plasma ET-1 levels are abnormally elevated in 58% of men with advanced, hormone-refractory CaP (Nelson et al., 2001). The importance of ET-1 in CaP progression is further emphasized by results of clinical trials, which indicate that a selective ET-A receptor antagonist is beneficial in controlling progression of hormone-refractory CaP and in suppressing CaP-induced bone remodeling (Fisher, 2002; Nelson et al., 2003b).

Multiple observations suggest that β -cat/Tcf-related transcription (CRT) is correlated with expression of ET-1 in CaP cells. For instance, activation of androgen/androgen receptor (AR)

MOL19620

signaling down-regulates both CRT activity and expression of ET-1 in CaP cells (Granchi et al., 2001; Mulholland et al., 2003; Chesire et al., 2002b; Grant et al., 1997). We have recently demonstrated that β -cat/Tcf-4 regulates *ET-1* transcription in colon cancer cells (Kim et al., 2005). In this study, we show that β -cat/Tcf-4 transcriptionally activates ET-1 expression in both malignant and normal PrECs; meanwhile, ET-1 stimulates β -cat/Tcf-4 signaling via a phosphatidylinositol 3-kinase (PI3K)-dependent pathway. Thus, β -cat/Tcf-4 signaling and ET-1 signaling forms a positive feedback loop to enhance both signaling pathways and potentiate proliferation and survival of CaP cells.

MOL19620

Materials and Methods

Plasmids and Reagents. The TOPflash and FOPflash plasmids and plasmids encoding human β -cat or Tcf-4 were kindly provided by Dr. Hans Clevers (Netherlands Institute for Developmental Biology, The Netherlands). To generate retroviral expression of β -cat, human β -cat cDNA was subcloned into retroviral vector pLXSHD (Miller and Rosman, 1989). Human *ET-1* promoter reporter (ETP) and its mutant control (muETP) were generated as previously described (Kim et al., 2005). To construct retroviral-RNA interference plasmids, gene specific oligonucleotides (Table 1) were phosphorylated, annealed, and ligated into pRetro-Super vector (Brummelkamp et al., 2002) digested with *Bgl*III and *Hind*III. The Cre-expressing adenovirus was kindly provided by Dr. Gen-Sheng Feng (Burnham Institute for Medical Research, CA). Dual-Luciferase Reporter Assay System was purchased from Promega (Madison, WI). Trizol reagent for RNA isolation, the SYBR Green I kit, the Annexin V-EGFP Apoptosis Detection kit and the ET-1 ELISA kit were from Invitrogen (Carlsbad, CA), Roche (Indianapolis, IN), BioVision (Mountain View, CA) and R & D Systems (Minneapolis, MN), respectively. Anti-Pan-cytokeratin antibody was purchased from Santa Cruz Biotechnology (Santa Cruz, CA). Anti-Tcf-4 antibody was from Upstate (Lake Placid, NY). Anti-GSK-3 β and Anti-phospho-GSK-3 β (serine 9) antibodies were from Cell Signaling Technology (Beverly, MA). All secondary antibodies were from Jackson ImmunoResearch (West Grove, PA). C57BL/6J mouse with floxed β -cat alleles were purchased from The Jackson Laboratory (Bar Harbor, ME). LY294002, BQ123, synthetic ET-1, thiorphan and anti- β -cat antibody were purchased from Sigma.

Cell Lines and Mouse Primary PrEC Culture. DU145 and LNCaP cells were acquired from American Type Culture Collection and maintained in RPMI1640 supplemented with 10%

MOL19620

fetal bovine serum (FBS). Primary culture of mouse PrECs was prepared as previously described (Ravindranath and Dym, 1999; Sawicki and Rothman, 2000). Briefly, pieces of prostate tissue dissected from 10-week-old male mice with floxed β -cat alleles were incubated in DMEM/F-12 medium containing type I collagenase (1 mg/ml) at 37°C for 20 min on a rotator. The sediment was resuspended in DMEM/F-12 containing collagenase (1 mg/ml) and hyaluronidase (1 mg/ml) at 37°C for 30 min on a rotator. The cell aggregates were then cultured in DMEM/F-12 containing 10% FBS in 5% CO₂ at 37°C overnight. In the following morning, floating epithelial clumps were collected and further digested with 0.05% trypsin-EDTA at 37°C for 10 min, followed by passing through a 40 μ m cell strainer. Approximately 5×10^4 cells were inoculated to each well of a 24-well plate in 1 ml DMEM/F-12, 4% FBS, 10 ng/ml cholera toxin, 1 μ M dexamethasone and ITS supplement. The cells were maintained in 5% CO₂ at 37°C and used within one week.

Luciferase Assay. Cells were transfected with reporter plasmids combined with plasmids encoding β -cat or Tcf-4 using lipofectamine 2000 (Invitrogen). Plasmid PRL-CMV encoding *Renilla* luciferase (at one-fifth molar ratio to test plasmids) was co-transfected with test plasmids in each transfection as an internal control for data normalization. The luciferase assays were performed 24 hours post transfection with a Dual-Luciferase Reporter Assay System (Promega) according to the manufacturer's instructions. Each experiment was repeated for three times in duplicates and results are shown as Mean \pm Standard Error.

Retroviral Infection. Retrovirus was produced by transfecting phoenix packaging cells with retroviral-based plasmids. Tissue culture supernatants were collected 48 hours post transfection and filtered through 0.45 μ m filters. Infection was performed overnight with the retrovirus-

MOL19620

containing media and polybrene (8 µg/ml). Pools of stable infectants were generated via selection with puromycin (5 µg/ml).

Real-Time Quantitative Reverse-Transcriptase (RT) PCR. RNA were prepared using Trizol reagent followed by purification with TURBO DNA-free System (Ambion, Austin, TX). The cDNAs were synthesized using Superscript II reverse transcriptase (Invitrogen). Real-time quantitative PCR was performed on the LightCycler thermal cycler system (Roche Diagnostics, Indianapolis, IN) using SYBR Green I kit (Roche) as described by the manufacturer. The results were normalized against that of the housekeeping gene glyceraldehyde-3-phosphate dehydrogenase (GAPDH) in the same sample. The primers used are as follows: for human *ET-1*, 5'-TCCTCTGCTGGTTCCTGACT-3' (forward) and 5'-CAGAAACTCCACCCCTGTGT-3' (reverse); for human cyclin D1, 5'-ACGCTTTGTCTGTCGTGATG-3' (forward) and 5'-AACCAGAAATGCACAGACCC-3' (reverse); for human *GAPDH*, 5'-GTCAGTGGTGGACCTGACCT-3' (forward) and 5'-TGCTGTAGCCAAATTCGTTG-3' (reverse); for mouse *ET-1*, 5'-TGGACATCATCTGGGTCAACA-3' (forward) and 5'-GACCTGGAAGAACCTCCCAATC-3' (reverse); for mouse cyclin D1, 5'-TACCGCACAACGCACTTTCT-3' (forward) and 5'-TCCACATCTCGCACGTCGGT-3' (reverse); for mouse *GAPDH*, 5'-TTCACCACCATGGAGAAGGC-3' (forward) and 5'-GGCATGGACTGTGGTCATGA-3' (reverse). Each experiment was repeated for two times in triplicates and results are expressed as Mean ± Standard Error.

Immuno-Assays. The secreted ET-1 levels in cell culture supernatants were determined using an ET-1 ELISA kit. Briefly, cells were grown to confluence in 10-cm dishes in RPMI1640 supplemented with 10% FBS, followed by replacing the medium with serum-free medium and further incubation for 16 hours. The cell culture supernatants were collected for ELISA

MOL19620

according to the manufacturer's instructions (R & D Systems). ELISA-detected ET-1 concentrations were normalized against cell number (per 10^6 cells). Each ELISA experiment was repeated for three times in duplicates and results are expressed as Mean \pm Standard Error. Immunoblotting and immunocytochemistry were performed as previously described with respective antibodies (Zhang et al., 1998; Hanazono et al., 1998). To prepare the soluble cell lysate fraction, DU145 cells were lysed in 0.1% NP-40 lysis buffer (0.1% NP-40, 10 mM HEPES, pH 7.5, 142.5 mM KCl, 5 mM MgCl₂, 1 mM EGTA). The lysates were centrifuged at 13,000 rpm for 10 min, and the supernatants were saved as soluble cell lysate. The pellets representing the insoluble fraction of cell lysates were lysed in RIPA buffer.

Chromatin Immunoprecipitation (ChIP). Tissue and cell ChIPs were performed as previously described (Sun and Loh, 2001; Sun and Loh, 2002) except that protein G sepharose beads were used instead of Staph A cells for binding the immune complexes in these experiments. The primers used are as the following: for human *ET-1* promoter (-290/-65 fragment) amplification, 5'-CAGCTTGCAAAGGGGAAGCG-3' (forward) and 5'-TCCGACTTTATTCCAGCCCC-3' (reverse); for mouse *ET-1* promoter (-290/-65 fragment) amplification, 5'-CAGCTAGCAAAAAGGGGAAGC-3' (forward) and 5'-TCTGACTTTATTCCAGCCCT-3' (reverse); for human/mouse *GAPDH* exon 8 amplification, 5'-ATCACTGCCACCCAGAAGACTGTGGA-3' (forward) and 5'-TCATACCAGGAAATGAGCTTGACAAA-3' (reverse).

[³H]-Thymidine Incorporation Assay. Cells were seeded at 2×10^5 cells per well in a 24-well plate. The cells were placed in serum-free medium for 10 hours followed by incubation in nucleotide-free medium containing 10% dialyzed FBS and 1 μ Ci/well [³H]-thymidine (Amersham-Pharmacia) in the presence or absence of 5 pM synthetic ET-1 for 12 hours.

MOL19620

Quantitation was performed as described (Coward et al., 1998). Each experiment was repeated for three times in triplicates and results are expressed as Mean \pm Standard Error.

Apoptosis Analysis. Cells were seeded at 5×10^5 per well in 6-well plates. After cells attached to the dishes (approximately 2 hours after seeding), cells were treated with paclitaxel (5 nM) in the presence or absence of ET-1 (5 pM or 100 pM) for 12 hours. Cell apoptosis was detected with an Annexin V-EGFP Apoptosis Detection kit (BioVision) coupled with flow cytometry analysis.

Statistical Analysis. Statistic tests were performed using analysis of variance (ANOVA) followed by *post-hoc* comparisons of means by the least-significance differences method. The statistical significance level was set at 0.05 ($\alpha=0.05$) for each analysis.

MOL19620

Results

β-Cat/Tcf-4 Directly Activates the ET-1 Promoter in DU145 CaP Cells. The human *ET-1* promoter contains multiple potential Tcf binding elements (TBE) (Kim et al., 2005). In this study, we identified a functional TBE located at -73 to -67 bp relative to the transcription initiation site (TIS, designated as +1) in the human *ET-1* promoter in DU145 CaP cells (Fig. 1A). The *ET-1* promoter sequence spanning from -1300 to +230 bp surrounding the TIS was inserted into a luciferase reporter plasmid to make an *ET-1* promoter reporter. A mutated *ET-1* promoter reporter was generated by deleting the functional TBE from the *ET-1* promoter reporter (Fig. 1B). Deletion of the functional TBE (-73/-67) markedly decreased the *ET-1* promoter activity and abolished the synergistic effect of β-cat and Tcf-4 on transactivation of the *ET-1* promoter (Fig. 1C). To verify that Tcf-4 binds to the *ET-1* promoter *in vivo*, we performed ChIP assays. As shown in Fig. 1D, *ET-1* promoter fragments containing the putative TBE (-73/-67) were specifically precipitated from crosslinked DU145 chromatin extracts with an anti-Tcf-4 antibody. In contrast, no detectable *ET-1* promoter fragment was precipitated with an anti-tubulin antibody. Collectively, these results indicate that β-cat/Tcf-4 specifically binds to and transactivates the *ET-1* promoter in DU145 CaP cells.

Knockdown of β-Cat/Tcf-4 Signaling Inhibits Expression of ET-1 in DU145 Cells. To investigate the role of β-cat/Tcf-4 in regulating ET-1 expression in CaP cells, DU145 cells stably expressing small interference RNA (siRNA) against *β-cat* or *Tcf-4* were generated using a retroviral vector (Brummelkamp et al., 2002). Immunoblotting analysis revealed that over 70% of endogenous β-cat or the two isoforms of Tcf-4 present in DU145 cells (Chesire et al., 2002a) were knocked down by expressing corresponding siRNA. In contrast, a siRNA with scrambled

MOL19620

sequence showed no effect on expression of either β -cat or Tcf-4 in DU145 cells (Fig. 2A). The transcriptional activity of β -cat/Tcf-4 in the β -cat- or Tcf-4-knockdown DU145 cells was also significantly reduced compared with that in the scrambled-siRNA-expressing cells, as measured by the luciferase activities of TOPflash, a synthetic β -cat/Tcf-dependent luciferase reporter (Fig. 2B). In contrast, little change was observed with FOPflash, a negative control reporter with mutated TBEs. Real-time quantitative RT-PCR assays showed a 65% decrease at the *ET-1* mRNA level (Fig. 2C) and ELISA assays detected a 55% reduction of secreted ET-1 in the β -cat- or Tcf-4-knockdown DU145 cells, compared with control cells expressing scrambled siRNA (Fig. 2D). As a positive control, the mRNA level of *cyclin D1*, an established downstream target of β -cat/Tcf signaling in CaP cells (Chesire et al., 2002b), was also significantly reduced by knockdown of β -cat or Tcf-4 (Fig. 2C). In addition, overexpression of *β -cat* significantly raised the TOPflash activity (Fig. 1E), the *ET-1* and the *cyclin D1* mRNA levels (Fig. 1F), and the secreted ET-1 level (Fig. 1G) in DU145 cells. Together, these results indicate that endogenous β -cat/Tcf-4 signaling plays an essential role in regulating ET-1 expression in DU145 cells.

Activation of β -Cat/Tcf-4 Signaling Increases Expression of ET-1 in LNCaP Cells. The LNCaP cell is an androgen-dependent human CaP cell line that minimally expresses ET-1 (Nelson et al., 2001). In agreement with a previous report that LNCaP cells exhibit poor CRT activity because of a low expression level of Tcf-4 (Chesire et al., 2002a), overexpression of *β -cat* in LNCaP cells showed little effect on the constitutively low TOPflash luciferase activity, while transfection of *Tcf-4* alone or co-transfection of *β -cat* and *Tcf-4* augmented the TOPflash activity by approximately 1.5-fold and 3-fold, respectively (Fig. 3A). In accordance with the results, overexpression of *Tcf-4* alone or with *β -cat* increased the *ET-1* mRNA level as well as

MOL19620

the *cyclin D1* mRNA level to approximately 1.5-fold and 2-fold of the control, respectively (Fig. 3B). ELISA detection of secreted ET-1 in the presence of neutral endopeptidase 24.11 (NEP) inhibitor thiorphan (Dawson et al., 2004) showed that overexpression of *Tcf-4* alone or co-expression of β -cat and *Tcf-4* increased the ET-1 protein secretion to about 1.5-fold and 1.9-fold of the control, respectively (Fig. 3C). Thiorphan was used in the culture because LNCaP cells highly express NEP, a cell-surface enzyme that cleaves and inactivates ET-1 (Sumitomo et al., 2000; Sumitomo et al., 2001). Collectively, the results indicate that activated β -cat/Tcf-4 signaling is capable of up-regulating ET-1 expression in LNCaP cells, though ET-1 appears not responsible for the tumorigenicity of LNCaP cells. Together with the findings in DU145 cells, these results suggest that activation of β -cat/Tcf-4 signaling is required to enhance expression of ET-1 in both androgen-independent and androgen-dependent CaP cells.

Knockdown of Endogenous β -Cat Inhibits Transcription of ET-1 in Mouse Primary PrECs. As both malignant and normal PrECs produce ET-1 (Nelson et al., 2001), we next examined whether β -cat/Tcf-4 regulates expression of ET-1 in normal PrECs. Sequence alignment showed that the mouse *ET-1* promoter shares an overall 70% sequence homology with its human counterpart (Harats et al., 1995). Notably, approximately 90% sequence identity is present in the 400-bp region immediately upstream of the TIS. In addition, the -73/-67 TBE, the TATA consensus sequences, and the TIS are conserved both in sequences and in relative locations between the human and the mouse *ET-1* promoters (Fig 4A) (Harats et al., 1995). CHIP assays using an anti-Tcf-4 antibody specifically precipitated DNA fragments containing the -73/-67 TBE from the mouse prostate tissue (Fig. 4B), suggesting *in vivo* binding of Tcf-4 to the mouse *ET-1* promoter via the particular TBE.

MOL19620

To investigate the role of β -cat/Tcf-4 in regulating ET-1 expression in normal PrECs, we made primary PrEC cultures from mice with floxed β -cat alleles. As shown in Fig. 4C, majority of the cultured PrECs (~80%) displayed typical epithelial morphology and immunofluorescence staining for epithelial marker cytokeratin (Hanazono et al., 1998). In contrast, stromal cells in the same view field showed no cytokeratin staining. These results verify the epithelial nature of the primary cultures as well as the specificity of the immunostaining performed. To ablate expression of β -cat, the mouse PrEC cultures were infected with an adenovirus encoding Cre recombinase. β -Cat expression and TOPflash activities were markedly decreased in PrECs infected with the adenoviral-Cre, but not in cells infected with a control adenovirus (Fig. 4D-E). Quantitative real-time RT-PCR showed a 45% down-regulation at the *ET-1* mRNA level as well as at the *cyclin D1* mRNA level in PrECs with knockdown of β -cat, compared with that of the control cells (Fig. 4F). Thus, β -cat/Tcf signaling appears responsible for a substantial part of ET-1 expression in normal prostate epithelium. Furthermore, overexpression of β -cat by infecting PrECs with a β -cat-encoding retrovirus elevated the TOPflash activity and the *ET-1* mRNA level to approximately 3.5-fold and 1.9-fold of the control, respectively (Fig. 4G-H). Together, these results manifest a potent role of β -cat/Tcf signaling in regulating transcription of the *ET-1* gene in normal prostate epithelium.

ET-1 Enhances β -Cat/Tcf Signaling via a PI3K-Dependent Mechanism. Having established ET-1 as a downstream target of the β -cat/Tcf pathway in CaP cells as well as in normal prostate epithelium, we asked whether ET-1 could reciprocally affect β -cat/Tcf signaling. Previous studies demonstrated that ET-1 stimulates the PI3K/Akt pathway via the ET-A receptor (Shi et al., 2004) and that stimulation of the PI3K/Akt pathway increases the stability of soluble

MOL19620

β -cat by phosphorylation and inactivation of GSK-3 β in CaP cells (Sharma et al., 2002). To examine the effects of ET-1 on β -cat/Tcf signaling in CaP cells, we first determined the soluble β -cat level in DU145 cells treated with ET-1 in the presence or absence of a PI3K-specific inhibitor. As shown in Fig. 5A, exogenous ET-1 (≤ 100 pM) concentration-dependently increased the soluble β -cat level in DU145 cells until a plateau was reached. Treatment with selective PI3K inhibitor LY294002 abolished the increase of soluble β -cat induced by exogenous ET-1. In contrast, β -actin and insoluble pool of β -cat showed no detectable change. These results suggest that ET-1 increases soluble β -cat in DU145 cells through a PI3K-dependent manner. To determine the effect of endogenous ET-1 on soluble β -cat, a selective ET-A receptor antagonist BQ123 was employed to block endogenous ET-1 function in DU145 cells, because ET-A receptor is the predominant type of ET receptors in CaP cells (Nelson et al., 1996). Densitometry showed that treatment of DU145 cells with BQ123 decreased the soluble β -cat level by approximately 50% of the control in the presence or absence of exogenous ET-1 (Fig. 5A), which indicates that endogenous ET-1 constitutively maintains a part of the soluble β -cat pool in DU145 cells.

GSK-3 β is a major downstream target of the PI3K/Akt pathway. Phosphorylation of GSK-3 β at serine 9 by PI3K/Akt inactivates it and results in subsequent stabilization and accumulation of soluble β -cat (Sharma et al., 2002). To verify that ET-1 increases soluble β -cat through the PI3K/Akt pathway, we examined serine 9-phosphorylation status of GSK-3 β in DU145 cells treated with ET-1 in the presence or absence of a PI3K-specific inhibitor. To manifest the phosphorylation status of GSK-3 β , DU145 cell lysates were precipitated with an anti-GSK-3 β antibody and blotted with an antibody that specifically recognized the serine 9-phosphorylated

MOL19620

GSK-3 β . As expected, exogenous ET-1 (≤ 100 pM) concentration-dependently enhanced phosphorylation of GSK-3 β , which was blocked by LY294002. BQ123 further brought down the phosphorylation level of GSK-3 β below that of the untreated control, with or without the presence of exogenous ET-1 (Fig. 5A).

Consistent with the above findings, treatment of DU145 cells with exogenous ET-1 increased the TOPflash activities to 2.3-fold of the control and raised the *ET-1* mRNA level and the *cyclin D1* mRNA level to about 2-fold of the control. LY294002 completely blocked this effect, while BQ123 further decreased the TOPflash activity level by about 60% and reduced the *ET-1* mRNA level and the *cyclin D1* mRNA level by 50%, compared with those of the untreated control (Fig. 5B-C). Together, these results indicate that ET-1 enhances β -cat/Tcf signaling in DU145 cells by increasing the soluble pool of β -cat through a PI3K-dependent pathway and that endogenous ET-1 maintains part of the constitutive β -cat/Tcf signaling in DU145 cells. Together with our findings that β -cat/Tcf-4 transcriptionally activates ET-1 in CaP cells, these results suggest that a positive feedback loop between β -cat/Tcf-4 signaling and ET-1 signaling may function to potentiate both signaling pathways in CaP cells.

β -Cat/Tcf-4 Promotes [3 H]-Thymidine Incorporation in DU145 Cells Partially via ET-1.

Both β -cat/Tcf signaling and ET-1 signaling are known to promote proliferation and survival of CaP cells (de la Taille et al., 2003; Nelson et al., 2003a). To determine functional significance of the β -cat/Tcf-4-regulated expression of ET-1 in CaP cells, [3 H]-thymidine incorporation assays were performed to examine the proliferation potential of the β -cat- or Tcf-4-knockdown DU145 cells. [3 H]-thymidine incorporation in DU145 cells expressing scrambled siRNA was taken as a control. As shown in Fig. 6, knockdown of β -cat or Tcf-4 in DU145 cells reduced the [3 H]-

MOL19620

thymidine incorporation to about 60% and 45% of the control, respectively. Treatment with exogenous ET-1 at a concentration (5 pM) that is comparable to the level of secreted ET-1 in normal DU145 cells recovered [³H]-thymidine incorporation to approximately 85% and 75% of the control, respectively ($P < 0.05$). In contrast, little change of [³H]-thymidine incorporation was observed in control cells treated with 5 pM of ET-1. Higher concentration of ET-1 at 100 pM significantly increased [³H]-thymidine incorporation in control cells but failed to further rescue [³H]-thymidine incorporation in the β -cat- or Tcf-4-knockdown cells, suggesting that ET-1 mediates proliferation of CaP cells partially through β -cat/Tcf-4 signaling and that other β -cat/Tcf-4 target genes play irreplaceable roles in β -cat/Tcf-mediated CaP cell growth. Annexin V/PI staining in parallel of the [³H]-thymidine incorporation assays showed little difference in apoptosis among the β -cat- or Tcf-4-knockdown cells and the control cells (data not shown), indicating that the changes observed in the [³H]-thymidine incorporation assays were directly resulted from cell proliferation. In addition, the observed cell proliferation-promoting effect of ET-1 appears to be independent of enhancing β -cat/Tcf-4 signaling, because exogenous ET-1 hardly rescued β -cat/Tcf signaling in the β -cat- or Tcf-4-knockdown DU145 cells (data not shown). Taken together, these results indicate that ET-1 partially mediates of β -cat/Tcf-4-regulated proliferation of DU145 cells as a downstream target of β -cat/Tcf-4 signaling.

ET-1 Suppresses Paclitaxel-Induced Apoptosis That Is Sensitized in the β -Cat- or Tcf-4-Knockdown DU145 Cells. We next examined whether β -cat/Tcf-4 signaling regulates survival of CaP cells via ET-1. Under normal culture conditions, the β -cat- or Tcf-4-knockdown DU145 cells displayed no excessive apoptosis compared with control cells expressing scrambled siRNA (Fig. 7). However, treatment with a low concentration (5 nM) of paclitaxel, an apoptosis-

MOL19620

inducing drug for treating a wide variety of cancers including CaP (Kim et al., 2004), led to approximately 36% cell death in the β -cat- or Tcf-4-knockdown DU145 cells, while only about 10% cell death was induced in the control cells. Treatment with exogenous ET-1 significantly ($P < 0.05$) reduced the cell death to approximately 20% at 5 pM and nearly completely suppressed the paclitaxel-induced apoptosis at 100 pM in the β -cat- or Tcf-4-knockdown DU145 cells. These results indicate that endogenous β -cat/Tcf-4 signaling maintains a state of apoptosis-resistance in DU145 cells essentially via ET-1.

MOL19620

Discussion

We have demonstrated in this study that β -cat/Tcf-4 signaling regulates ET-1 expression in both malignant and normal PrECs via direct modulation of the *ET-1* promoter activity. Meanwhile, ET-1 stimulates β -cat/Tcf-4 signaling via a PI3K-dependent pathway. The positive inter-regulation between β -cat/Tcf-4 signaling and ET-1 signaling plays an important role in promoting proliferation and survival of CaP cells.

Both β -cat and ET-1 are associated with CaP progression, particularly, the development of advanced, metastatic CaP (Chesire et al., 2002a; Pirskhalaishvili and Nelson, 2000). Significantly higher levels of ET-1 or cytoplasmic/nuclear β -cat were detected *in situ* in advanced, hormone-refractory CaP than in the primary disease (Chen et al., 2004; Nelson et al., 1996). In addition, abnormally elevated plasma ET-1 levels were detected in 58% of men with hormone-refractory CaP (Nelson et al., 2001). The proportion roughly matches that of high-level cytoplasmic/nuclear β -cat detected in CaP metastatic sites (Chen et al., 2004). Our results are consistent with the previous reports and uncover a mechanistic link between the activation of nuclear β -cat signaling and the high levels of ET-1 expression detected in advanced, hormone-refractory CaP.

Previous studies indicate that nuclear β -cat signaling is involved in CaP progression mainly through two pathways, namely, the β -cat/Tcf pathway and the β -cat/AR pathway (Chesire et al., 2002a). Activation of the β -cat/Tcf pathway promotes cell proliferation and suppresses apoptosis (de la Taille et al., 2003). On the other hand, β -cat interacts with AR in a ligand-dependent manner and potentiates the androgen signaling pathway that also increases cell proliferation and survival. In androgen-dependent CaP cells, activation of the β -cat/AR pathway inhibits the β -cat/Tcf pathway by competing away nuclear β -cat (Mulholland et al., 2003; Chesire et al.,

MOL19620

2002b). Consistent with these reports, our results show that the β -cat/Tcf pathway is constitutively active in androgen-independent DU145 CaP cells (Fig. 2). Interestingly, the β -cat/Tcf pathway is also constitutively active in mouse primary PrECs, though at a relatively low level (Fig. 4E). It is likely that a reciprocal balance between the β -cat/Tcf and the β -cat/AR pathways contributes to the homeostasis of normal prostate epithelium. Disruption of the balance may lead to abnormal cell proliferation and survival, which eventually promotes tumorigenesis.

Our results revealed that ET-1 stimulates β -cat/Tcf-4 signaling in a PI3K-dependent manner in DU145 cells, as a positive feedback to β -cat/Tcf-4-mediated transcription. As a downstream target of the β -cat/Tcf-4 pathway, ET-1 may regulate proliferation and survival of CaP cells via classical ET-1 signaling mechanisms (Nelson et al., 2003a). On the other hand, by enhancing β -cat/Tcf-4 signaling, ET-1 may also regulate proliferation and survival of CaP cells through other downstream targets of β -cat/Tcf-4 in addition to ET-1 itself, such as *c-myc* and *cyclin D1* (de la Taille et al., 2003). Consistent with this notion, we found that exogenous ET-1 could only partially rescue DU145 cell proliferation reduced by knocking down β -cat or Tcf-4 (Fig. 6). However, the β -cat/Tcf-4-regulated expression of ET-1 serves as a major contributor to the survival of DU145 cells under severe stress (Fig. 7). The apoptosis-protective effect of ET-1 on DU145 cells appears to be independent of enhancing β -cat/Tcf-4 signaling, because endogenous β -cat/Tcf-4 signaling in the β -cat- or Tcf-4-knockdown DU145 cells was irreversibly abrogated and recalcitrant to rescue by exogenous ET-1 (data not shown). The underlying mechanism remains to be determined.

Previous studies demonstrated the presence of high levels of cytoplasmic/nuclear β -cat in advanced, hormone-refractory CaP (Chen et al., 2004). It is postulated that a portion of hormone-refractory CaP containing cytoplasmic/nuclear β -cat staining bears elevated CRT due to relief of

MOL19620

AR-mediated CRT repression (Chesire and Isaacs, 2003). We propose that the elevated CRT promotes expression of ET-1, which in turn further enhances β -cat/Tcf-4 signaling and ET-1 expression in a PI3K-dependent manner. The positive feedback loop between β -cat/Tcf-4 signaling and ET-1 signaling enhances both signaling pathways to potentiate proliferation and survival of CaP cells against severe stress such as androgen ablation and chemotherapeutic agents, thereby promoting the progression and malignancy of CaP. Hence, the newly uncovered positive inter-regulation between β -cat/Tcf-4 signaling and ET-1 signaling likely represents a novel mechanism that contributes to the progression of at least a subset of androgen-independent CaP that possesses active β -cat/Tcf signaling. Moreover, our results suggest that a combination of ET-A receptor antagonist and appropriate chemotherapeutic agent(s) could prove effective in treatment of advanced CaP.

MOL19620

Acknowledgements

We would like to thank Dr. Hans Clevers (Netherlands Institute for Developmental Biology, The Netherlands) for the human *β-cat* and *Tcf-4* expression plasmids and Dr. Gen-Sheng Feng (Burnham Institute for Medical Research, CA) for the Cre recombinase-encoding adenovirus.

MOL19620

References

Barker N and Clevers H (2000) Catenins, Wnt signaling and cancer. *Bioessays* **22**: 961-5.

Brummelkamp TR, Bernards R and Agami R (2002) Stable suppression of tumorigenicity by virus-mediated RNA interference. *Cancer Cell* **2**: 243-7.

Chen G, Shukeir N, Potti A, Sircar K, Aprikian A, Goltzman D and Rabbani SA (2004) Up-regulation of Wnt-1 and β -catenin production in patients with advanced metastatic prostate carcinoma: potential pathogenetic and prognostic implications. *Cancer* **101**: 1345-56.

Chesire DR, Ewing CM, Sauvageo J, Bova GS, Isaacs WB (2000) Detection and analysis of β -catenin mutation in prostate cancer. *Prostate* **45**: 323-34.

Chesire DR, Ewing CM, Gage WR and Isaacs WB (2002a) In vitro evidence for complex modes of nuclear β -catenin signaling during prostate growth and tumorigenesis. *Oncogene* **21**: 2679-94.

Chesire DR and Isaacs WB (2002b) Ligand-dependent inhibition of β -catenin/TCF signaling by androgen receptor. *Oncogene* **21**: 8453-69.

Chesire DR and Isaacs WB (2003) β -catenin signaling in prostate cancer: an early perspective. *Endocr Relat Cancer* **10**: 537-60.

MOL19620

Coward P, Wada HG, Falk MS, Chan SD, Meng F, Akil H and Conklin BR (1998) Controlling signaling with a specifically designed Gi-coupled receptor. *Proc Natl Acad Sci USA* **95**: 352-7.

Culig Z, Hobisch A, Hittmair A, Peterziel H, Cato AC, Bartsch G and Klocker H (1998) Expression, structure, and function of androgen receptor in advanced prostatic carcinoma. *Prostate* **35**: 63-70.

Dawson LA, Maitland NJ, Turner AJ and Usmani BA (2004) Stromal-epithelial interactions influence prostate cancer cell invasion by altering the balance of metallopeptidase expression. *Br J Cancer* **90**: 1577-82.

Fisher M (2002) The endothelin-1 antagonist, atrasentan, improves time to progression and quality of life in hormone-refractory prostate cancer. *Clin Prostate Cancer* **1**: 79-80.

Gerstein AV, Almeida TA, Zhao G, Chess E, Buhler K, Pienta K, Rubin MA, Vessella R, and Papadopoulos N (2002) APC/CTNNB1 (beta-catenin) pathway alterations in human prostate cancers. *Genes Chromosomes Cancer* **34**: 9-16.

Granchi S, Brocchi S, Bonaccorsi L, Baldi E, Vinci MC, Forti G, Serio M and Maggi M. Endothelin-1 production by prostate cancer cell lines is up-regulated by factors involved in cancer progression and down-regulated by androgens. *Prostate* 2001; 49: 267-77.

MOL19620

Grant ES, Brown T, Roach A, Williams RC and Habib FK (1997) In vitro expression of endothelin-1 (ET-1) and the ET_A and ET_B ET receptor by the prostatic epithelium and stroma. *J Clin Endocrinol Metab* **82**: 508-13.

Hanazono M, Nakagawa E, Aizawa S and Tmooka Y (1998) Establishment of prostatic cell line “Pro9ad” from a p53-deficient mouse. *Prostate* **36**: 102-9.

Harats D, Kurihara H, Belloni P, Oakley H, Ziober A, Ackley D, Cain G, Kurihara Y, Lawn R and Sigal E (1995) Targeting gene expression to the vascular wall in transgenic mice using the murine preproendothelin-1 promoter. *J Clin Invest* **95**: 1335-44.

Kim SJ, Uehara H, Yazici S, Langley RR, He J, Tsan R, Fan D, Killion JJ and Fidler IJ (2004) Simultaneous blockade of platelet-derived growth factor-receptor and epidermal growth factor-receptor signaling and systemic administration of paclitaxel as therapy for human prostate cancer metastasis in bone of nude mice. *Cancer Res* **64**: 4201-8.

Kim TH, Xiong H, Zhang Z and Ren B (2005) β -Catenin Activates the growth factor endothelin-1 in colon cancer cells. *Oncogene* **24**: 597-604.

Miller AD and Rosman GJ (1989) Improved retroviral vectors for gene transfer and expression. *Biotechniques* **7**: 980-2.

MOL19620

Mulholland DJ, Read JT, Rennie, PS, Cox ME and Nelson CC (2003) Functional localization and competition between the androgen receptor and T-cell factor for nuclear β -catenin: a means for inhibition of the Tcf signaling axis. *Oncogene* **22**: 5602-13.

Nelson JB, Chan-Tack K, Hedican SP, Magnuson SR, Opgenorth TJ, Bova GS and Simons JW (1996) Endothelin-1 production and decreased endothelin B receptor expression in advanced prostate cancer. *Cancer Res* **56**: 663-8.

Nelson JB, Hedican SP, George DJ, Baldi E, Vinci MC, Forti G, Serio M and Maggi M (2001) Identification of endothelin-1 in the pathophysiology of metastatic adenocarcinoma of the prostate. *Nat Med* **1**: 944-9.

Nelson J, Bagnato A, Battistini B and Nisen P (2003a) The endothelin axis: emerging role in cancer. *Nat Rev Cancer* **3**: 110-6.

Nelson JB, Nabulsi AA, Vogelzang NJ, Breul J, Zonnenberg BA, Daliani DD, Schulman CC and Carducci MA (2003b) Suppression of prostate cancer induced bone remodeling by the endothelin receptor A antagonist atrasentan. *J Urol* **169**: 1143-9.

Nusse R (1999) Repression and activation. *Trends Genet* **15**:1-3.

Pirtskhalaishvili G and Nelson JB (2000) Endothelin-derived factors as paracrine mediators of prostate cancer progression. *Prostate* **44**: 77-87.

MOL19620

Ravindranath N and Dym M (1999) Isolation of rat ventral prostate basal and luminal epithelial cells by the STAPUT technique. *Prostate* **41**: 173-80.

Sawicki JA and Rothman CJ (2000) Evidence for stem cells in cultures of mouse prostate epithelial cells. *Prostate* **50**: 46-53.

Sharma M, Chuang WW and Sun Z (2002) Phosphatidylinositol 3-kinase/Akt stimulates androgen pathway through GSK3beta inhibition and nuclear beta-catenin accumulation. *J Biol Chem* **277**: 30935-41.

Shi WX, Chen Y, Denton CP, Eastwood M, Renzoni EA, Bou-Gharios G, Pearson JD, Dashwood M, du Bois RM, Black CM, Leask A and Abraham DJ (2004) Endothelin-1 promotes myofibroblast induction through the ETA receptor via a rac/phosphoinositide 3-kinase/Akt-dependent pathway and is essential for the enhanced contractile phenotype of fibrotic fibroblasts. *Mol Biol Cell* **15**: 2707-19.

Sumitomo M, Milowsky MI, Shen R, Navarro D, Dai J, Asano T, Hayakawa M and Nanus D M (2001) Neutral endopeptidase inhibits neuropeptide-mediated transactivation of the insulin-like growth factor receptor-Akt cell survival pathway. *Cancer Res* **61**: 3294-8.

MOL19620

Sumitomo M, Shen R, Walburg M, Dai J, Geng Y, Navarro D, Boileau G, Papandreou CN, Giacotti FG, Knudsen B and Nanus DM (2000) Neutral endopeptidase inhibits prostate cancer cell migration by blocking focal adhesion kinase signaling. *J Clin Invest* **106**: 1399-1407.

Sun P and Loh HH (2001) Transcriptional regulation of mouse δ -opioid receptor gene: role of Ets-1 in the transcriptional activation of mouse δ -opioid receptor gene. *J Biol Chem* **276**: 45462-9.

Sun P and Loh HH (2002) Transcriptional regulation of mouse δ -opioid receptor gene: role of Ikaros in the stimulated transcription of mouse δ -opioid receptor gene in activated T cells. *J Biol Chem* **277**: 12854-60.

de la Taille A, Rubin MA, Chen MW, Vacherot F, Burchardt M, Buttyan R and Chopin D (2003) β -catenin-related anomalies in apoptosis-resistant and hormone-refractory prostate cancer cells. *Clin Cancer Res* **9**: 1801-7.

Wodarz A and Nusse R (1998) Mechanisms of Wnt signaling in development. *Annu Rev Cell Dev Biol* **14**: 59-88.

Zhang Z, Hartmann H, Do Vm, Abramowski D, Sturchler-Pierrat C, Staufenbiel M, Sommer B, van de Wetering M, Clevers H, Saftig P, De Strooper B, He X and Yankner BA (1998) Destabilization of beta-catenin by mutations in presenilin-1 potentiates neuronal apoptosis. *Nature* **395**: 698-702.

MOL19620

Footnotes

This study was supported by a grant from Department of Defense (PC030922, to Z.Z.) and an NIH grant (R01DC006497, to Z.Z.)

MOL19620

Figure Legends

Fig. 1. β -Cat/Tcf-4 Directly Activates the *ET-1* Promoter in DU145 CaP Cells.

A. Schematic representation of the human *ET-1* promoter. The relative position of the TATA box, the functional Tcf binding element (TBE), and the transcription initiation site (TIS) (designated as +1) are shown. The *ET-1* promoter fragment amplified in ChIP is indicated (black bar).

B. Illustration of the *ET-1* promoter reporter constructs. The human *ET-1* promoter sequence spanning from -1362 to +230 bp surrounding the TIS was inserted into a luciferase (LUC) reporter plasmid to make the *ET-1* promoter (ETP) reporter. A mutated *ET-1* promoter (muETP) reporter was generated by deleting the functional TBE from ETP.

C. Regulation of the *ET-1* promoter activity in DU145 cells. ETP or muETP was co-transfected with plasmids encoding β -cat or *Tcf-4* into DU145 cells. Luciferase assays were performed 24 hours post-transfection. Normalized luciferase activities are expressed as Mean \pm Standard Error (* $P < 0.05$ vs. ETP). The empty expression vector (pcDNA3.1, Invitrogen) was added to make an equal amount of DNA for each transfection.

D. Binding of Tcf-4 to the *ET-1* promoter *in vivo*. Crosslinked DU145 chromatin extracts were immunoprecipitated with an anti-Tcf-4 antibody (α -Tcf-4) or an anti-tubulin antibody (α -Tubulin). The *ET-1* promoter fragment covering -290 to -65 bp (ETP -260/-65) and a DNA fragment from exon 8 of human *GAPDH* gene (*GAPDH*) were PCR amplified from the immunoprecipitated and the input chromatin, respectively.

Fig. 2. Knockdown of Endogenous β -Cat or Tcf-4 Decreases Expression of ET-1 in DU145 Cells.

MOL19620

A. Knockdown of endogenous β -cat or Tcf-4 by gene specific retroviral siRNA. Lysates from DU145 cells stably expressing scrambled-siRNA (Scr-siRNA), siRNA against β -cat (β -Cat-siRNA), or siRNA against *Tcf-4* (Tcf-4-siRNA) as well as lysates from cells infected with an empty control retrovirus (pRS) were analyzed for β -cat or Tcf-4 expression by immunoblotting. The same membrane was blotted with an anti-tubulin antibody as the loading control.

B. Transcriptional activities of β -cat/Tcf in the β -cat- or Tcf-4-knockdown DU145 cells. The TOPflash (*filled bar*) or FOPflash (*empty bar*) reporter was transfected into DU145 cells expressing Scr-siRNA, β -Cat-siRNA, or Tcf-4-siRNA. Luciferase assays were performed 24 hours post-transfection. Normalized luciferase activities were expressed as fold activation to the FOPflash luciferase activity of cells expressing Scr-siRNA (arbitrarily defined as 1).

C. *ET-1* mRNA levels in the β -cat- or Tcf-4-knockdown DU145 cells. The *ET-1* mRNA levels in DU145 cells expressing Scr-siRNA, β -Cat-siRNA, or Tcf-4-siRNA were determined by real-time quantitative RT-PCR. The mRNA level of *cyclin D1* was included as a positive control. Results were normalized as fold increase to the *ET-1* (*filled bar*) or the *cyclin D1* (*empty bar*) mRNA level of cells expressing Scr-siRNA (designated as 1) (* $P < 0.05$).

D. Levels of secreted ET-1 in the β -cat- or Tcf-4-knockdown DU145 cells. Secretion of ET-1 by DU145 cells expressing Scr-siRNA, β -Cat-siRNA, or Tcf-4-siRNA was quantitated using ELISA and normalized against cell number (* $P < 0.05$).

E. Transcriptional activities of β -cat/Tcf in DU145 cells overexpressing β -cat. The TOPflash (*filled bar*) or FOPflash (*empty bar*) reporter was co-transfected with a β -cat-encoding plasmid (β -Cat) or an empty plasmid (Control) into DU145 cells. Luciferase assays were performed 24 hours post-transfection. Luciferase activities were expressed as fold activation to the FOPflash luciferase activity of the Control (arbitrarily defined as 1).

MOL19620

F-G. *ET-1* and *cyclin D1* mRNA levels (**F**) and levels of secreted ET-1 (**G**) in DU145 cells transiently transfected with β -cat (**P* < 0.05).

Fig. 3. Activation of β -Cat/Tcf-4 Signaling Increases Expression of ET-1 in LNCaP Cells.

A. Induction of transcriptional activities of β -cat/Tcf-4 in LNCaP cells. The TOPflash (*filled bar*) or FOPflash (*empty bar*) reporter was co-transfected with the β -cat and/or the Tcf-4 expression plasmids into LNCaP cells. Cells co-transfected with the empty pcDNA3.1 vector and the TOPflash or FOPflash were taken as the control. Luciferase assays were performed 24 hours post-transfection. Luciferase activities were expressed as fold activation to the FOPflash luciferase activity of the control (designated as 1).

B. *ET-1* mRNA levels in LNCaP cells overexpressing β -cat and/or *Tcf-4*. The *ET-1* (*filled bar*) and the *cyclin D1* (*empty bar*) mRNA levels in LNCaP cells overexpressing β -cat and/or *Tcf-4* were determined by real-time quantitative RT-PCR. Results were normalized as fold increase to the *ET-1* or the *cyclin D1* mRNA level of the control, which is arbitrarily defined as 1 (**P* < 0.05).

C. Secretion of ET-1 in LNCaP cells overexpressing β -cat and/or *Tcf-4* in the presence (*filled bar*) or absence (*empty bar*) of thiorphan (1 μ M) (**P* < 0.05).

Fig. 4. Knockdown of Endogenous β -Cat Inhibits Transcription of *ET-1* in Primary PrECs.

A. Partial sequence alignment of the promoter region of human and murine *ET-1* genes. The -73/-67 TBE, the TATA box and the TIS are in *bold face* and *underscored*. The unmatched nucleotides are marked with vertical lines.

MOL19620

B. Binding of Tcf-4 to the mouse *ET-1* promoter *in vivo*. Crosslinked chromatin extracts from mouse prostate tissue were immunoprecipitated with an anti-Tcf-4 antibody (α -Tcf-4) or an anti-tubulin antibody (α -Tubulin). The *ET-1* promoter fragment covering -290 to -65 bp (ETP -260/-65) and a DNA fragment from exon 8 of mouse *GAPDH* gene (*GAPDH*) were PCR amplified from the immunoprecipitated and the input chromatin, respectively.

C. Primary culture of mouse PrECs harboring floxed β -cat alleles. PrECs were obtained from mice carrying homozygous floxed β -cat alleles. Primary PrECs on day 2 of culture were immunostained with an anti-pan-cytokeratin antibody. Images of phase contrast (*left panel*) and immunofluorescence staining for cytokeratin (*right panel*) of the same view field are shown. Epithelial cells (*red arrow*) and stromal cells (*black arrow*) are indicated.

D. Knockdown of β -cat in mouse PrECs with a Cre recombinase-encoding adenovirus. Lysates from PrECs infected with a Cre recombinase-encoding adenovirus (Cre) or an empty control adenovirus (Control) were analyzed for β -cat expression by immunoblotting 72 hours post infection. The same membrane was blotted with an anti-tubulin antibody as the loading control.

E-F. Deletion of β -cat down-regulates transcription of *ET-1* in mouse primary PrECs. Mouse PrECs infected with an adenovirus encoding Cre recombinase (Cre) or an empty control adenovirus (Control) were analyzed for transcriptional activities of β -cat/Tcf (**E**) and levels of *ET-1* mRNA and *cyclin D1* mRNA (**F**) (* $P < 0.05$).

G-H. Overexpression of β -cat increases transcription of *ET-1* in mouse primary PrECs. Mouse PrECs were infected with a retrovirus encoding β -cat or an empty control retrovirus (Control). Transcriptional activities of β -cat/Tcf (**G**) and levels of *ET-1* mRNA and *cyclin D1* mRNA (**H**) are shown (* $P < 0.05$).

MOL19620

Fig. 5. ET-1 Enhances β -Cat/Tcf Signaling via a PI3K-Dependent Mechanism.

A. Effects of ET-1 on β -cat level and GSK-3 β phosphorylation status in DU145 cells. DU145 cells were treated with ET-1 in the presence or absence of PI3K inhibitor LY294002 or ET-A receptor antagonist BQ123 at indicated concentrations for 2 hours. Soluble and insoluble cell lysate fractions were prepared as described in “Materials and Methods” and immunoblotted for β -cat. The same membrane was blotted with an anti- β -actin antibody as the loading control. The whole cell lysate was immunoprecipitated with an anti-GSK-3 β antibody and blotted with an anti-phospho-GSK-3 β (serine 9) antibody. The same membrane was blotted for total GSK-3 β as the loading control.

B. Effects of ET-1 on transcriptional activities of β -cat/Tcf in DU145 cells. The TOPflash (*filled bar*) or FOPflash (*empty bar*) reporter was transfected into DU145 cells treated with ET-1 (100 pM) and/or BQ123 (5 μ M). Normalized luciferase activities were expressed as fold activation to the FOPflash luciferase activity of untreated control cells (arbitrarily defined as 1).

C. Effects of ET-1 on transcription of *ET-1* in DU145 cells. The *ET-1* mRNA levels (*filled bar*) in DU145 cells treated with ET-1 (100 pM) and/or BQ123 (5 μ M) were determined by real-time quantitative RT-PCR 24 hours post treatment. The mRNA level of *cyclin D1* (*empty bar*) was included as a positive control. Results were normalized as fold increase to the *ET-1* or the *cyclin D1* mRNA level of untreated control cells (designated as 1) (* $P < 0.05$).

Fig. 6. β -Cat/Tcf-4 Promotes [3 H]-Thymidine Incorporation in DU145 Cells Partially via

ET-1. DU145 cells stably expressing scrambled-siRNA (Scr-siRNA), siRNA against β -cat (β -Cat-siRNA), or siRNA against *Tcf-4* (Tcf-4-siRNA) were metabolically labeled with [3 H]-thymidine in the presence or absence of 5 pM or 100 pM of ET-1. The results are expressed as

MOL19620

percentages of the [³H]-thymidine incorporation of untreated Scr-siRNA-expressing cells, which is arbitrarily defined as 100% (**P* < 0.05).

Fig. 7. ET-1 Suppresses Paclitaxel-Induced Apoptosis that is Sensitized in the β -cat- or Tcf-4-Knockdown DU145 cells.

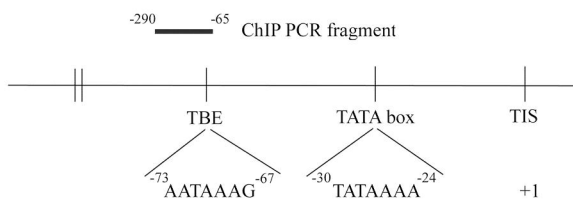
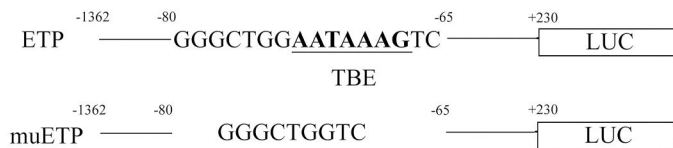
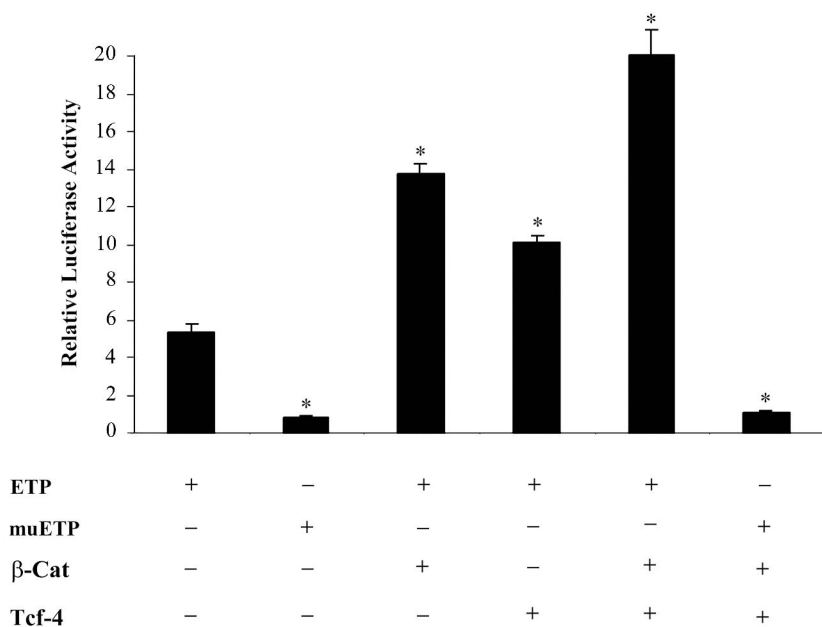
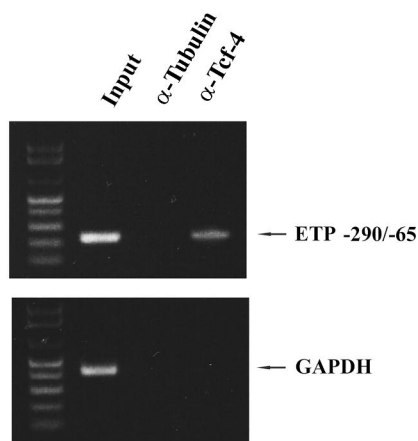
A. Effects of ET-1 on paclitaxel-induced apoptosis in the β -cat- or Tcf-4-knockdown DU145 cells. DU145 cells stably expressing scrambled-siRNA (Scr-siRNA), siRNA against β -cat (β -Cat-siRNA), or siRNA against *Tcf-4* (Tcf-4-siRNA) were treated with 5 nM of paclitaxel (PAC) in the presence or absence of ET-1 (5 pM or 100 pM) for 12 hours. The untreated cells were analyzed as control. Apoptosis/cell death was quantitated using annexin V/PI staining coupled with flow cytometry analysis. The *number* in each quadrant of the dot figures refers to the percentage of positive cells in total cells. Data shown are representative of at least two independent experiments.

B. Percentages of dead cells. Sums of percentages of early apoptotic cells (*left lower quadrant*), late apoptotic cells/dead cells (*right upper quadrant*) and necrotic cells (*right left quadrant*) are shown as percentages of dead cells in *histograms* (Mean \pm Standard Deviation).

MOL19620

Table 1. Gene Specific Oligonucleotides Used to Construct the Retroviral-RNA Interference Vectors

Target	Oligonucleotides
<i>β-cat</i>	5'-GATCCCCGACTCCAGTGGTAATCTACTTCAAGAGAGTAGATTACCACTGGAGTCTTTTTGGAAA-3'
	5'-AGCTTTTCCAAAAAGACTCCAGTGGTAATCTACTCTCTTGAAGTAGATTACCACTGGAGTCGGG-3'
<i>Tcf-4</i>	5'-GATCCCCGGAGCGACAGCTTCATATGTTCAAGAGACATATGAAGCTGTCGCTCCTTTTTGGAAA-3'
	5'-AGCTTTTCCAAAAAGGAGCGACAGCTTCATATGTCTCTTGAACATATGAAGCTGTCGCTCCGGG-3'
Scramble	5'-GATCCCCCAGTAACTGAATAGCTACCTTCAAGAGAGGTAGCTATTCAGTTACTGTTTTGGAAA-3'
	5'-AGCTTTTCCAAAAACAGTAACTGAATAGCTACCTCTCTTGAAGGTAGCTATTCAGTTACTGGGG-3'

A**B****C****D****Fig. 1**

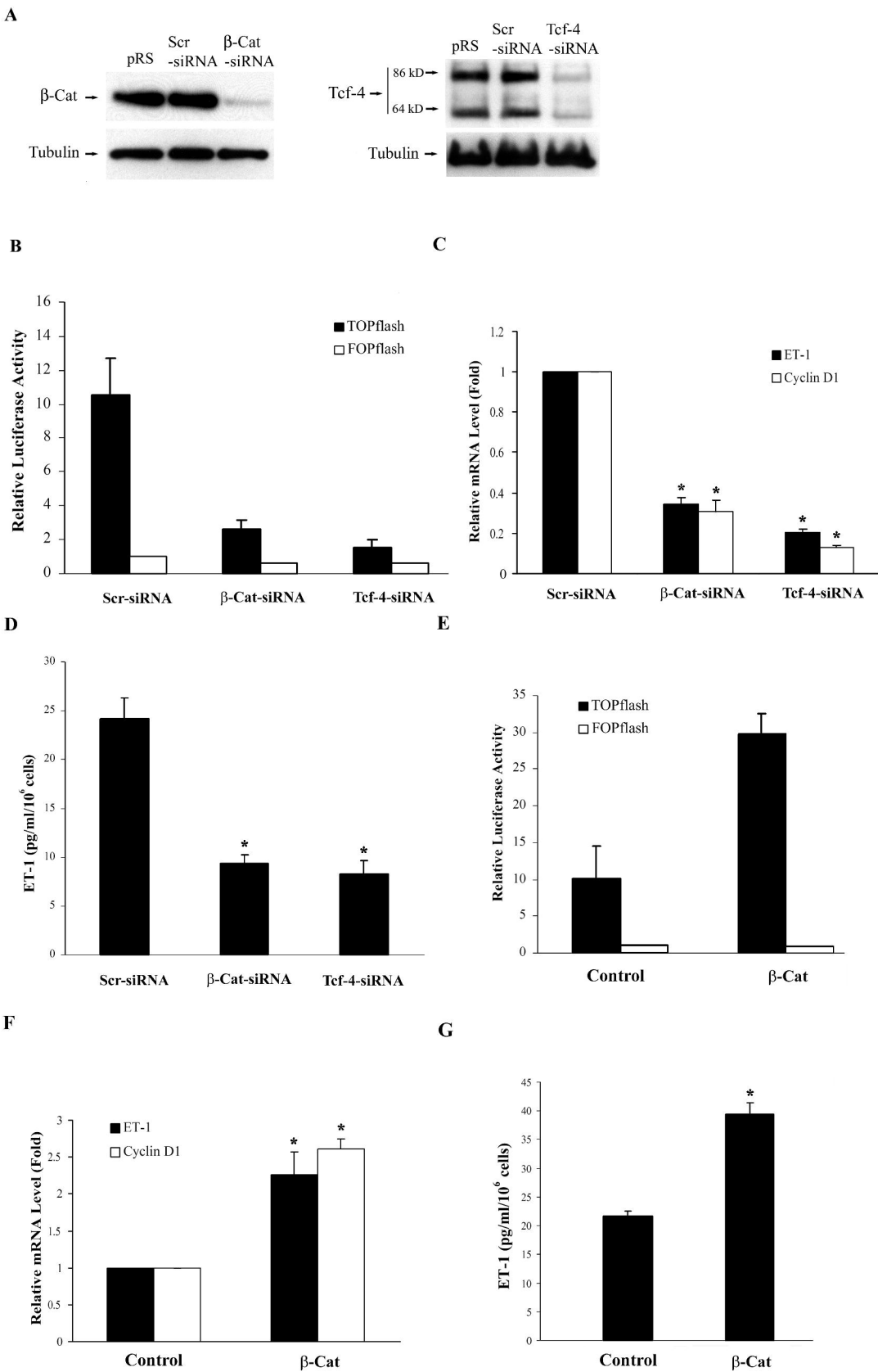
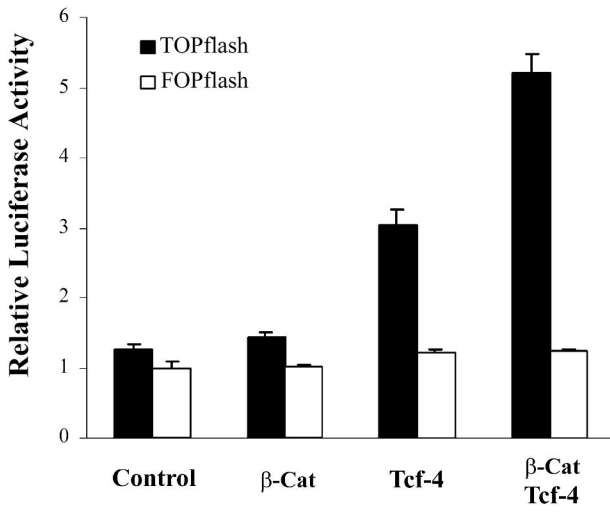
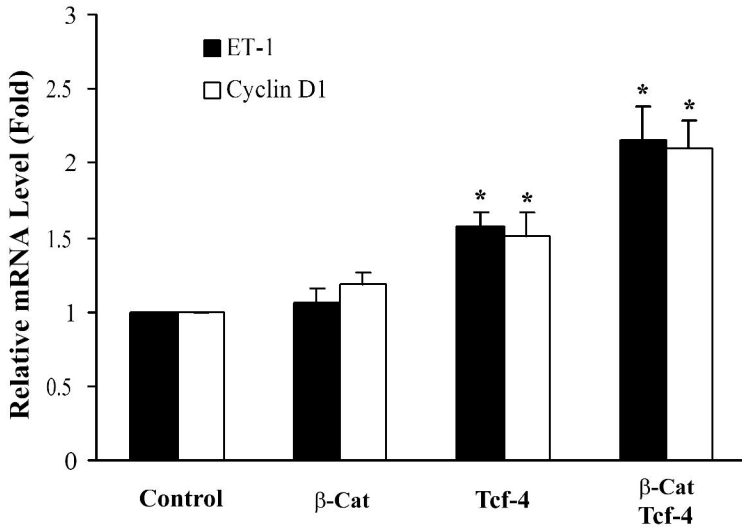
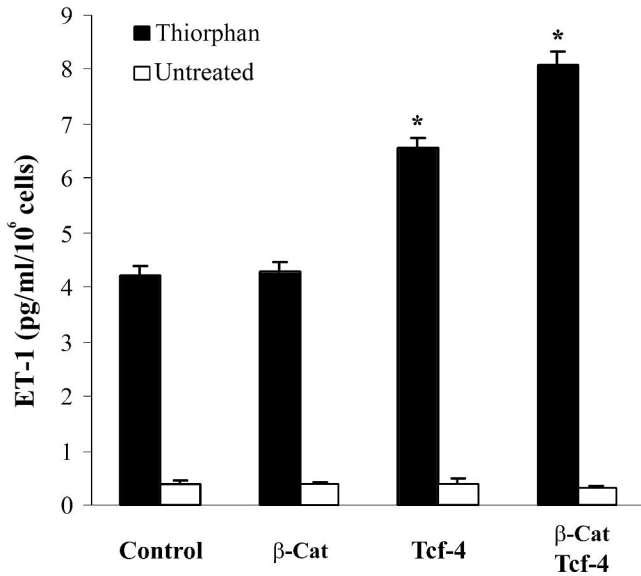


Fig. 2

A**B****C****Fig. 3**

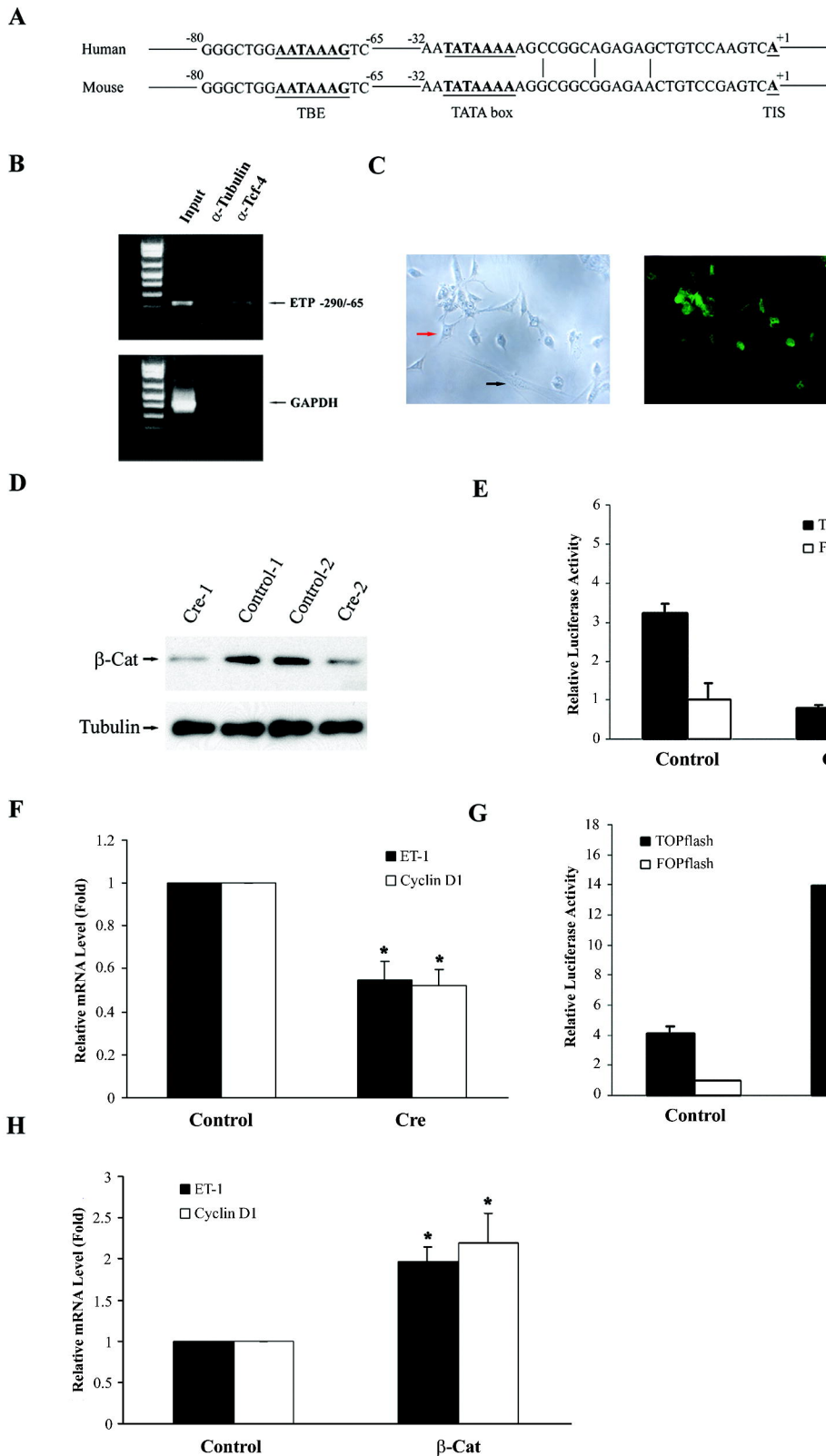
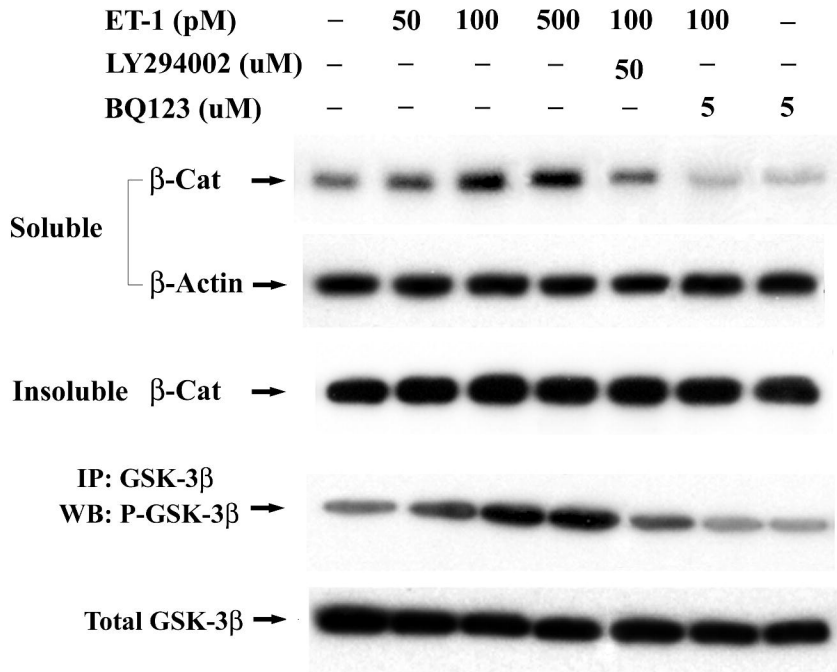
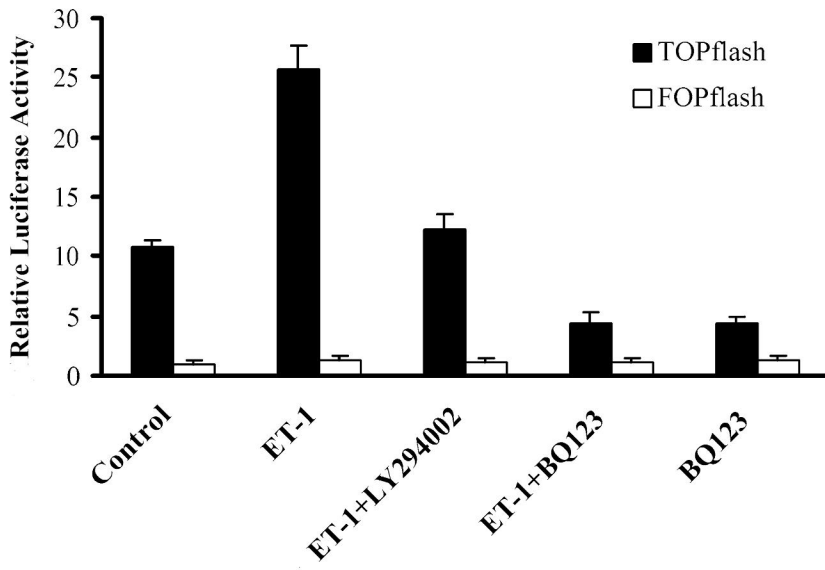


Fig. 4

A



B



C

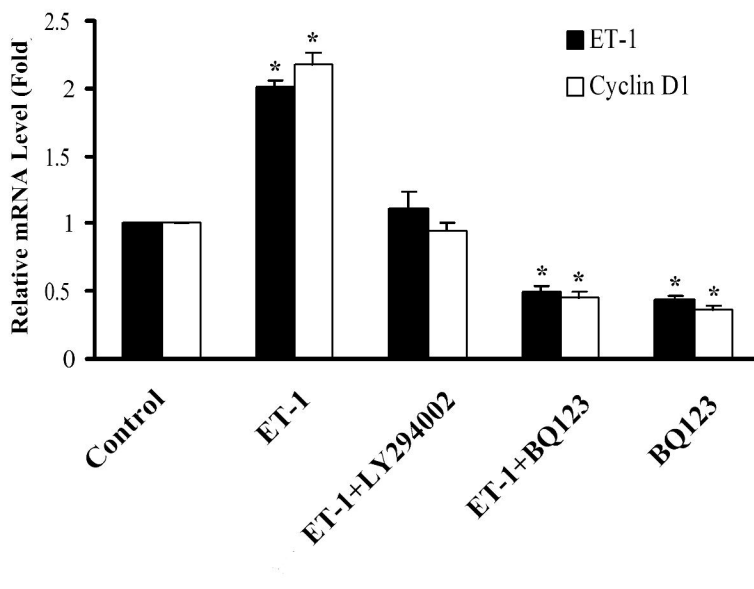


Fig. 5

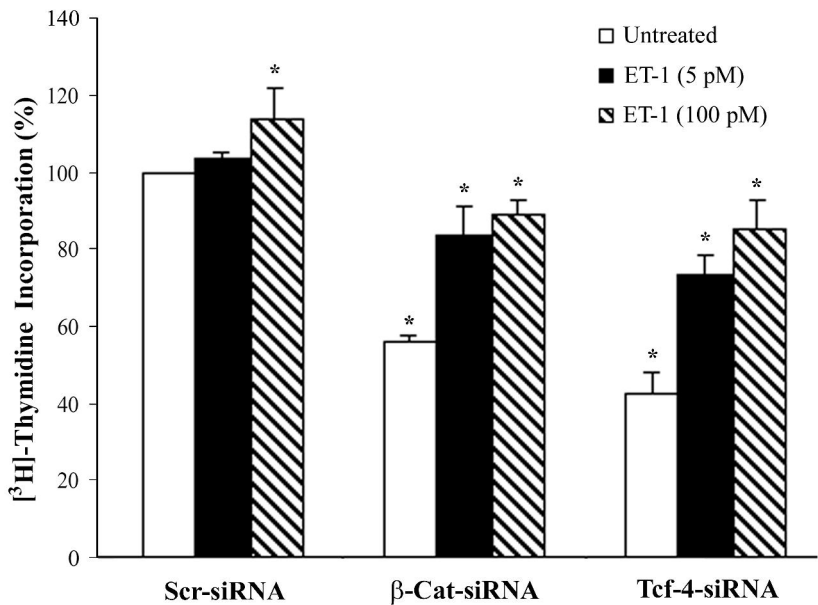
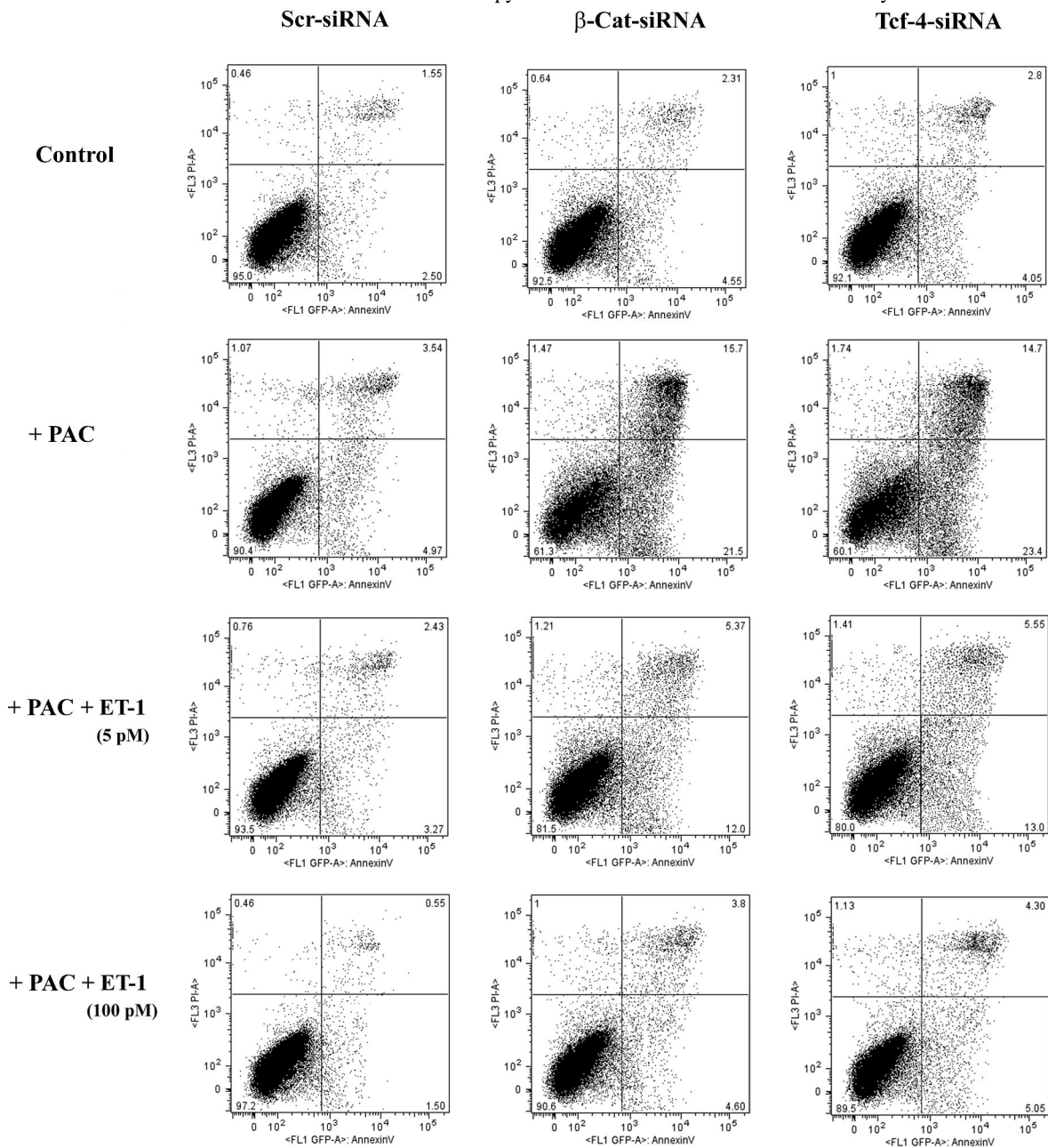


Fig. 6

A



B

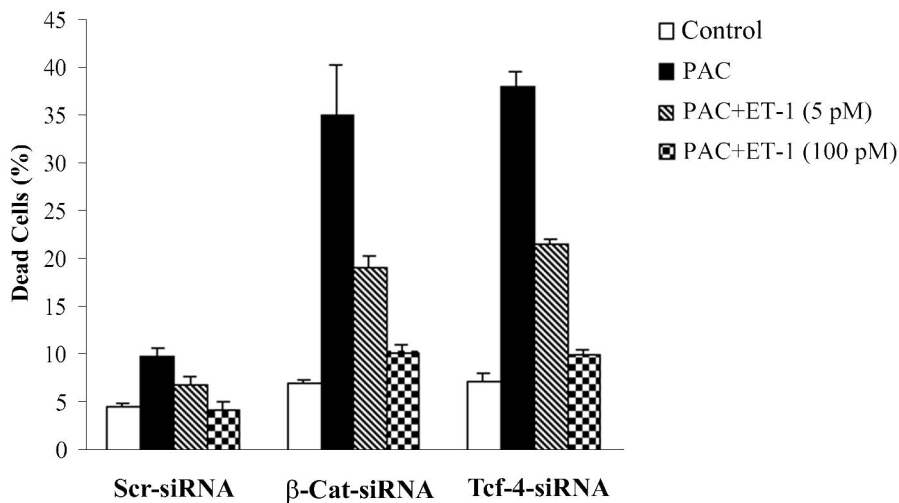


Fig. 7