

**CRITICAL ROLE FOR SPHINGOSINE KINASE-1 IN REGULATING SURVIVAL
OF NEUROBLASTOMA CELLS EXPOSED TO AMYLOID- β PEPTIDE ¹**

**Anne Gomez-Brouchet, Dimitri Pchejetski, Leyre Brizuela, Virginie Garcia, Marie-Françoise
Altié, Marie-Lise Maddelein, Marie-Bernadette Delisle, Olivier Cuvillier**

INSERM, U466, Toulouse, France (AGB, DP, VG, MFA, MBD, OC); Université Toulouse
III Paul Sabatier, Toulouse, France (AGB, DP, MLM, LBM, VG, MFA, MBD, OC); CHU
Toulouse, Service d'Anatomie et de Cytologie Pathologiques, Toulouse, France (AGB,
MBD); CNRS, Institut de Pharmacologie et de Biologie Structurale, UMR 5089, Toulouse,
France (DP, MLM, LBM, OC)

Running Title : Sphingosine kinase-1 and A β peptide

Address correspondence to :

Dr Olivier Cuvillier,

Institut de Pharmacologie et de Biologie Structurale,

CNRS UMR 5089, 31077 Toulouse Cedex 4, France ;

Tel : (+33) 561.17.55.13; Fax : (+33) 561.17.58.71;

E-mail : olivier.cuvillier@ipbs.fr

Number of text pages :

Number of tables : 0

Number of figures : 7

Number of references : 52

Number of words in the abstract : 194

Number of words in the introduction : 623

Number of words in the discussion : 881

Nonstandard abbreviations : A β peptide, Amyloid β peptide; sphingosine kinase-1, SphK1.

ABSTRACT

We examined the role of sphingosine kinase-1 (SphK1), a critical regulator of the ceramide/sphingosine 1-phosphate (S1P) biostat, in the regulation of death and survival of SH-SY5Y neuroblastoma cells in response to A β peptide (25-35). Upon incubation with A β , SH-SY5Y cells displayed a marked down-regulation of SphK1 activity coupled with an increase in the ceramide/S1P ratio followed by cell death. This mechanism was redox-sensitive as N-acetylcysteine totally abrogated the down-regulation of SphK1 activity and strongly inhibited A β -induced cell death. SphK1 overexpression impaired the cytotoxicity of A β while SphK1 silencing by RNA interference mimicked A β -induced cell death hence establishing a critical role for SphK1. We further demonstrated that SphK1 could mediate the well-established cytoprotective action of IGF-I against A β toxicity. A dominant-negative form of SphK1 or its pharmacological inhibition not only abrogated IGF-I-triggered stimulation of SphK1 but also hampered IGF-I protective effect. Similarly to IGF-I, the neuroprotective action of TGF- β 1 was also dependent on SphK1 activity as activation of SphK1 as well as cell survival were impeded by a dominant-negative form of SphK1. Collectively, these results provide the first illustration of SphK1 role as a critical regulator of death and survival of A β -treated cells.

INTRODUCTION

The sphingolipid metabolites ceramide and sphingosine 1-phosphate (S1P) have received much attention in the last decade as key regulators of cell death and survival (Hannun and Obeid, 2002; Spiegel and Milstien, 2003). Ceramide mediates a wide array of stress signals leading to growth arrest or cell death while S1P exerts prosurvival capabilities by antagonizing ceramide effects. The opposing directions of ceramide- and S1P-mediated signaling gave birth to the concept of a ceramide/S1P biostat and the assumption that the balance between these two sphingolipids could determine whether a cell survives or dies (Cu villier et al., 1996). The intracellular balance between ceramide and S1P is strongly regulated by sphingosine kinase-1 (SphK1), the enzyme that phosphorylates sphingosine (the catabolite of ceramide) to form S1P. When overexpressed, SphK1 promotes cell survival in response to stresses that increase ceramide content (Bonhoure et al., 2006; Edsall et al., 2001; Nava et al., 2002; Olivera et al., 1999; Pchejetski et al., 2005; Pchejetski et al., 2007) by shifting the ceramide/S1P biostat towards S1P. On the contrary, SphK1 down-regulation is associated with an accumulation of ceramide and has been correlated with cell death induced by anticancer treatments (Bonhoure et al., 2006; Nava et al., 2000; Pchejetski et al., 2005; Taha et al., 2004).

The amyloid- β peptide (A β), the main constituent of amyloid plaques, is believed to play a causative role in the neurodegenerative process occurring in Alzheimer's disease (Roher et al., 1993; Selkoe, 2001). Although A β -mediated neuronal cell death demonstrates biochemical characteristics of apoptosis, the molecular mechanism underlying A β toxicity remains largely undefined. Noteworthy, increased levels of ceramide have been found in the brain of Alzheimer's disease patients (Cutler et al., 2004; Han et al., 2002; Sato et al., 2005), thereby implying that ceramide accumulation could contribute to Alzheimer's disease pathogenesis. In addition A β toxicity was recently shown to be linked with ceramide generation both in cell

culture models (Ayasolla et al., 2004; Cutler et al., 2004; Jana and Pahan, 2004; Lee et al., 2004; Yang et al., 2004; Zeng et al., 2005) and in animal model (Alessenko et al., 2004).

Survival of neurons is dependent on extracellular signals from neurotrophic factors and related factors with trophic activity. Compelling data have revealed the potential involvement of insulin-like growth factor I (IGF-I) in the Alzheimer's disease pathophysiology. Low serum levels of IGF-I is correlated with premature brain amyloidosis and IGF-I has been found to regulate A β clearance from the brain (Carro and Torres-Aleman, 2004; Carro et al., 2002). Furthermore, IGF-I prevents A β -induced neuronal cell death (Dore et al., 1997; Niikura et al., 2001) including in SH-SY5Y cells (Wei et al., 2002). The TGF- β 1 peptide growth factor also protects neurons from a variety of insults (Flanders et al., 1998) including A β (Chao et al., 1994; Prehn et al., 1996; Ren and Flanders, 1996; Ren et al., 1997). Levels of TGF- β 1 are decreased in human Alzheimer's disease serum (De Servi et al., 2002) and TGF- β receptor expression reduced (Tesseur et al., 2006). Importantly, *via* genetic manipulation of TGF- β 1 signaling, it was recently demonstrated that reduction of TGF- β 1 signaling in neurons of transgenic mice caused age-dependent neurodegeneration and promoted Alzheimer's disease-like pathology in a mouse model for Alzheimer's disease (Tesseur et al., 2006).

Herein, we report that A β treatment of SH-SY5Y cells triggered a strong inhibition of SphK1 activity coupled with an elevation of the ceramide/S1P biostat, in a redox-sensitive fashion. Knocking-down SphK1 by an RNA interference strategy mimicked the effects of A β , whereas its overexpression rendered cells resistant to A β . We further established that SphK1 could transduce the prosurvival action of both IGF-I and TGF- β 1. Overall this study strongly suggests that SphK1 could play a critical role in the regulation of A β -induced neuronal cell death and the neuroprotective effect of IGF-I and TGF- β 1.

MATERIALS AND METHODS

Cell lines - SH-SY5Y cells (DSMZ, Braunschweig, Germany) were cultured in DMEM containing 10% fetal bovine serum (FBS) under a humidified atmosphere of 5% CO₂ at 37°C. Retinoic acid was used to induce neuronal differentiation (Fig. 1A) similar to primary cell cultures (Datki et al., 2003; Uberti et al., 1997) which was controlled by immunohistochemistry with MAP2 (Sigma-Aldrich) and anti-tau Alz50 (gift from Dr. Peter Davies) antibodies. FLAG epitope-tagged wild-type human SphK1 (hSphK1) cDNA and hSphK1 containing the G82D mutation, subcloned into pcDNA3* vector (Pitson et al., 2000), were used for stable transfection in SH-SY5Y cells. Mass pools of stable transfectants were selected in growth medium containing 0.4 mg/ml G418. Empty vector-, wild-type hSphK1- and hSphK1^{G82D}-transfected SH-SY5Y cells were designated SH-SY5Y/Neo, SH-SY5Y/SphK1, and SH-SY5Y/SphK1-DN, respectively. All experiments were conducted in the presence of 2% FBS.

Materials - Medium, serum, and antibiotics were obtained from Invitrogen. A β peptides (25-35) and (35-25) were from Bachem (Weil am Rhein, Germany) and freshly solubilized in water before treatment. Thioflavine T fluorescent binding and Congo Red spectroscopic assay indicated a high β -sheets content characteristic of amyloid aggregates (data not shown). *E coli* diacylglycerol kinase, human IGF-I, human TGF- β 1, CA074-Me and sphingosine kinase inhibitor (2-(p-hydroxyanilino)-4-(p-chlorophenyl)thiazole; CAS number 312636-16-1) inhibitor were from Calbiochem. [γ -³²P]-ATP (3,000 mCi/mmol) was purchased from Perkin-Elmer, and silica gel 60 high-performance TLC (Partisil® LK6D) plates were from Whatman International. N-acetylcysteine (NAC), hydrogen peroxide (H₂O₂) and retinoic acid were from Sigma-Aldrich.

Cell viability and staining of apoptotic nuclei - Cell viability was measured using the MTT dye reduction assay as previously described (Cuvillier and Levade, 2001). Apoptosis was

visually assessed by double staining cells with Syto 13 (1 μ M) and PI (6 μ g/ml) for 5 min at 37°C (Pchejetski et al., 2005). The cells were then examined with a Leica fluorescent microscope and apoptotic cells distinguished by condensed, fragmented nuclear regions.

Western blot analysis - Western blotting was carried out as previously reported (Cuvillier et al., 1999) Mouse anti-FLAG (Sigma) and mouse anti- β -actin (Sigma) were used as primary antibodies. Proteins were visualized by ECL detection system (Pierce) using anti-mouse HRP-conjugated IgG (Bio-Rad).

SphKs assay and Mass measurements of sphingolipids - SphK1 activity was determined in the presence of sphingosine prepared with Triton X-100 (final concentration 0.25%) whereas for assaying SphK2 activity, sphingosine was prepared in bovine serum albumin (final concentration 4 mg/ml) and 1M KCl a condition in which SphK2 is optimal and SphK2 inhibited (Maceyka et al., 2005). Ceramide and S1P levels were measured and normalized to protein content (Edsall et al., 2000).

RNA interference - Transient interference was achieved by double-stranded SphK1-specific siRNA 5'-GGGCAAGGCCUUGCAGCUCd(TT)-3' and 5'-GAGCUGCAAGGCCUUGCCCd(TT)-3' or scrambled siRNA (Qiagen) using OligofectAMINE reagent (Invitrogen) as previously reported (Pchejetski et al., 2005). Briefly, 75 pM siRNA were complexed with a 1:125 final dilution of OligofectAMINE (Invitrogen) reagent and applied to 1.10^5 cells in a final volume of 250 μ l Opti-MEM (Invitrogen) without FBS or antibiotics. After incubation for 4 h at 37°C under 5% CO₂, 150 μ l DMEM with 30% FBS was added. 20 hours later the medium was changed to 1 ml DMEM with 10% FBS. Cell viability assays and SphK1 activity determinations were performed daily.

Statistical analysis - The statistical significance of differences between the means of two groups was evaluated by unpaired Student's *t* test. All statistical tests were two-sided and the

level of significance was set at $P < 0.1$. Calculations were performed using InStat (GraphPad Software).

RESULTS

The A β 25-35 peptide-induced cell death is associated with down-regulation of sphingosine kinase-1 activity

As previously reported (Arias et al., 2005; Li et al., 1996; Luetjens et al., 2001; Olivieri et al., 2001; Pettifer et al., 2004; Wei et al., 2002), A β 25-35 peptide induced a strong loss of cell viability in SH-SY5Y cells with an approximate EC₅₀ = 10 μ M at 24 h (Fig. 1B). In contrast, the 10 μ M reverse A β 35-25 peptide treatment was not toxic to SH-SY5Y cells (Fig. 1B) thus confirming the specificity to the observed toxic effects of A β 25-35 peptide. Syto 13/propidium iodide staining revealed that the loss of cell viability observed in A β 25-35 treated cells could be attributed to apoptosis (Fig. 1B, *inset*), as confirmed by flow cytometry analysis with Annexin V-propidium iodide (data not shown). Previous studies have recently suggested that A β -induced cell death could be mediated by the proapoptotic sphingolipid metabolite ceramide (Jana and Pahan, 2004; Lee et al., 2004; Yang et al., 2004), we thus asked whether not only ceramide but other bioactive sphingolipids could be implicated in A β -induced toxicity. As already reported (Jana and Pahan, 2004; Lee et al., 2004; Yang et al., 2004), A β 25-35 treatment resulted in ceramide increase that was detectable as early as 45 min of incubation with a peak at around 3 hours (Fig. 1D). Of interest, SphK1 activity was strongly inhibited as soon as 45 min with over 30% decrease within 3 hours of treatment (Fig. 1C). The SphK1 inhibition was paralleled by a marked decrease in S1P content (Fig. 1E). Of note, there were no changes in the levels of ceramide and S1P in SH-SY5Y cells incubated with reverse A β 35-25 (data not shown) suggesting that down-regulation of the ceramide/S1P biostat was only seen in cells undergoing apoptosis. Treatment with A β 25-35 did not alter significantly SphK2 activity (6.3 ± 1.9 pmol/mg/min) - the other sphingosine kinase isoform - whose optimal basal activity (6.8 ± 1.2 pmol/mg/min) was about 5-fold lower than optimal SphK1 (31.1 ± 2.3 pmol/mg/min).

Recently ceramide generation during A β -induced cell death has been shown to involve changes in the cellular redox state and/or glutathione metabolism that controls neutral sphingomyelinase activation (Jana and Pahan, 2004; Lee et al., 2004; Yang et al., 2004). Therefore we asked whether the glutathione precursor N-acetylcysteine (NAC) could also impact SphK1 activity. NAC totally hampered A β 25-35-induced SphK1 down-regulation (Fig. 1F) and prevented cytotoxicity (Olivieri et al., 2001) thus implying a redox-sensitive mechanism for A β 25-35-mediated inhibition of SphK1. After having established that A β 25-35-induced SphK1 inhibition was inhibited by antioxidant NAC, it was of interest to determine whether addition of exogenous H₂O₂ could mimic the effect of A β 25-35 on SphK1 activity. As shown in Fig. 2B, addition of H₂O₂ led to a strong inhibition of SphK1. Of note, pretreatment with NAC could fully prevent SphK1 inhibition as well as cytotoxicity (Fig. 2 B).

Sphingosine kinase-1 overexpression inhibits A β 25-35 peptide-induced cell death

Because an inhibition of SphK1 is observed during A β 25-35 peptide-induced cell death, transfection of SH-SY5Y with this enzyme might render these cells resistant to A β toxicity. Transfection efficiency was verified by Western blotting with FLAG antibody (Fig. 3A). The SphK1 activity of SH-SY5Y overexpressing SphK1 (Fig. 3B) was increased to ~ 950 pmol/mg protein/min (i.e., ~ 30-fold higher compared with that of empty vector-transfected cells). This increase of SphK1 activity led to a shift in the sphingolipid balance and notably in the ceramide to S1P ratio. The enforced expression of SphK1 in SH-SY5Y diminished the level of total intracellular ceramide in resting cells by ~ 25%. The basal S1P level was increased by ~ 50% (Fig. 3B, *inset* and *right panel*). The role of SphK1 inhibition in cell death induced by A β 25-35 peptide was confirmed by cell viability assays, which showed that SphK1-overexpressing SH-SY5Y were ~ 40% more resistant to A β 25-35 peptide than SH-SY5Y transfected with empty vector (Fig. 3C). The cytoprotective effect of SphK1

overexpression was illustrated by a significant decrease of the ceramide to S1P ratio (Fig. 3D). In addition, SphK1 overexpression could block the loss of cell viability of SH-SY5Y cells treated with H₂O₂ (cell viability = 59.5 ± 3.9 % in SH-SY5Y/Neo vs. 85.5 ± 3.6 % in SH-SY5Y SphK1, *P*<0.001).

The manipulation of the ceramide/sphingosine 1-phosphate rheostat by sphingosine kinase-1 silencing promotes cell death

To establish proof of concept that SphK1 down-regulation has a critical effectiveness on the cytotoxicity of A β 25-35, we examined the effects of siRNA targeted against SphK1 (Bonhoure et al., 2006; Pchejetski et al., 2005; Pchejetski et al., 2007) on SphK1 activity and SH-SY5Y viability. SphK1 activity was strongly decreased as compared with scrambled siRNA (Fig. 4A). This was further illustrated by reduction in S1P content (Fig. 4A, *inset*). Western blot analysis revealed a significant down-regulation of the SphK1 protein in SH-SY5Y/SphK1 cells after siRNA treatment for 72 hours (Fig. 4B). The decrease in SphK1 activity was accompanied by an increase in the ceramide to S1P ratio (Fig. 4C) and a substantial loss of cell viability (Fig. 4D). These results clearly indicate that SphK1 is required for cell survival and that the lowering of SphK1 may be crucial to the execution of cell death as recently reported in breast (Taha et al., 2006) and prostate adenocarcinoma (Pchejetski et al., 2005), leukemia cells (Bonhoure et al., 2006; Taha et al., 2004), as well as in cardiomyocytes (Pchejetski et al., 2007).

Sphingosine kinase-1 mediates the prosurvival effects of IGF-I

The capability of IGF-I to protect from A β toxicity is well established (Dore et al., 1997; Wei et al., 2002). In agreement with previous reports (Wei et al., 2002), incubation of SH-SY5Y cells with 75 ng/ml IGF-I had a pronounced cytoprotective impact towards A β 25-35 peptide (Fig. 5A). Since SphK1 overexpression enhanced survival of SH-SY5Y in response to A β 25-35 peptide (Fig. 3C), it was of interest to determine whether SphK1 could be involved

in a survival pathway such as the IGF-I one. Figure 5B shows that IGF-I markedly and rapidly up-regulated SphK1 activity (maximum within 60 min of incubation). This increase of SphK1 activity translated into a shift in the sphingolipid balance towards S1P : the level of ceramide was decreased while S1P level was strongly increased (Fig. 5B, *inset*). To further evaluate the contribution of SphK1 in the cytoprotective effect of IGF-I, we generated SH-SY5Y cells overexpressing SphK1^{G82D}, a catalytically inactive form of SphK1. In contrast to SH-SY5Y/SphK1 cells (Fig. 3B), overexpression of SphK1^{G82D} produced no detectable increase in basal SphK1 activity when compared to empty vector-transfected cells (data not shown). Although this mutation did not have any effect on basal SphK1 activity, it did noticeably prevent its stimulation by IGF-I (Fig. 6A) indicating that the mutated SphK1 could function as a dominant-negative (Bonhoure et al., 2006; Pitson et al., 2000). We next evaluated the prosurvival impact IGF-I in SH-SY5Y/SphK1^{G82D} cells when challenged with A β 25-35 peptide. Only a partial resistance to A β was found (Fig. 6B, left panel), hence suggesting that SphK1 was to a large extent accounting for the cytoprotective effect of IGF-I (Fig. 6B, left panel vs. Fig. 6C). Furthermore, the role of SphK1 was also examined by performing experiments with 2-(*p*-hydroxyanilino)-4-(*p*-chlorophenyl)thiazole, known as the most selective SphK1 pharmacological inhibitor available (French et al., 2003). Figure 6C shows that this SphK1 inhibitor could significantly block the cytoprotective effect of IGF-I in a dose-dependent fashion, in a similar manner to the SphK1-DN cell line model (Fig. 6B). We also investigated whether siRNA targeted against SphK1 could have an impact on the cytoprotective effect of IGF-I against A β . The prosurvival effect of IGF-I was significantly reduced in SphK1 siRNA-treated SH-SY5Y cells with respect to scrambled siRNA-treated cells (Fig. 6C). Collectively, our results suggest that IGF-I protected against A β -induced cell death by markedly upregulating SphK1.

The TGF- β 1 protective effect against A β peptide cytotoxicity involves sphingosine kinase-1 activation

A number of studies have established that peptide growth factor TGF- β 1 can protect against the damaging effects of A β in human fetal brain cell cultures (Chao et al., 1994), in primary hippocampal neurons (Prehn et al., 1996; Ren and Flanders, 1996), in differentiated human teratocarcinoma cells (Ren et al., 1997), and in neuroblastoma cell line models (Ren and Flanders, 1996). Pre-treatment of SH-SY5Y/Neo cells with 10 ng/ml TGF- β 1 led to a pronounced cytoprotective effects towards A β 25-35 peptide (Fig. 7A) in agreement with previous studies (Ren and Flanders, 1996). Similar to IGF-I, we found a weaker protection from A β 25-35 peptide in SH-SY5Y/SphK1^{G82D} cells co-incubated with TGF- β 1 (Fig. 7A) and a slightly higher protection in SH-SY5Y cells overexpressing SphK1 (Fig. 7A), implying that SphK1 was a key regulator for the cytoprotective effect of TGF- β 1. Recently, it has been reported that TGF- β 1 could increase SphK1 activity in dermal fibroblasts (Yamanaka et al., 2004). We therefore asked whether SphK1 activity could be stimulated in our cell system in response to TGF- β 1. As shown in Figure 6B, SphK1 was found rapidly activated after exposure of SH-SY5Y/Neo to TGF- β 1. Interestingly, in contrast to SH-SY5Y/Neo, the dominant-negative SH-SY5Y/SphK1^{G82D} cells did not display SphK1 activation upon TGF- β 1 treatment (Fig. 7B, right panel). The increase of SphK1 activity in SH-SY5Y/Neo cells led to a shift in the sphingolipid balance towards S1P : the level of ceramide was slightly decreased while the S1P level was increased by almost 50% (Fig. 7B). As anticipated, there were no significant changes in the levels of ceramide and S1P in the dominant-negative SH-SY5Y/SphK1^{G82D} cells after treatment with TGF- β 1 (Fig. 7C).

DISCUSSION

The major finding of the present study relates to the critical role of SphK1 isoform in regulating cell survival against A β -induced toxicity. SphK1 is a key enzyme in the sphingolipid metabolism because it serves the dual function of regulating ceramide and S1P level, two sphingolipids with opposite function on cell survival (Cuvillier et al., 1996).

Although the mechanism by which A β -peptides induce neuronal loss is poorly understood, a wealth of reports support the notion that ceramide could be a mediator of A β -induced toxicity. Ceramide generation by a n-SMase-mediated sphingomyelin degradation in response to A β treatment was indeed described both *in vitro* and *in vivo* (Alessenko et al., 2004; Ayasolla et al., 2004; Cutler et al., 2004; Jana and Pahan, 2004; Lee et al., 2004; Yang et al., 2004; Zeng et al., 2005). The generation of ceramide during A β -induced neuronal cell death is instrumental as for its blockade by n-SMase antisense oligonucleotides, pharmacological n-SMase inhibitors or antioxidants such as the glutathione (GSH) precursor NAC, diphenyliodonium can hinder the cytotoxic effect of A β -peptides (Jana and Pahan, 2004; Lee et al., 2004; Yang et al., 2004). It has been hypothesized that the decrease in GSH level observed after A β exposure (Muller et al., 1997; Pereira et al., 1999) could activate n-SMase therefore leading to ceramide production (Lee et al., 2004). In this study, we establish that not only the proapoptotic ceramide is produced during A β -induced neuronal cell death, but the levels of the prosurvival S1P are diminished due to SphK1 down-regulation thus tilting the ceramide/S1P biostat towards ceramide as previously observed in tumor cells after anticancer treatments (Bonhoure et al., 2006; Nava et al., 2000; Pchejetski et al., 2005; Taha et al., 2004). There was up to near 3-fold increase in the ceramide/S1P ratio at 3-hour incubation time (calculated from the relative amounts of ceramide and S1P levels shown in Fig. 1D and E, respectively; 1.75:0.65).

Oxidative stress – which is suggested to play a central role in A β -induced toxicity and

Alzheimer's disease – appeared to be instrumental for mediating SphK1 down-regulation by A β peptide as the GSH precursor NAC could impede SphK1 inhibition. Moreover, direct addition of H₂O₂ also triggered SphK1 inhibition that could be blocked by NAC and H₂O₂-induced cell death was overcome by SphK1 overexpression. Such a role for oxidative stress in controlling SphK1 activity has been recently reported in cardiomyocytes after ischemia/reperfusion (Pchejetski et al., 2007). With respect to the significance of SphK1 inhibition during A β -induced cell death, one can anticipate it as a mean to make sure that the ceramide produced - in response to A β - will not give rise to augmented pro-survival S1P. It should be noted that SphK1 inhibition could be seen after treatment of leukemic cells with C₂-ceramide (Bonhoure et al., 2006), a cell permeable analogue of natural ceramide, which is known to be metabolized to produce natural long-chain ceramides, when added to the cells (Abe et al., 1996). Interestingly, C₂-ceramide-induced cell death in SH-SY5Y cells can be blocked by SphK1 overexpression (data not shown).

As a proof of the strategic role for SphK1 in regulating A β -induced neuronal cell death, our study showed that SphK1 enforced expression markedly inhibited the cytotoxicity of the A β peptide. These results are in line with previous reports establishing that SphK1 overexpression can offer protection against proapoptotic stimuli including serum withdrawal, short-chain ceramides or anticancer drugs (Bonhoure et al., 2006; Edsall et al., 2001; Nava et al., 2002; Olivera et al., 1999; Pchejetski et al., 2005). Enhanced SphK1 activity is known to reduce ceramide levels by driving ceramide metabolism toward the generation of S1P, which blocks the apoptotic machinery (Bonhoure et al., 2006; Pchejetski et al., 2005; Pchejetski et al., 2007). We further confirmed the specific role of SphK1 by showing that siRNA against SphK1 induced a strong loss of cell viability thus implying that SphK1 was required for survival of SH-SY5Y cells and that its inhibition was a key feature in apoptosis. Loss of SphK1 has been recently shown to activate the intrinsic pathway of apoptosis through

enhanced oligomerization of Bax in the mitochondrial membrane, resulting in cytochrome c release and downstream caspase activation (Taha et al., 2006).

Last, our studies not only demonstrated that SphK1 inhibition was required for A β -toxicity in SH-SY5Y cells but also established for the first time that SphK1 was a major transducer of two important growth factors, IGF-I and TGF- β 1 whose neuroprotective effects against A β are well recognized (Carro and Torres-Aleman, 2004; Flanders et al., 1998; Tesseur et al., 2006). Both IGF-I and TGF- β 1 triggered a rapid stimulation of SphK1 activity, hence tipping the ceramide/S1P balance toward S1P which in turn could protect SH-SY5Y cells from A β -toxicity. The activation of SphK1 was essential for the action of IGF-I and TGF- β 1 because a dominant-negative form of SphK1 or its pharmacological inhibition or knocking-down by RNAi strategy could markedly impede their cytoprotective effect against A β peptide.

Collectively, this report shows for the first time the implication of SphK1 in the regulation of death and survival of A β -treated neuronal cells, highlighting the notion that the ceramide/S1P biostat could be a regulator of life and death of neurons. The capability of SphK1 to promote neuronal survival suggests that analogs of S1P or stimulators of SphK1 activity might provide a strategy toward forestalling the symptoms of Alzheimer's disease.

ACKNOWLEDGMENTS

We thank Dr Brian Wattenberg (Hanson Institute, Institute of Medical and Veterinary Science, Adelaide, Australia) for the plasmids encoding FLAG epitope-tagged wild-type hSphK1 and G82D hSphK1; Dr Peter Davies (Albert Einstein College of Medicine, Bronx, NY, USA) for the anti-Tau antibody.

REFERENCES

- Abe A, Shayman JA and Radin NS (1996) A novel enzyme that catalyzes the esterification of N-acetylsphingosine. *J Biol Chem* **271**:14383-14389.
- Alessenko AV, Bugrova AE and Dudnik LB (2004) Connection of lipid peroxide oxidation with the sphingomyelin pathway in the development of Alzheimer's disease. *Biochem Soc Trans* **32**(Pt 1):144-146.
- Arias E, Gallego-Sandin S, Villarroya M, Garcia AG and Lopez MG (2005) Unequal neuroprotection afforded by the acetylcholinesterase inhibitors galantamine, donepezil, and rivastigmine in SH-SY5Y neuroblastoma cells: role of nicotinic receptors. *J Pharmacol Exp Ther* **315**(3):1346-1353.
- Ayasolla K, Khan M, Singh AK and Singh I (2004) Inflammatory mediator and beta-amyloid (25-35)-induced ceramide generation and iNOS expression are inhibited by vitamin E. *Free Radic Biol Med* **37**(3):325-338.
- Bonhoure E, Pchejetski D, Aouali N, Morjani H, Levade T, Kohama T and Cuvillier O (2006) Overcoming MDR-associated chemoresistance in HL-60 acute myeloid leukemia cells by targeting sphingosine kinase-1. *Leukemia* **20**:95-102.
- Carro E and Torres-Aleman I (2004) The role of insulin and insulin-like growth factor I in the molecular and cellular mechanisms underlying the pathology of Alzheimer's disease. *Eur J Pharmacol* **490**(1-3):127-133.
- Carro E, Trejo JL, Gomez-Isla T, LeRoith D and Torres-Aleman I (2002) Serum insulin-like growth factor I regulates brain amyloid-beta levels. *Nat Med* **8**(12):1390-1397.
- Chao CC, Hu S, Kravitz FH, Tsang M, Anderson WR and Peterson PK (1994) Transforming growth factor-beta protects human neurons against beta-amyloid-induced injury. *Mol Chem Neuropathol* **23**(2-3):159-178.
- Cutler RG, Kelly J, Storie K, Pedersen WA, Tammara A, Hatanpaa K, Troncoso JC and Mattson MP (2004) Involvement of oxidative stress-induced abnormalities in ceramide and cholesterol metabolism in brain aging and Alzheimer's disease. *Proc Natl Acad Sci U S A* **101**(7):2070-2075.
- Cuvillier O and Levade T (2001) Sphingosine 1-phosphate antagonizes apoptosis of human leukemia cells by inhibiting release of cytochrome c and Smac/DIABLO from mitochondria. *Blood* **98**(9):2828-2836.

- Cuvillier O, Mayhew E, Janoff AS and Spiegel S (1999) Liposomal ET-18-OCH(3) induces cytochrome c-mediated apoptosis independently of CD95 (APO-1/Fas) signaling. *Blood* **94**(10):3583-3592.
- Cuvillier O, Pirianov G, Kleuser B, Vanek PG, Coso OA, Gutkind S and Spiegel S (1996) Suppression of ceramide-mediated programmed cell death by sphingosine-1-phosphate. *Nature* **381**(6585):800-803.
- Datki Z, Juhasz A, Galfi M, Soos K, Papp R, Zadori D and Penke B (2003) Method for measuring neurotoxicity of aggregating polypeptides with the MTT assay on differentiated neuroblastoma cells. *Brain Res Bull* **62**(3):223-229.
- De Servi B, La Porta CA, Bontempelli M and Comolli R (2002) Decrease of TGF-beta1 plasma levels and increase of nitric oxide synthase activity in leukocytes as potential biomarkers of Alzheimer's disease. *Experimental gerontology* **37**(6):813-821.
- Dore S, Kar S and Quirion R (1997) Insulin-like growth factor I protects and rescues hippocampal neurons against beta-amyloid- and human amylin-induced toxicity. *Proc Natl Acad Sci U S A* **94**(9):4772-4777.
- Edsall L, Vann L, Milstien S and Spiegel S (2000) Enzymatic method for measurement of sphingosine 1-phosphate. *Methods in enzymology* **312**:9-16.
- Edsall LC, Cuvillier O, Twitty S, Spiegel S and Milstien S (2001) Sphingosine kinase expression regulates apoptosis and caspase activation in PC12 cells. *J Neurochem* **76**(5):1573-1584.
- Flanders KC, Ren RF and Lippa CF (1998) Transforming growth factor-betas in neurodegenerative disease. *Prog Neurobiol* **54**(1):71-85.
- French KJ, Schrecengost RS, Lee BD, Zhuang Y, Smith SN, Eberly JL, Yun JK and Smith CD (2003) Discovery and evaluation of inhibitors of human sphingosine kinase. *Cancer Res* **63**(18):5962-5969.
- Han X, D MH, McKeel DW, Jr., Kelley J and Morris JC (2002) Substantial sulfatide deficiency and ceramide elevation in very early Alzheimer's disease: potential role in disease pathogenesis. *J Neurochem* **82**(4):809-818.
- Hannun YA and Obeid LM (2002) The Ceramide-centric universe of lipid-mediated cell regulation: stress encounters of the lipid kind. *J Biol Chem* **277**(29):25847-25850.
- Jana A and Pahan K (2004) Fibrillar amyloid-beta peptides kill human primary neurons via NADPH oxidase-mediated activation of neutral sphingomyelinase. Implications for Alzheimer's disease. *J Biol Chem* **279**(49):51451-51459.

- Lee JT, Xu J, Lee JM, Ku G, Han X, Yang DI, Chen S and Hsu CY (2004) Amyloid-beta peptide induces oligodendrocyte death by activating the neutral sphingomyelinase-ceramide pathway. *J Cell Biol* **164**(1):123-131.
- Li YP, Bushnell AF, Lee CM, Perlmutter LS and Wong SK (1996) Beta-amyloid induces apoptosis in human-derived neurotypic SH-SY5Y cells. *Brain Res* **738**(2):196-204.
- Luetjens CM, Lankiewicz S, Bui NT, Krohn AJ, Poppe M and Prehn JH (2001) Up-regulation of Bcl-xL in response to subtoxic beta-amyloid: role in neuronal resistance against apoptotic and oxidative injury. *Neuroscience* **102**(1):139-150.
- Maceyka M, Sankala H, Hait NC, Le Stunff H, Liu H, Toman R, Collier C, Zhang M, Satin LS, Merrill AH, Jr., Milstien S and Spiegel S (2005) SphK1 and SphK2, sphingosine kinase isoenzymes with opposing functions in sphingolipid metabolism. *J Biol Chem* **280**(44):37118-37129.
- Muller WE, Romero FJ, Perovic S, Pergande G and Pialoglou P (1997) Protection of flupirtine on beta-amyloid-induced apoptosis in neuronal cells in vitro: prevention of amyloid-induced glutathione depletion. *J Neurochem* **68**(6):2371-2377.
- Nava VE, Cuvillier O, Edsall LC, Kimura K, Milstien S, Gelmann EP and Spiegel S (2000) Sphingosine enhances apoptosis of radiation-resistant prostate cancer cells. *Cancer Res* **60**(16):4468-4474.
- Nava VE, Hobson JP, Murthy S, Milstien S and Spiegel S (2002) Sphingosine kinase type 1 promotes estrogen-dependent tumorigenesis of breast cancer MCF-7 cells. *Experimental cell research* **281**(1):115-127.
- Niikura T, Hashimoto Y, Okamoto T, Abe Y, Yasukawa T, Kawasumi M, Hiraki T, Kita Y, Terashita K, Kouyama K and Nishimoto I (2001) Insulin-like growth factor I (IGF-I) protects cells from apoptosis by Alzheimer's V642I mutant amyloid precursor protein through IGF-I receptor in an IGF-binding protein-sensitive manner. *J Neurosci* **21**(6):1902-1910.
- Olivera A, Kohama T, Edsall L, Nava V, Cuvillier O, Poulton S and Spiegel S (1999) Sphingosine kinase expression increases intracellular sphingosine-1-phosphate and promotes cell growth and survival. *J Cell Biol* **147**(3):545-558.
- Olivieri G, Baysang G, Meier F, Muller-Spahn F, Stahelin HB, Brockhaus M and Brack C (2001) N-acetyl-L-cysteine protects SHSY5Y neuroblastoma cells from oxidative stress and cell cytotoxicity: effects on beta-amyloid secretion and tau phosphorylation. *J Neurochem* **76**(1):224-233.

- Pchejetski D, Golzio M, Bonhoure E, Calvet C, Doumerc N, Garcia V, Mazerolles C, Rischmann P, Teissie J, Malavaud B and Cuvillier O (2005) Sphingosine kinase-1 as a chemotherapy sensor in prostate adenocarcinoma cell and mouse models. *Cancer Res* **65**:11667-11675.
- Pchejetski D, Kunduzova O, Dayon A, Calise D, Seguelas MH, Leducq N, Seif I, Parini A and Cuvillier O (2007) Oxidative stress-dependent sphingosine kinase-1 inhibition mediates monoamine oxidase A-associated cardiac cell apoptosis. *Circ Res* **100**(1):41-49.
- Pereira C, Santos MS and Oliveira C (1999) Involvement of oxidative stress on the impairment of energy metabolism induced by A beta peptides on PC12 cells: protection by antioxidants. *Neurobiol Dis* **6**(3):209-219.
- Pettifer KM, Kleywegt S, Bau CJ, Ramsbottom JD, Vertes E, Ciccarelli R, Caciagli F, Werstiuk ES and Rathbone MP (2004) Guanosine protects SH-SY5Y cells against beta-amyloid-induced apoptosis. *Neuroreport* **15**(5):833-836.
- Pitson SM, Moretti PA, Zebol JR, Xia P, Gamble JR, Vadas MA, D'Andrea RJ and Wattenberg BW (2000) Expression of a catalytically inactive sphingosine kinase mutant blocks agonist-induced sphingosine kinase activation. A dominant-negative sphingosine kinase. *J Biol Chem* **275**(43):33945-33950.
- Prehn JH, Bindokas VP, Jordan J, Galindo MF, Ghadge GD, Roos RP, Boise LH, Thompson CB, Krajewski S, Reed JC and Miller RJ (1996) Protective effect of transforming growth factor-beta 1 on beta-amyloid neurotoxicity in rat hippocampal neurons. *Mol Pharmacol* **49**(2):319-328.
- Ren RF and Flanders KC (1996) Transforming growth factors-beta protect primary rat hippocampal neuronal cultures from degeneration induced by beta-amyloid peptide. *Brain Res* **732**(1-2):16-24.
- Ren RF, Hawver DB, Kim RS and Flanders KC (1997) Transforming growth factor-beta protects human hNT cells from degeneration induced by beta-amyloid peptide: involvement of the TGF-beta type II receptor. *Brain Res Mol Brain Res* **48**(2):315-322.
- Rohrer AE, Lowenson JD, Clarke S, Woods AS, Cotter RJ, Gowing E and Ball MJ (1993) beta-Amyloid-(1-42) is a major component of cerebrovascular amyloid deposits: implications for the pathology of Alzheimer disease. *Proc Natl Acad Sci U S A* **90**(22):10836-10840.

- Satoi H, Tomimoto H, Ohtani R, Kitano T, Kondo T, Watanabe M, Oka N, Akiguchi I, Furuya S, Hirabayashi Y and Okazaki T (2005) Astroglial expression of ceramide in Alzheimer's disease brains: a role during neuronal apoptosis. *Neuroscience* **130**(3):657-666.
- Selkoe DJ (2001) Alzheimer's disease: genes, proteins, and therapy. *Physiol Rev* **81**(2):741-766.
- Spiegel S and Milstien S (2003) Sphingosine-1-phosphate: an enigmatic signalling lipid. *Nat Rev Mol Cell Biol* **4**(5):397-407.
- Taha TA, Kitatani K, El-Alwani M, Bielawski J, Hannun YA and Obeid LM (2006) Loss of sphingosine kinase-1 activates the intrinsic pathway of programmed cell death: modulation of sphingolipid levels and the induction of apoptosis. *Faseb J* **20**(3):482-484.
- Taha TA, Osta W, Kozhaya L, Bielawski J, Johnson KR, Gillanders WE, Dbaibo GS, Hannun YA and Obeid LM (2004) Down-regulation of sphingosine kinase-1 by DNA damage: dependence on proteases and p53. *J Biol Chem* **279**(19):20546-20554.
- Tesseur I, Zou K, Esposito L, Bard F, Berber E, Can JV, Lin AH, Crews L, Tremblay P, Mathews P, Mucke L, Masliah E and Wyss-Coray T (2006) Deficiency in neuronal TGF-beta signaling promotes neurodegeneration and Alzheimer's pathology. *J Clin Invest* **116**(11):3060-3069.
- Uberti D, Rizzini C, Spano PF and Memo M (1997) Characterization of tau proteins in human neuroblastoma SH-SY5Y cell line. *Neurosci Lett* **235**(3):149-153.
- Wei W, Wang X and Kusiak JW (2002) Signaling events in amyloid beta-peptide-induced neuronal death and insulin-like growth factor I protection. *J Biol Chem* **277**(20):17649-17656.
- Yamanaka M, Shegogue D, Pei H, Bu S, Bielawska A, Bielawski J, Pettus B, Hannun YA, Obeid L and Trojanowska M (2004) Sphingosine kinase 1 (SPHK1) is induced by transforming growth factor-beta and mediates TIMP-1 up-regulation. *J Biol Chem* **279**(52):53994-54001.
- Yang DI, Yeh CH, Chen S, Xu J and Hsu CY (2004) Neutral sphingomyelinase activation in endothelial and glial cell death induced by amyloid beta-peptide. *Neurobiol Dis* **17**(1):99-107.
- Zeng C, Lee JT, Chen H, Chen S, Hsu CY and Xu J (2005) Amyloid-beta peptide enhances tumor necrosis factor-alpha-induced iNOS through neutral

MOL # 33738

sphingomyelinase/ceramide pathway in oligodendrocytes. *J Neurochem* **94**(3):703-712.

FOOTNOTES

¹ Supported by the Institut National de la Santé et de la Recherche Médicale (Inserm), the Centre National de la Recherche Scientifique (CNRS) and GIS 'Infections à prions'.

FIGURE LEGENDS

Figure 1 - Cell death induced by A β 25-35 peptide is associated with alteration in sphingolipid metabolism due to SphK1 inhibition

(A) Representative phase-contrast images of SH-SY5Y before (top) and after (bottom) differentiation into neuron-like cells with retinoic acid (10 μ M, 5 days). (B) SH-SY5Y cells were treated with 10 μ M of A β peptides for 24 hrs and cell viability was assessed by the MTT assay. *Columns*, mean of more than ten experiments; *bars*, SE. *Inset*, representative images of 24-hour A β peptides-treated cells stained with Syto13-propidium iodide. Cells were incubated with 10 μ M A β 25-35 peptide for the indicated times, then tested for SphK1 activity (C), ceramide (D) and S1P (E) levels. Basal SphK1 activity was 31.1 ± 2.3 pmol/mg/min. Basal ceramide and S1P contents were 2650 ± 110 pmol/mg protein and 22.6 ± 1.7 pmol/ μ g protein, respectively. *Columns*, mean of six experiments performed in triplicate; *bars*, SE. The two-tailed *P* values between the means are as follow: ***, $P < 0.001$; **, $P < 0.01$; *, $P < 0.1$.

Figure 2 - SphK1 inhibition by A β 25-35 peptide is redox-sensitive

(A) SH-SY5Y cells were pre-incubated for 2 hrs with 5 mM of NAC and then treated with 10 μ M of A β 25-35 peptide for 3 hrs (SphK1 assay) or 24 hrs (MTT assay). (B) SH-SY5Y cells were pre-incubated for 1 hr with 5 mM of NAC and then treated with 10 μ M of H₂O₂ for 60 min (SphK1 assay) or 24 hrs (MTT assay). *Columns*, mean of six experiments for MTT and SphK1 assays; *bars*, SE. The two-tailed *P* values between the means are as follow: ***, $P < 0.001$; **, $P < 0.01$.

Figure 3 - SphK1 enforced expression protects against A β 25-35 peptide-induced cell death in SH-SY5Y cells

(A) SphK1 expression in SH-SY5Y cells was analyzed by Western blotting using an anti-FLAG antibody. (B) basal SphK1 activity and content of ceramide and S1P were measured in SH-SY5Y/Neo and SphK1 overexpressing cells. *Inset*, corresponding S1P content produced *in vitro* by SphK1 in SH-SY5Y/Neo and SphK1 overexpressing as shown by TLC. (C) cell viability was assessed after 24-hour A β 25-35 peptide treatment of SH-SY5Y overexpressing or not SphK1, and expressed as a percentage of respective untreated cells, respectively. (D) Sphingolipid levels were estimated after 3 hrs of incubation with A β 25-35 peptide. *Columns*, mean of more than ten experiments performed in triplicate; *bars*, SE. The two-tailed *P* values between the means are as follow: ***, *P*<0.001.

Figure 4 - SphK1-targeted inhibition by RNA interference induces cell death in SH-SY5Y cells

(A) SphK1 activity in SH-SY5Y cells was assessed after a 72-hour treatment with scrambled or hSphK1 siRNA (20 nM). *Inset*, S1P content of control, scrambled, or hSphK1 RNA interference-treated SH-SY5Y cells as shown by TLC. *Columns*, average of three independent assessments of SphK1 activity; *bars*, SE. (B) SphK1 expression in SH-SY5Y/SphK1 cells treated for 72 hours with scrambled or hSphK1 siRNA was analyzed by Western blotting using an anti-FLAG antibody. (C) sphingolipid levels were measured after 72 hrs of incubation with scrambled or hSphK1 siRNA in SH-SY5Y cells. (D) cell viability was determined by MTT after treatment of SH-SY5Y cells with scrambled or hSphK1 siRNA for the indicated times. *Columns*, average of three independent experiments expressed as percentage of untreated cells; *bars*, SE. The two-tailed *P* values between the means are as follow: ***, *P*<0.001; **, *P*<0.01; *, *P*<0.1.

Figure 5 - SphK1 transmits the cytoprotective effects of IGF-I

(A) SH-SY5Y cells were treated for 24 hrs with the indicated drugs and cell viability was assessed by MTT. *Columns*, mean of ten experiments performed in triplicate. (B) cells were incubated with 75 ng/ml IGF-I for the indicated times, then tested for SphK1 activity. *Inset*, Ceramide and S1P levels were determined in SH-SY5Y incubated with 75 ng/ml IGF-I for 1 hr. *Columns*, mean of six and three experiments performed in triplicate for B and C, respectively. *Bars*, SE. The two-tailed *P* values between the means are as follow: ***, $P < 0.001$; **, $P < 0.01$; *, $P < 0.1$.

Figure 6 - Blockade of SphK1 activity impedes IGF-I-induced prosurvival effects

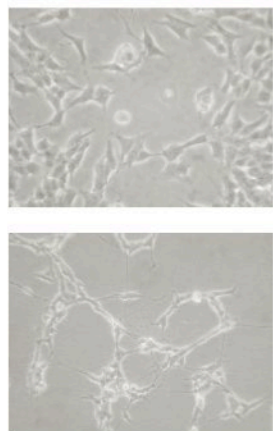
(A) Neo and SphK1-DN overexpressing SH-SY5Y cells were incubated with 75 ng/ml IGF-I for 60 min, then tested for SphK1 activity. *Inset*, expression of SphK1 in SH-SY5Y/Neo and SphK1-DN cells was analyzed by Western blotting using an anti-FLAG antibody. *Columns*, mean of three experiments performed in triplicate. *Bars*, SE. (B) SphK1-DN and SphK1 overexpressing SH-SY5Y cells were treated with 10 μ M of A β peptides for 24 hrs in the presence or not of 75 ng/ml IGF-I and cell viability was quantified by MTT assay. *Columns*, mean of ten experiments performed in triplicate. *Bars*, SE. (C) Cell viability was assessed in SH-SY5Y/Neo cells were incubated as indicated with the following compounds : 10 μ M of A β 25-35 peptide, 75 ng/ml IGF-I, and 1 and 5 μ M SphK inhibitor SKI. *Columns*, mean of ten experiments performed in triplicate. *Bars*, SE. (D) Cell viability was determined in SH-SY5Y cells pre-incubated for 72 hrs in presence of scrambled or SphK1 RNAi then treated for an additional 24 hrs without or with 10 μ M of A β peptides and/or 75 ng/ml IGF-I. *Columns*, mean of three to five experiments performed in triplicate. *Bars*, SE. The two-tailed *P* values between the means are as follow: ***, $P < 0.001$; **, $P < 0.01$; *, $P < 0.1$.

Figure 7 - TGF- β 1 cytoprotective effect involves the SphK1/S1P pathway

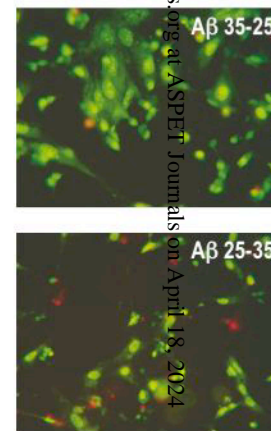
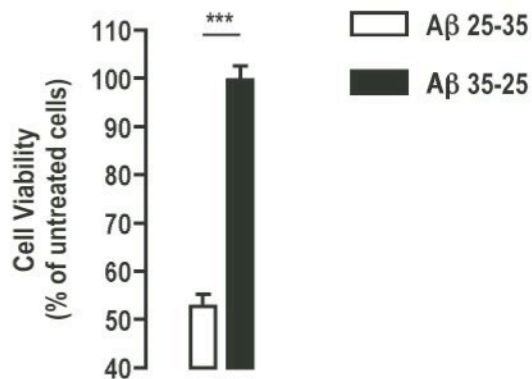
(A) Neo, SphK1 and SphK1-DN overexpressing SH-SY5Y cells were incubated in the presence of 10 ng/ml TGF- β 1 or vehicle for 24 hrs, then treated with 10 μ M of A β peptides for 24 hrs and cell viability was quantified by MTT assay. *Columns*, mean of ten experiments performed in triplicate. *Bars*, SE. (B) Neo and SphK1-DN overexpressing SH-SY5Y cells were incubated with 10 ng/ml TGF- β 1 for the indicated times, then tested for SphK1 activity. (C) Ceramide and S1P levels were determined in SH-SY5Y/Neo and SphK1-DN overexpressing cells incubated with 10 ng/ml TGF- β 1 for 1 hr. *Columns*, mean of three experiments performed in triplicate. *Bars*, SE. The two-tailed *P* values between the means are as follow: ***, $P < 0.001$; **, $P < 0.01$; *, $P < 0.1$.

Fig 1

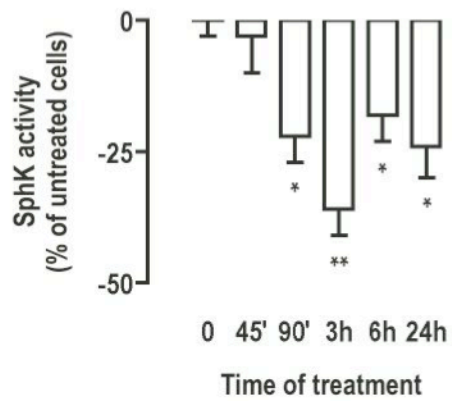
A.



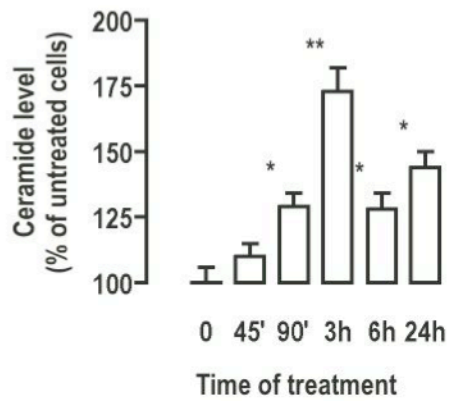
B.



C.



D.



E.

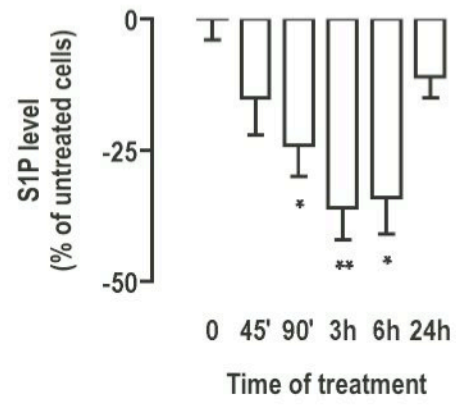
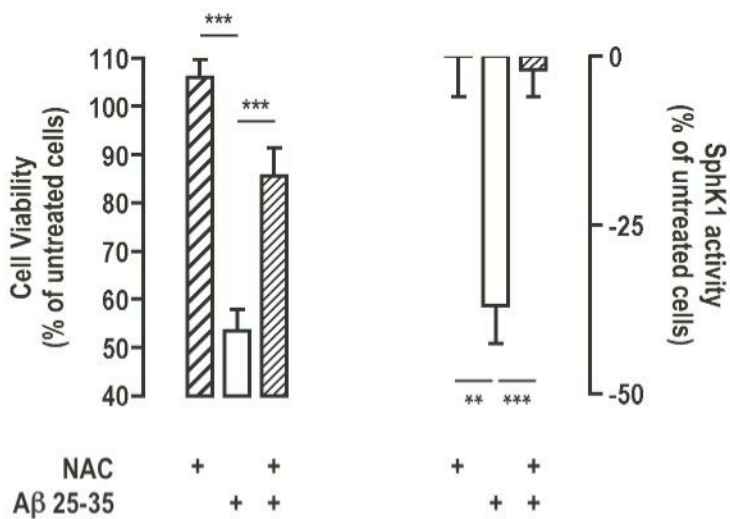


Fig 2

A.



B.

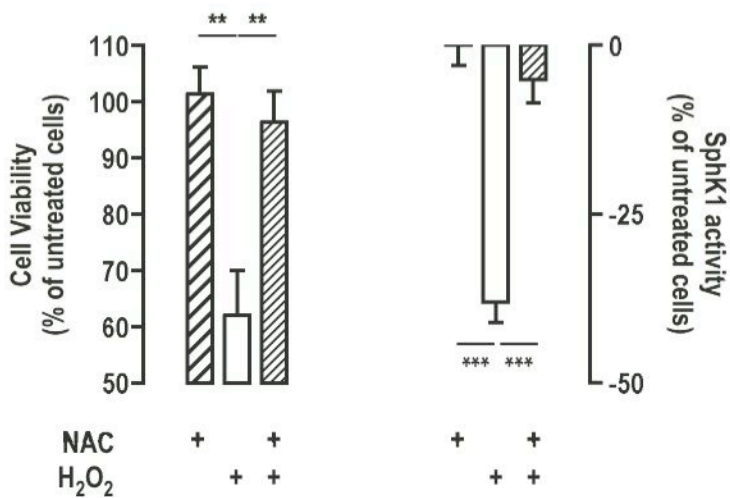
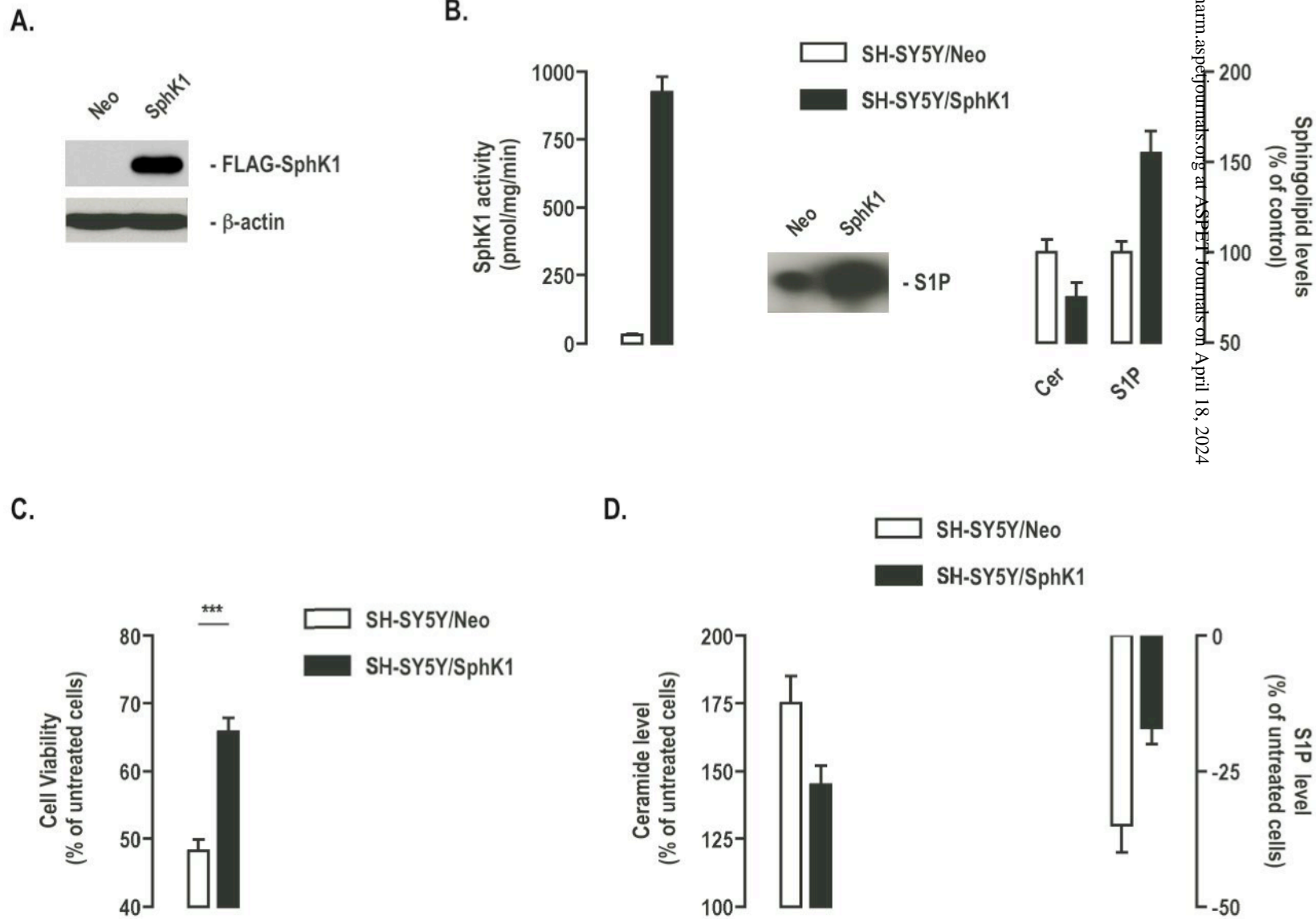


Fig 3



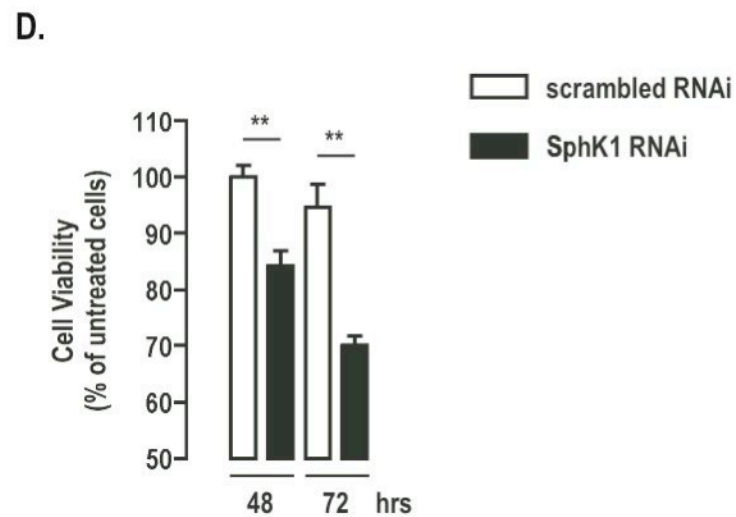
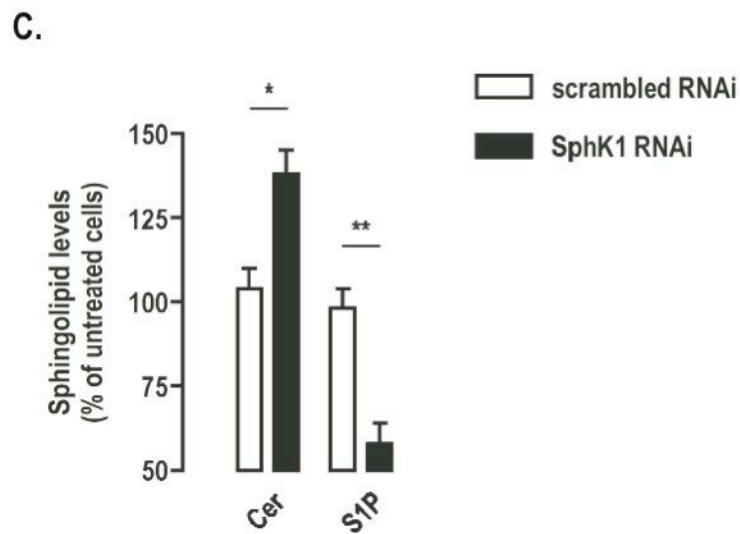
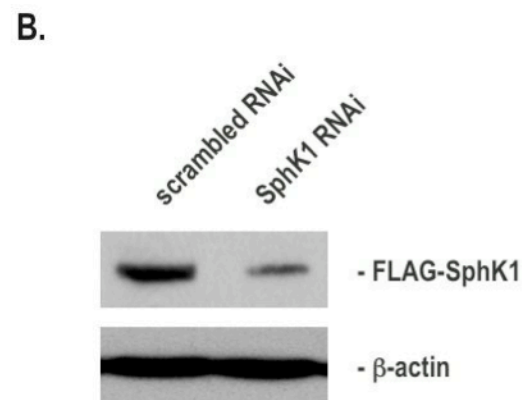
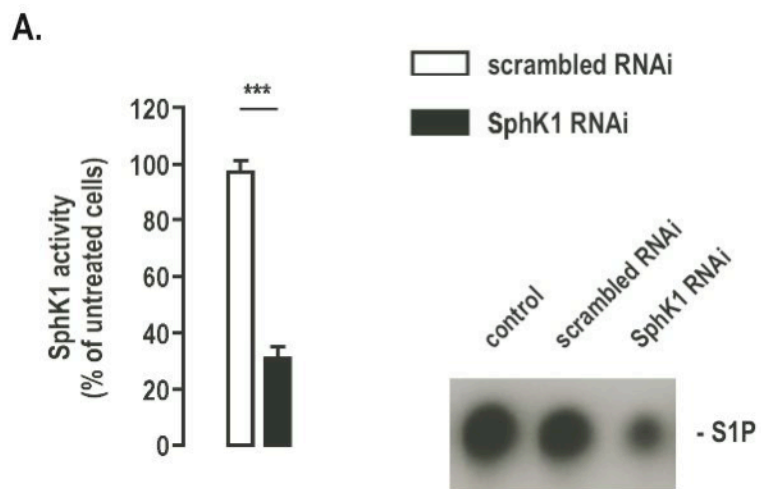
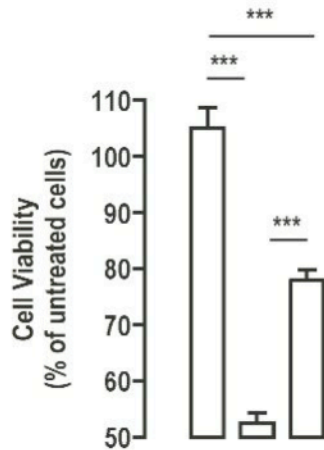


Fig 5

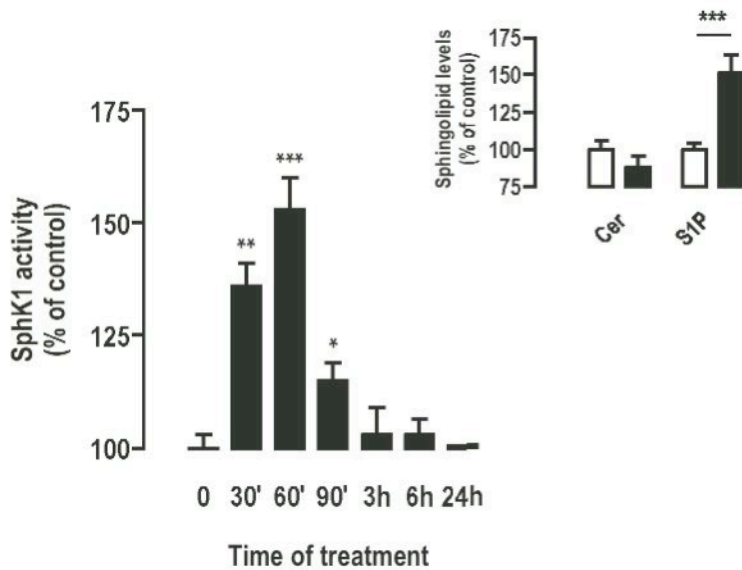
A.



Aβ 25-35 (10 μM)
IGF-I (75 ng/ml)

+ + +
+ +

B.



0 30' 60' 90' 3h 6h 24h

Time of treatment

Cer

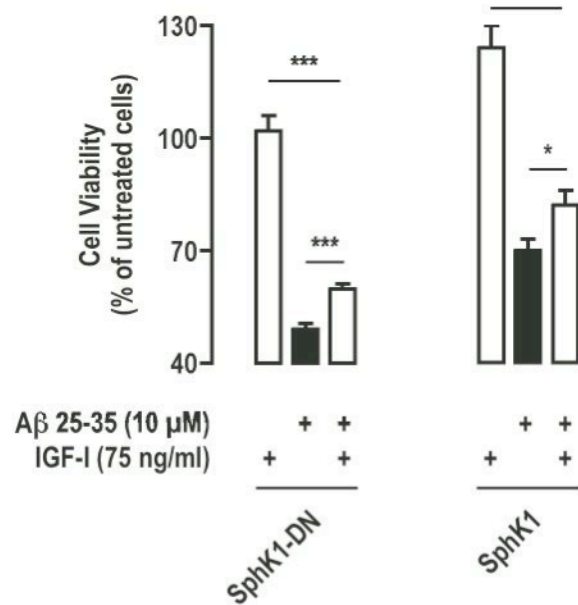
S1P

Fig 6

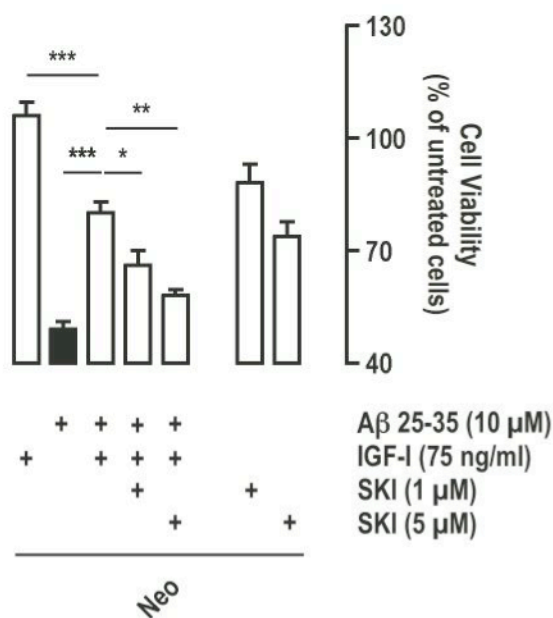
A.



B.



C.



D.

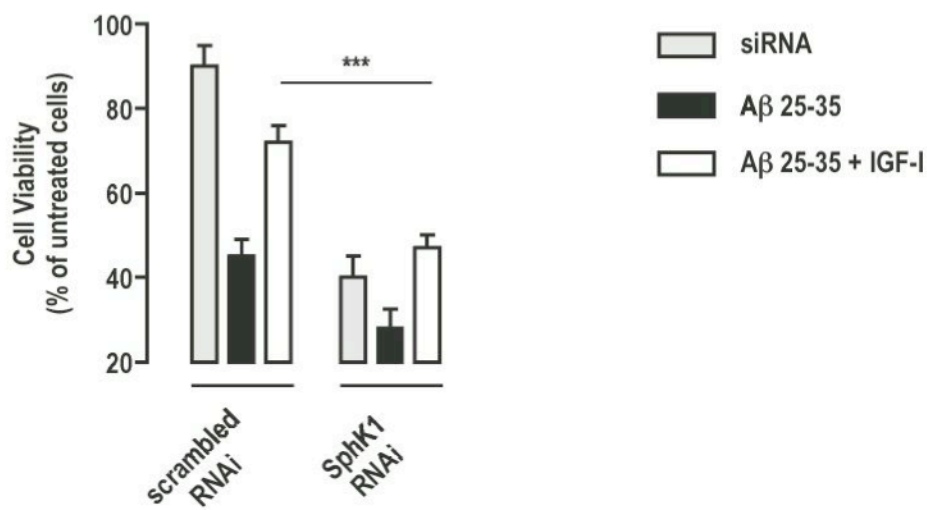
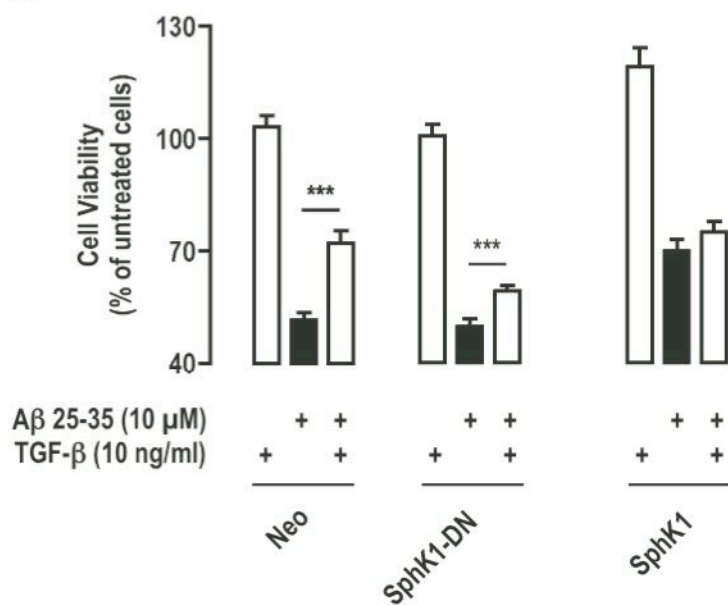
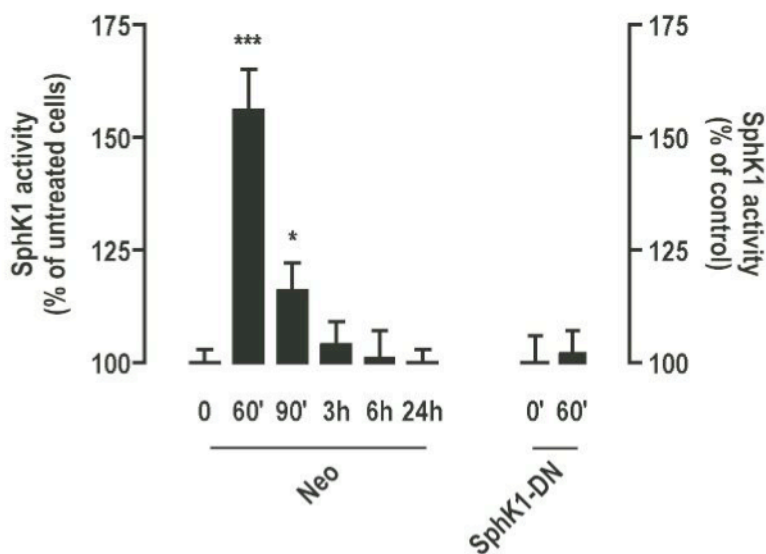


Fig 7

A.



B.



C.

