

MOL #39602

**Transforming growth factor- β 1 impairs endothelin-1-mediated contraction of brain vessels
via induction of mitogen-activated protein kinase phosphatase-1 and inhibition of p38 MAP
kinase.**

Xin-Kang Tong and Edith Hamel

Laboratory of Cerebrovascular Research, Montreal Neurological Institute, McGill University,
3801 University Street, Montréal, QC, Canada H3A 2B4

This work was supported by grants from the Canadian Institute of Health Research (CIHR,
MOP-64194 and MOP-5334) and the Alzheimer's Society of Canada.

MOL #39602

Running Title

TGF- β 1 inhibits cerebrovascular ET_A receptor signaling.

Correspondence should be addressed to:

Edith Hamel, PhD

Laboratory of Cerebrovascular Research,

Montreal Neurological Institute,

McGill University,

3801 University Street,

Montréal, QC, Canada, H3A 2B4,

tel: (514) 398-8928

fax: (514) 398-8106

E-Mail: edith.hamel@mcgill.ca

Number of text pages: 18

Number of tables: 0

Number of figures: 8

Number of references: 40

Number of words in Abstract: 232

Number of words in Introduction: 528

Number of words in Discussion: 1201

MOL #39602

Abbreviations: A β : amyloid β ; AD: Alzheimer's disease; COX-1, cyclooxygenase-1; COX-2, cyclooxygenase-2; ET-1, endothelin-1; ETA, endothelin receptor A; ETB, endothelin receptor B; ERK, extracellular signal-regulated kinase or p44/42 MAPK (ERK1/2); HSP27, heat shock protein 27; MAPK, mitogen-activated protein kinase; MEK, ERK MAPK kinase; MKK3/6, p38 MAPK kinase; MKP-1, MAPK phosphatase-1; PKC, protein kinase C; pERK, phosphorylated ERK; pp38 MAPK; phosphorylated p38 MAPK; pHSP27, phosphorylated HSP27; TGF- β 1, transforming growth factor- β 1.

MOL #39602

Abstract

Brain levels of transforming growth factor- β 1 (TGF- β 1) are increased in Alzheimer's disease and have been implicated in the associated cerebrovascular pathology. We recently reported that transgenic mice that overexpress TGF- β 1 (TGF⁺ mice) display, with aging, selectively reduced endothelin-1 (ET-1)-mediated contractions. As ET-1 is a key regulator of cerebrovascular tone and homeostasis, we investigated how increased levels of TGF- β 1 could selectively alter this contractile response. We found that ETA receptors, via activation of p38 MAP kinase, mediate the ET-1-induced contraction in mouse cerebral arteries, a response significantly decreased in aged TGF⁺ mice (-39%, $p < 0.01$) despite unaltered ETA receptor levels or affinity. In cerebrovascular smooth muscle cell cultures, chronic TGF- β 1 significantly decreased (>50%, $p < 0.05$) the ET-1-induced activation of the p38 MAPK/heat shock protein 27 (HSP27) signaling pathway. This occurred with no effect upstream to p38 MAP kinase, but with the concomitant induction of mitogen-activated protein kinase phosphatase-1 (MKP-1) expression. Inhibition of MKP-1 expression with Ro-31-8220 or suppression of MKP-1 expression by short interfering RNA restored the ET-1-mediated p38 MAP kinase response. These results disclose a new role for chronic TGF- β 1 in modulating cerebrovascular tone by dampening ET-1-mediated activation of the p38 MAPK/HSP27 signaling pathway. Such changes in ET-1-mediated signaling may help maintain vascular wall homeostasis by compensating for the diminished dilatory function induced by TGF- β 1 and amyloid- β , two molecules which brain levels are increased in patients with Alzheimer's disease.

MOL #39602

While a diagnosis of Alzheimer's disease (AD) can only be established upon neuropathological confirmation of neurofibrillary tangles, neuronal loss, and amyloid- β (A β) peptide deposition in brain parenchyma and blood vessels, recent studies suggest that the cerebrovascular pathology is an early marker of the disease, compatible with impaired cerebral blood flow in cognitively asymptomatic AD patients (for review, Iadecola, 2004). Together with aging, coronary artery diseases, hypertension, atherosclerosis and diabetes have been identified as the main risk factors for sporadic AD (Roher et al., 2003; de la Torre, 2004; Gorelick, 2004). These pathologies affect both the structure of the blood vessels and their responsiveness to vasomotor stimuli and, similar to AD (Grammas and Ovase, 2002), have been associated with increased levels of transforming growth factor- β 1 (TGF- β 1) (Blobe et al., 2000; August and Suthanthiran, 2006). Moreover, TGF- β 1 is increased in brain of patients with ischemic stroke (Krupinski et al., 1996), another risk factor for AD (Kalaria, 2000).

In animal models of AD, reactive oxygen species mediate the A β -induced deficits in cerebrovascular dilatory responses, these being readily restored by antioxidants (Iadecola et al., 1999; Tong et al., 2005). In contrast, in transgenic mice that overexpress TGF- β 1 (TGF⁺ mice) that best recapitulate the structural cerebrovascular pathology seen in AD (Wyss-Coray et al., 2000), impaired dilatations or constrictions are progressive, insensitive to antioxidants and selective for specific vasoactive mediators (Tong et al., 2005). Indeed, the decreased contractile response of brain arteries to endothelin-1 (ET-1) occurs despite preserved contractions to serotonin (5-HT), suggesting that the increased thickness of the vessel wall displayed by TGF⁺ mice (Wyss-Coray et al., 2000; Tong et al., 2005) cannot explain the selectively altered vascular reactivity observed with aging. Rather, akin to systemic arteries from hypertensive rats (Kim et

MOL #39602

al., 2004), the selective deficit in the ET-1-mediated contraction could be imputed to alterations in its signaling pathway. ET-1 elicits contraction of cerebral arteries primarily by activating smooth muscle ET_A receptors (Zubkov et al., 2000). However, ET_B receptors exist in both smooth muscle and endothelial cells and have been linked, respectively, to contraction and dilatation (Tirapelli et al., 2005) and they are also involved in ET-1 clearance (Szok et al., 2001; Sanchez et al., 2002). ET-1 receptors activate various signaling pathways and, particularly, different families of mitogen activated protein kinases (MAPKs), such as the extracellular signal-regulated kinase (ERK1/2 or p44/p42), c-Jun NH₂-terminal protein kinase (JNK) or stress-activated protein kinase (SAPK), and p38 MAP kinase (p38 MAPK) (Yue et al., 2000; Zubkov et al., 2000).

As ET-1 is a key regulator of cerebrovascular tone and homeostasis, we investigated if chronic increases in TGF- β 1 levels, as seen in AD brains, could selectively hamper the ET-1-mediated contraction by alteration in its signal transduction pathway. We found that TGF- β 1 inhibited ET-1-induced activation of the p38 MAPK/heat shock protein 27 (HSP27) pathway via expression of the transcriptionally regulated mitogen-activated protein kinase phosphatase-1 (MKP-1). These data show, for the first time, that chronically increased TGF- β 1 directly affects the signaling pathway underlying the ET-1-mediated cerebral contraction. Such an effect could account for the impaired vasocontractile response to ET-1 in aged TGF⁺ mice and may represent a means to compensate for the lessened dilatory function.

MOL #39602

Materials and Methods

Reagents, siRNA and antibodies. Porcine TGF- β 1 was from R&D systems (Minneapolis, MN), 5-HT, phenylephrine (PE), U-0126 and A β ₁₋₄₀ from Sigma (St. Louis, MO), ET-1, ETA (BQ-123) and ETB (BQ-788) receptor antagonists from American Peptide (Vista, CA), Ro-31-8220 and SB-203580 from Calbiochem (San Diego, CA), and GF 109203X from Tocris Bioscience (Ellisville, MO). Short interfering RNA (Stealth siRNA) constructs homologous to rat MKP-1 or control (scrambled) siRNAs were from Invitrogen (Burlington, ON, Canada). Antibodies were: rabbit anti-p38, -phospho p38^{Thr-180/Tyr-182} (pp38), -p44/42 MAPK (ERK1/2), -phospho ERK1/2^{Thr-202/Tyr-204} (pERK), -MKK3, -phospho MKK3/6^{Ser189/207} (Cell Signal, Beverly, MA), -MKP-1 (Santa Cruz), -ETA and -ETB receptors (Alomone labs, Jerusalem, Israel) or -cyclooxygenase-2 (COX-2) (Cayman Chemical, Ann Arbor, MI, for Western blot or goat anti-COX-2 (Santa Cruz, CA) for immunocytochemistry), mouse anti-cyclooxygenase-1 (COX-1, Cayman Chemical), -smooth muscle actin (NeoMarkers, Fremont, CA or Sigma for FITC-conjugate), or - β -actin (Sigma). Biotinylated secondary antibodies and the AB Complex (ABC) kit were from Vector Labs (Burlingame, CA) and FITC, Cy2- or Cy3-conjugated antibodies from Jackson Labs (West Grove, PA). Cell culture materials were from Invitrogen and Sigma.

Animals and vascular tissues. Aged (\geq 18 months, body weight \sim 40 \pm 10g) heterozygous transgenic TGF⁺ mice and wild-type (WT) littermate controls on a C57BL/6 background were used (Wyss-Coray et al., 2000; Tong et al., 2005). Cerebrovascular reactivity was measured in aged transgenic and WT littermates (n=20/group) and signaling pathways tested in aged WT littermates (n=4). For vascular reactivity studies, the first segments of the middle cerebral (MCA) or, where indicated, the posterior cerebral (PCA) arteries were isolated from WT and TGF⁺ mice sacrificed by cervical dislocation and used for online videomicroscopy analysis of

MOL #39602

diameter changes (Tong et al., 2005). Remaining vessels of the circle of Willis and their branches were immediately dissected under a microscope, frozen (dry ice) and stored (-80°C) until Western blot analysis. Experiments were approved by the Institute's Animal Ethics Committee and abided to the Canadian Council for Animal Care.

Vascular reactivity studies. MCA segments (~2mm in length, average intraluminal diameter ~ 50µm) were cannulated on a glass micropipette (~40 µm diameter) at one end, sealed to another glass micropipette on the other end, and filled with an oxygenated (95%) Krebs solution, as detailed previously (Tong et al., 2005) Vessels were then pressurized (60mmHg), superfused with Krebs and allowed to stabilize and acquire basal tone (45min-1hr). Then, increasing concentrations of ET-1 (10^{-10} - 3×10^{-7} M), 5-HT or PE (10^{-9} - 10^{-5} or 10^{-4} M) were applied extraluminally, and changes in intraluminal diameters from basal tone measured online using a closed circuit video system coupled to a video caliper (Imagen Instrumentation, Trenton, New Jersey, USA). In some vessels (n=5/group), ETA or ETB receptors were blocked with their selective antagonists BQ-123 or BQ-788 (10^{-7} M, 30 min pre-incubation and in each ET-1 concentration) (Ishikawa et al., 1994). Intracellular signaling pathways were assessed in vessels pre-incubated (1hr) with a maximal effective, yet non-toxic, dose of SB-203580 (50µM, a p38 MAPK inhibitor) or U-0126 (10µM, a ERK1/2 MAP kinase or MEK inhibitor) (Davies et al., 2000) as determined in vessels from six-month old WT mice using 10-50µM SB-203580 (66 and 71% inhibition at 25 and 50µM, respectively) or 0.1-50µM U-0126 (36 and 49% inhibition at 1 and 10µM, respectively, with toxicity and complete loss of vascular reactivity at 25 and 50µM). Vessels were then rinsed in fresh Krebs solution (10 min) and exposed to ET-1 or PE, two agonists reported to mediate constriction via activation of these signaling pathways in cerebral or peripheral arteries (Zubkov et al., 2000; Kim et al., 2004; Zhao et al., 2003).

MOL #39602

Cell culture. Primary cultures of rat or, when indicated, 4 and 18 month-old WT mouse smooth muscle cells (SMC) were generated from brain intracortical microvessels. After dissociation of the microvessels with type IV collagenase (1 mg/ml, 6 min at 37°C), cells were seeded onto 0.5% gelatin-coated culture plates containing 64% medium M199, 30% fetal bovine serum, peptone (0.05%), D-glucose (1%), BME Amino Acid (1X), BME Vitamin (1%) and antibiotics. After 2 to 3 weeks in culture, >85% of cells stained positively for smooth muscle α -actin. For activation of ERK and p38 MAPK pathways, cells were pre-treated with TGF- β 1 (3ng/ml, 72 hr) (Grammas and Ovase, 2002) in serum free medium and then in serum free medium (2 hr) before stimulation with ET-1 or PE (1×10^{-7} or 10^{-4} M, 10 or 15 min). Some cultures were similarly treated with A β ₁₋₄₀ (1 μ M, 72 hr) (Niwa et al., 2000) before ET-1 stimulation. Inhibition of p38 MAPK or pERK activation was performed on cells kept overnight in serum-free condition and pre-treated (1 hr) with SB-203580 (25 μ M) or U-0126 (10 μ M) before stimulation with ET-1 or PE. The contribution of MKP-1 or protein kinase C (PKC) in TGF- β 1 regulation of p38MAPK/HSP27 activity was assessed in cells pre-treated with TGF- β 1 (48 hr) and with both TGF- β 1 and different concentrations of Ro-31-8220 or GF 109203X for another 24 hr, followed by 2 hr incubation in serum free medium before ET-1 stimulation.

MKP-1 siRNA Transfection. Primary cultures of rat brain smooth muscle cells in primary plating medium (with antibiotics) were seeded onto 30 mm diameter dishes (2 days), and then changed to antibiotic-free medium. On the third day, siRNA was transfected using Lepofectamine 2000 reagent according to the manufacturer's instructions (Invitrogen). After 8-14 hr, transfection reagents were washed and the cells stimulated with TGF- β 1 (3 ng/ml) for 24 hr in medium containing 3% bovine serum, and then for an additional 36 hr in serum free medium before stimulation with ET-1 as above. RNA oligonucleotides were as follows: forward,

MOL #39602

5'- GAG UAC UAG UGU GCC UGA CAG UGC A-3'; reverse: 5'- CCA GCU GCU GCA AUU UGA GUC CCA A-3'. Control siRNA were: forward, 5'- GAG GAU CGU GUG GUG UCC GAC AUA UGC A-3'; reverse: 5'-UUG CGG UCA GAA ACC GUU ACG AUG G-3'.

Western blot. Western blot analysis in vessels from WT and TGF⁺ mice were performed as before (Tong et al., 2005). For SMC cultures, cells were lysed (20 mM Tris-Cl, pH 7.4, 150 mM NaCl, 0.1% Nonidet P-40, 1% glycerol, 0.2 mM sodium vanadate, and protease inhibitor mixture from Roche diagnostic) and proteins similarly prepared. Membranes (~20 μ g protein) were probed with antibodies using β -actin as a control for loading, proteins detected with ECL (Amersham), quantified by densitometry and compared by one-way ANOVA or Student's *t* tests.

Immunofluorescence in brain microvascular SMC cultures. SMC cultured onto coverslips (1-2 weeks) were treated with TGF- β 1 (3ng/ml, 72 hr) (COX-2 experiments) or with TGF- β 1 (48 hr) and then with both TGF- β 1 and Ro-31-8220 (4 μ M) for 24 hr (MKP-1 experiments), or were transfected as above. Pharmacologically treated or siRNA transfected cells were fixed (30 min, 4% paraformaldehyde), permeabilized (0.3% Triton X-100, 10 min) and incubated (1 hr) with primary antibodies (COX-2, MKP-1 or smooth muscle actin) detected with FITC, CY2- or CY3-conjugated secondary antibodies, and viewed under epifluorescence microscopy.

Statistical Analyses. Agonist-induced concentration-dependent or maximal (E_{max}) contractions (percent change from baseline diameter) and potency (pD_2 values or $-\log$ of EC_{50}), expressed as mean \pm S.E.M, were compared by one-way ANOVA followed by Newman-Keuls or Dunnett's (COX-2 experiments) post-hoc comparison test. ET-1 receptor antagonists potency was expressed as pKB (competitive antagonism) or pD_2' (non-competitive antagonism when a significant decrease in ET-1 E_{max} was obtained by Student's *t* test) values. Statistical analyses were performed with GraphPad Prism 4 (San Diego, CA, USA), a $p < 0.05$ was significant.

MOL #39602

Results

ET-1-induced contractions are impaired in brain vessels from old TGF⁺ mice. In agreement with our previous findings (Tong et al., 2005), contractions elicited by ET-1 were significantly decreased in aged TGF⁺ mice as compared to WT littermate controls (Fig. 1A). The response was maximally affected at 3×10^{-7} M ET-1 (-39%, $p < 0.001$), and this impairment was selective as contractions induced by 5-HT or PE were unaltered (Fig. 1A). The decreased ET-1-mediated contractions occurred with no change in ET-1 potency (pEC₅₀ values of 8.52 ± 0.16 and 8.52 ± 0.27 in TGF⁺ and WT mice, respectively) or in cerebrovascular ETA receptor levels (Fig. 1B), suggesting that mechanisms other than agonist-induced ETA receptor desensitization or downregulation are involved. In contrast, ETB receptor protein levels were slightly but significantly increased (+27%, $p < 0.05$) (Fig. 1B). Because ETB receptors can mediate endothelium-dependent dilatation (Szok et al., 2001; Tirapelli et al., 2005), we tested if their increased levels could account for the diminished ET-1 contractile response. This possibility was discarded since blockade of ETB receptors with the selective ETB receptor antagonist BQ-788 did not restore ET-1-mediated contractions (Fig. 1C). Rather, BQ-788 slightly but significantly ($p < 0.05$) reduced ET-1 E_{max} in WT controls or shifted the ET-1 concentration-response curve in TGF⁺ mice (Fig. 1C), with potencies that corresponded to its affinity at ETA receptors (respective pD₂' and pK_B values of 6.6 and 7.3) (Ishikawa et al., 1994). Moreover, as expected for an ETA receptor-mediated response, the selective ETA receptor antagonist BQ-123 potently inhibited the ET-1 concentration-response curves in both WT and TGF⁺ mice ($p < 0.05$), with respective pK_B values of 8.1 and 7.8 (shown here in TGF⁺ mice, Fig. 1C).

ET-induced vasoconstriction is mediated by p38 MAPK signal transduction pathway.

The contribution of p38 MAPK and ERK pathways in the ET-1- or PE-mediated contraction was

MOL #39602

tested in cerebral arteries from aged WT mice treated with maximal effective dose of respective inhibitor of p38 MAPK (SB-203580, 50 μ M) or MEK (U-0126, 10 μ M). The ET-1-mediated contraction was potently decreased (-66%, $p < 0.001$) by inhibition of p38 MAPK, whereas inhibition of MEK/ERK1/2 pathway exerted a more modest effect (-32%, $p < 0.05$), both without any change in ET-1 potency (Fig. 2A). In brain microvascular SMC cultures, ET-1 induced activation of both p38 MAPK and ERK, and these were significantly inhibited by pre-treatment with their respective inhibitors (Fig. 2B,C). In contrast, p38 MAPK or MEK inhibition had minimal effect on the contraction elicited by PE in mouse cerebral arteries despite effective blockade of the PE-induced activation of p38 and ERK pathways in SMC cultures (Figs. 2D,E). These results indicated that ET-1 and PE both activate p38 MAPK and ERK signaling pathways in brain vascular SMC and that activation of p38 MAPK mediates the bulk of the ET-1-induced contraction in mouse cerebral arteries with a smaller contribution from the ERK pathway, these two pathways being of lesser importance in the PE-mediated cerebral contraction.

Chronic TGF- β 1 selectively blocks ET-1-induced p38 MAPK/HSP27 activation. In order to test if chronic increase in TGF- β 1 could alter ET-1 signaling pathways, we treated brain microvascular SMC with TGF- β 1 and assessed phosphorylation of ERK and p38 MAPK. COX-1 and COX-2 protein levels were also measured as these proteins are respectively constitutively expressed and induced in these cells (Rodriguez et al., 2006), thus allowing COX-2 to be used as a marker of the cells response to TGF- β 1. TGF- β 1 induced COX-2 expression, a response increased at 24 hr and significantly maintained over the 72 hr exposure period, with COX-2 being detected primarily in the nucleus and, to a smaller extent, in the cytoplasm (Fig. 3A). TGF- β 1 stimulated phosphorylation of both p38 MAPK and ERK, the former developed progressively over a 1 hr period and returned to pre-stimulated levels by 24 hr while the latter was rapid and

MOL #39602

brief (peak at ~ 10 min) returning to baseline within 1 hr (Fig. 3B). All subsequent experiments were performed at 72 hr when cells still exhibited significant TGF- β 1-induced COX-2 increase, while ERK and p38 MAPK pathways had returned to basal levels. Under these conditions, TGF- β 1 inhibited (by ~50%, $p < 0.05$) the ET-1-induced activation of p38 MAPK (37% increase in phospho p38 MAPK levels, $p < 0.05$), but had no significant effect on ET-1-induced ERK phosphorylation (Figs. 4A,B), as also found in SMC cultures from young or aged mice (data not shown). Moreover, TGF- β 1 impaired (-65%, $p < 0.05$) the ET-1-induced phosphorylation of HSP27 (Fig. 4A). In contrast, A β 1-40 peptide, at a concentration previously shown to affect cerebrovascular reactivity (Niwa et al., 2000) and above that found in AD brains, did not induce COX-2 expression or alter the stimulatory effect of ET-1 on p38 MAPK (Fig. 4C).

Inhibition of down-stream ET-1 transduction pathway at the p38 phosphorylation step.

In order to decipher the mechanisms involved in the inhibition of ET-1-induced p38 MAPK activation by TGF- β 1, we assessed the protein levels of ETA and ETB receptors, and ET-1-induced activation of p38 MAPK kinase (MKK3/6) directly upstream to the p38 MAPK. These were not altered in SMC exposed to TGF- β 1 (Fig. 5), indicating inhibition of the ET-1 transduction pathway by TGF- β 1 directly at the p38 phosphorylation step. As MKP-1 is a transcriptionally regulated phosphatase that tightly regulates MAPK activities (see discussion), we hypothesized that chronic TGF- β 1 could induce MKP-1 in brain microvascular SMC that would subsequently inhibit p38 MAPK activity. In non-treated SMC, MKP-1 expression was very low. However, in cells exposed to TGF- β 1 and stimulated or not with ET-1, MKP-1 protein levels were significantly increased (~ 36%, $p < 0.001$) (Fig. 6), indicating that TGF- β 1 mediated the MKP-1 induction. Moreover, the inhibitory effect of TGF- β 1 on ET-1-induced p38 MAPK activation occurred concomitantly with MKP-1 upregulation and relapsed when MKP-1

MOL #39602

expression was prevented by Ro-31-8220 (Figs. 6A-C). In contrast, the negative effect of TGF- β 1 on the ET-1-induced activation of the p38 MAPK/HSP27 pathway was not restored in cells treated with the selective PKC inhibitor GF 109203X (Harkin et al., 1998) (Fig. 6D), indicating that Ro-31-8220 did not act through PKC inhibition (Beltman et al., 1996).

To confirm these pharmacological data, we then inhibited gene expression of endogenous MKP-1 by siRNA. Specific MKP-1 siRNA treatment reduced the expression of MKP-1 protein induced by TGF- β 1 by 67.2% ($p < 0.01$), as also evidenced by the drastic decrease in SMC cells immunopositive for MKP-1 after siRNA transfection (Figs. 7A,B). Down-regulation of MKP-1 expression by siRNA resulted in the normalization of p38 MAPK activation, further demonstrating that TGF- β 1-induced MKP-1 expression negatively regulated p38 MAPK activity (Fig. 7A). In contrast, transfection with control siRNA had not effect on the TGF- β 1-induced alterations in MKP-1 levels or p38 MAPK activation in response to ET-1 (Fig. 7A).

MOL #39602

Discussion

Our results disclose a new role for chronically increased levels of TGF- β 1 in brain vessels in modulating their responsiveness to selective vasomotor stimuli. Specifically, we show that chronic TGF- β 1 promotes MKP-1 expression in cerebrovascular SMC, which results in decreased ETA receptor-induced activation of the p38 MAPK/HSP27 pathway that, for the most part, mediates the ET-1-induced contraction of cerebral arteries. These data further suggest that selectively impaired ET-1-mediated cerebrovascular contractions induced *in vivo* by increased TGF- β 1 can be instigated, at least in part, by direct interaction with ET-1 signaling pathway.

ETA versus ETB receptors in the ET-1-mediated contraction in mouse brain vessels. We show that ETA receptors mediate the ET-1-induced contraction in mouse cerebral arteries, as evidenced by the potent antagonism of the selective ETA receptor antagonist BQ-123 which affinity (pKB value of 8.1) corresponded exquisitely well to that reported at ETA receptors (pIC₅₀ values 7.6-8.0) (Ishikawa et al., 1994). In contrast, the potency of the selective ETB receptor antagonist BQ-788 (pD₂' value = 6.6) corresponded to its affinity at ETA receptors (pIC₅₀ values 5.9-6.5) (Ishikawa et al., 1994) further supporting ETA receptors as the prime mediators of the contractile response (Zubkov et al., 2000). In TGF⁺ mice, BQ-788 was slightly more potent (pA₂ = 7.3) in blocking the ET-1-induced contraction as compared to wild-type controls. Although far from BQ-788's affinity at ETB receptors (pIC₅₀ value ~9.0) (Ishikawa et al., 1994), this shift towards a higher potency in TGF⁺ mice may suggest a larger contribution of ETB receptors in the contractile response, as seen in other pathological conditions such as brain ischemia (Stenman et al., 2002) whereby ETB receptors change from a relaxant to a contractile phenotype. Yet, the failure of ETB receptor antagonism to restore the lessened ET-1 contractions in TGF⁺ mice, notwithstanding increased ETB receptors, indicated that the latter, akin to recent

MOL #39602

studies in rat coronary arteries (Tirapelli et al., 2005), do not mediate a sizeable dilatation in mouse cerebral arteries, and hence do not account for the impaired ET-1-induced contraction.

Noteworthy, similar to TGF⁺ mice, transgenic mice that overexpress endothelial ET-1 display reduced contractile responses to ET-1, and increased ETB but not ETA receptor expression (Amiri et al., 2004). In contrast, ETB receptor expression is downregulated in ET-1-deficient astrocytes (Ho et al., 2001), suggesting that the levels of ET-1 regulate the expression of ETB receptors known to mediate its uptake and clearance (Sanchez et al., 2002). Together these observations suggest that upregulation of vascular ETB receptors in TGF⁺ mice likely results from increased levels of ET-1 following its induction by TGF- β 1 (Rodriguez-Pascual et al., 2003), and which could be implicated in the initiation and maintenance of the vascular fibrosis seen in these mice, the latter being normally associated with activation of the MEK/ERK pathway (Yue et al., 2000; Kapoun et al., 2006).

P38 MAPK activation mediated the ET-1-induced contraction. Our findings show that the cerebrovascular response of contractile ETA receptors is altered in TGF⁺ mice, independently from changes in receptor levels or agonist potency. Moreover, our results show, for the first time in brain vessels, that the ET-1-induced contraction involves primarily activation of the p38 MAPK/HSP27 pathway. Similar to our findings, inhibition of p38 MAPK but not ERK signaling reduced the ETA receptor-mediated contraction of pulmonary artery, even though ET-1 induced phosphorylation of both ERK and p38 MAPK (Yamboliev et al., 2000). Also, in aortic smooth muscle of DOCA-salt (Kim et al., 2004) or spontaneously (Kwon et al., 2004) hypertensive rats, the ET-1-mediated contraction was decreased after inactivation of p38 MAPK, pointing to a role for the p38 MAPK/HSP27 pathway in modulating the intensity and maintenance of vascular smooth muscle contraction. The ability of p38 MAPK to mediate the ET-1-induced contraction

MOL #39602

in peripheral arteries has been attributed to its capacity to phosphorylate MAP-kinase-activated protein-2 (MAPKAP-2) kinase that then translocates to the cytoplasm and phosphorylates HSP27 (Yamboliev et al., 2000). HSP27 is an F-actin binding protein that, upon phosphorylation, facilitates actin-myosin coupling, the major mechanism in smooth muscle contraction (Yamboliev et al., 2000; Bitar, 2002).

Regulation of p38 MAPK activation. In cerebrovascular SMC cultures exposed chronically to TGF- β 1, the time course for p38 MAPK and ERK activation differed greatly, consistent with previous reports in other cell types (Pratt et al., 2003). Moreover, although TGF- β 1-mediated activation of ERK and p38 MAPK had both returned to basal levels by 72 hr, the ET-1 induced activation of p38 MAPK was selectively impaired at that time, and this without any disruption in MKK3/6 phosphorylation, indicating an effect at the p38 MAPK step. What is more, the ET-1-mediated p38 MAPK/HSP27 activation was restored upon inhibition of MKP-1 expression with Ro-31-8220, but not following PKC inhibition with GF 109203X, indicating that Ro-31-8220 rescuing effect of p38 MAPK is due to its ability to inhibit MKP-1 expression and not PKC activity (Beltman et al., 1996; Harkin et al., 1998; Davies et al., 2000). This was further confirmed after silencing endogenous MKP-1 expression with siRNA that resulted in the concurrent loss of MKP-1 protein expression (~70% decrease) and normalization of p38 MAPK activity. Together, these findings indicate that MKP-1 expression is involved in the impaired ET-1-induced activation of p38 MAPK following chronic TGF- β 1 treatment (Fig. 8).

Such conclusion is consistent with the marked reduction in p38 phosphorylation in hearts of MKP-1 transgenic mice (Bueno et al., 2001), and the sustained activation of p38 MAPK, but not ERK, in macrophages from MKP-1 knock-out mice after lipopolysaccharide stimulation (Chi et al., 2006), also in line with p38 MAPK being the preferred substrate for MKP-1 over ERK (Yue

MOL #39602

et al., 2000; Pratt et al., 2003). Together with the fact that MKP-1 requires hours to increase after stimulation (McMullen et al., 2005), we conclude that chronic exposure to TGF- β 1 impairs ET-1-mediated contraction in cerebral arteries by selectively inhibiting p38 MAPK activation through induction of MKP-1 expression. As TGF- β 1 receptors signal primarily through the Smad pathway that is known to affect MKP-1 expression (Jono et al., 2003), we suggest that this mechanism is involved in the cellular cascade leading to p38 MAPK inhibition in cerebrovascular smooth muscle cells (Fig. 8). Further, our findings of no deleterious effect of chronic A β ₁₋₄₀ peptide on the ET-1-mediated p38 MAPK activation in brain SMC are consistent with a preserved ET-1 contractile response in transgenic mice overexpressing the A β precursor protein (Tong et al., 2005), and A β ₁₋₄₀ being stimulatory rather than inhibitory on p38 MAPK (Paris et al., 2003).

Our findings highlight a new role for MKP-1 in regulating vascular p38 MAPK activity and cerebrovascular tone. The selective impairment of the ET-1 response could be attributed, at least partly, to its high dependency on the p38 MAPK/HSP27 as compared to 5-HT (Banes et al., 1999) or PE (Zhao et al., 2003) that use primarily other pathways to induce contraction. This mechanism may be of particular importance in AD in which increased cerebrovascular levels of TGF- β 1 (Grammas and Ovase, 2002) may reduce p38 MAPK/HSP27 signaling and, consequently, the ET-1-induced contractions. Such an effect could attempt maintain cerebral homeostasis and perfusion by compensating for the impaired dilatory function elicited by increased brain levels of both A β and TGF- β 1 in AD (Iadecola et al., 1999; Tong et al., 2005).

MOL #39602

References

- Amiri F, Viridis A, Neves MF, Iglarz M, Seidah NG, Touyz RM, Reudelhuber TL and Schiffrin EL (2004) Endothelium-restricted overexpression of human endothelin-1 causes vascular remodeling and endothelial dysfunction. *Circulation* **110**(15):2233-2240.
- August P and Suthanthiran M (2006) Transforming growth factor beta signaling, vascular remodeling, and hypertension. *N Engl J Med* **354**(25):2721-2723.
- Banes A, Florian JA and Watts SW (1999) Mechanisms of 5-hydroxytryptamine(2A) receptor activation of the mitogen-activated protein kinase pathway in vascular smooth muscle. *J Pharmacol Exp Ther* **291**(3):1179-1187.
- Beltman J, McCormick F and Cook SJ (1996) The selective protein kinase C inhibitor, Ro-31-8220, inhibits mitogen-activated protein kinase phosphatase-1 (MKP-1) expression, induces c-Jun expression, and activates Jun N-terminal kinase. *J Biol Chem* **271**(43):27018-27024.
- Bitar KN (2002) HSP27 phosphorylation and interaction with actin-myosin in smooth muscle contraction. *Am J Physiol Gastrointest Liver Physiol* **282**(5):G894-903.
- Blobe GC, Schiemann WP and Lodish HF (2000) Role of transforming growth factor beta in human disease. *N Engl J Med* **342**(18):1350-1358.
- Bueno OF, De Windt LJ, Lim HW, Tymitz KM, Witt SA, Kimball TR and Molkenin JD (2001) The dual-specificity phosphatase MKP-1 limits the cardiac hypertrophic response in vitro and in vivo. *Circ Res* **88**(1):88-96.
- Chi H, Barry SP, Roth RJ, Wu JJ, Jones EA, Bennett AM and Flavell RA (2006) Dynamic regulation of pro- and anti-inflammatory cytokines by MAPK phosphatase 1 (MKP-1) in innate immune responses. *Proc Natl Acad Sci U S A* **103**(7):2274-2279.
- Davies SP, Reddy H, Caivano M and Cohen P (2000) Specificity and mechanism of action of some commonly used protein kinase inhibitors. *Biochem J* **351**(Pt 1):95-105.
- de la Torre JC (2004) Is Alzheimer's disease a neurodegenerative or a vascular disorder? Data, dogma, and dialectics. *Lancet Neurol* **3**:184-190.
- Gorelick PB (2004) Risk factors for vascular dementia and Alzheimer disease. *Stroke* **35**(11 Suppl 1):2620-2622.
- Grammas P and Ovasse R (2002) Cerebrovascular transforming growth factor- β contributes to inflammation in the Alzheimer's disease brain. *Am J Pathol* **160**(5):1583-1587.
- Harkin ST, Cohen GM and Gescher A (1998) Modulation of apoptosis in rat thymocytes by analogs of staurosporine: lack of direct association with inhibition of protein kinase C. *Mol Pharmacol* **54**(4):663-670.
- Ho MC, Lo AC, Kurihara H, Yu AC, Chung SS and Chung SK (2001) Endothelin-1 protects astrocytes from hypoxic/ischemic injury. *Faseb J* **15**(3):618-626.
- Iadecola C (2004) Neurovascular regulation in the normal brain and in Alzheimer's disease. *Nature Neuroscience Reviews* **5**:347-360.
- Iadecola C, Zhang F, Niwa K, Eckman C, Turner SK, Fischer E, Younkin S, Borchelt DR, Hsiao KK and Carlson GA (1999) SOD1 rescues cerebral endothelial dysfunction in mice overexpressing amyloid precursor protein. *Nature Neurosci* **2**:157-161.
- Ishikawa K, Ihara M, Noguchi K, Mase T, Mino N, Saeki T, Fukuroda T, Fukami T, Ozaki S, Nagase T and et al. (1994) Biochemical and pharmacological profile of a potent and selective endothelin B-receptor antagonist, BQ-788. *Proc Natl Acad Sci U S A* **91**(11):4892-4896.
- Jono H, Xu H, Kai H, Lim DJ, Kim YS, Feng XH and Li JD (2003) Transforming growth factor- β -Smad signaling pathway negatively regulates nontypeable *Haemophilus influenzae*-

MOL #39602

- induced MUC5AC mucin transcription via mitogen-activated protein kinase (MAPK) phosphatase-1-dependent inhibition of p38 MAPK. *J Biol Chem* **278**(30):27811-27819.
- Kalaria RN (2000) The role of cerebral ischemia in Alzheimer's disease. *Neurobiol Aging* **21**:321-330.
- Kapoun AM, Gaspar NJ, Wang Y, Damm D, Liu YW, O'Young G, Quon D, Lam A, Munson K, Tran TT, Ma JY, Murphy A, Dugar S, Chakravarty S, Protter AA, Wen FQ, Liu X, Rennard SI and Higgins LS (2006) Transforming growth factor-beta receptor type 1 (TGFbetaRI) kinase activity but not p38 activation is required for TGFbetaRI-induced myofibroblast differentiation and profibrotic gene expression. *Mol Pharmacol* **70**(2):518-531.
- Kim B, Kim J, Bae YM, Cho SI, Kwon SC, Jung JY, Park JC and Ahn HY (2004) p38 mitogen-activated protein kinase contributes to the diminished aortic contraction by endothelin-1 in DOCA-salt hypertensive rats. *Hypertension* **43**(5):1086-1091.
- Krupinski J, Kumar P, Kumar S and Kaluza J (1996) Increased expression of TGF-beta 1 in brain tissue after ischemic stroke in humans. *Stroke* **27**(5):852-857.
- Kwon S, Fang LH, Kim B, Ha TS, Lee SJ and Ahn HY (2004) p38 Mitogen-activated protein kinase regulates vasoconstriction in spontaneously hypertensive rats. *J Pharmacol Sci* **95**(2):267-272.
- McMullen ME, Bryant PW, Glembotski CC, Vincent PA and Pumiglia KM (2005) Activation of p38 has opposing effects on the proliferation and migration of endothelial cells. *J Biol Chem* **280** (22):20995-21003.
- Niwa K, Carlson GA and Iadecola C (2000) Exogenous A β -40 reproduces cerebrovascular alterations resulting from amyloid precursor protein overexpression in mice. *J Cereb Blood Flow Metab* **20**:1659-1668.
- Paris D, Humphrey J, Quadros A, Patel N, Crescentini R, Crawford F and Mullan M (2003) Vasoactive effects of A β in isolated human cerebrovessels and in a transgenic mouse model of Alzheimer's disease: role of inflammation. *Neurol Res* **25**(6):642-651.
- Pratt PF, Bokemeyer D, Foschi M, Sorokin A and Dunn MJ (2003) Alterations in subcellular localization of p38 MAPK potentiates endothelin-stimulated COX-2 expression in glomerular mesangial cells. *J Biol Chem* **278**(51):51928-51936.
- Rodriguez JA, De la Cerda P, Collyer E, Decap V, Vio CP and Velarde V (2006) Cyclooxygenase-2 induction by bradykinin in aortic vascular smooth muscle cells. *Am J Physiol Heart Circ Physiol* **290**(1):H30-36.
- Rodriguez-Pascual F, Redondo-Horcajo M and Lamas S (2003) Functional cooperation between Smad proteins and activator protein-1 regulates transforming growth factor-beta-mediated induction of endothelin-1 expression. *Circ Res* **92**(12):1288-1295.
- Roher AE, Esh C, Kokjohn TA, Kalback W, Luehrs DC, Seward JD, Sue LI and Beach TG (2003) Circle of Willis atherosclerosis is a risk factor for sporadic Alzheimer's disease. *Arterioscler Thromb Vasc Bio* **23**:2055-2062.
- Sanchez R, MacKenzie A, Farhat N, Nguyen TD, Stewart DJ, Mercier I, Calderone A and Thorin E (2002) Endothelin B receptor-mediated regulation of endothelin-1 content and release in cultured porcine aorta endothelial cell. *J Cardiovasc Pharmacol* **39**(5):652-659.
- Stenman E, Malmsjo M, Uddman E, Gido G, Wieloch T and Edvinsson L (2002) Cerebral ischemia upregulates vascular endothelin ET(B) receptors in rat. *Stroke* **33**(9):2311-2316.
- Szok D, Hansen-Schwartz J and Edvinsson L (2001) In depth pharmacological characterization of endothelin B receptors in the rat middle cerebral artery. *Neurosci Lett* **314**(1-2):69-72.
- Tirapelli CR, Casolari DA, Yogi A, Montezano AC, Tostes RC, Legros E, D'Orleans-Juste P and de Oliveira AM (2005) Functional characterization and expression of endothelin

MOL #39602

- receptors in rat carotid artery: involvement of nitric oxide, a vasodilator prostanoid and the opening of K⁺ channels in ETB-induced relaxation. *Br J Pharmacol* **146**(6):903-912.
- Tong XK, Nicolakakis N, Kocharian A and Hamel E (2005) Vascular remodeling versus amyloid β -induced oxidative stress in the cerebrovascular dysfunctions associated with Alzheimer's disease. *J Neuroscience* **25**(48):11165-11174.
- Wyss-Coray T, Lin C, Sanan DA, Mucke L and Masliah E (2000) Chronic overproduction of transforming growth factor- β 1 by astrocytes promotes Alzheimer's disease-like microvascular degeneration in transgenic mice. *Am J Pathol* **156**:139-150.
- Yamboliev IA, Hedges JC, Mutnick JL, Adam LP and Gerthoffer WT (2000) Evidence for modulation of smooth muscle force by the p38 MAP kinase/HSP27 pathway. *Am J Physiol Heart Circ Physiol* **278**(6):H1899-1907.
- Yue TL, Gu JL, Wang C, Reith AD, Lee JC, Mirabile RC, Kreutz R, Wang Y, Maleeff B, Parsons AA and Ohlstein EH (2000) Extracellular signal-regulated kinase plays an essential role in hypertrophic agonists, endothelin-1 and phenylephrine-induced cardiomyocyte hypertrophy. *J Biol Chem* **275**(48):37895-37901.
- Zhao Y, Long W, Zhang L and Longo LD (2003) Extracellular signal-regulated kinases and contractile responses in ovine adult and fetal cerebral arteries. *J Physiol* **551**(Pt 2):691-703.
- Zubkov AY, Rollins KS, Parent AD, Zhang J and Bryan RM, Jr. (2000) Mechanism of endothelin-1-induced contraction in rabbit basilar artery. *Stroke* **31**(2):526-533.

MOL #39602

Footnotes

This work was supported by grants from the Canadian Institute of Health Research (CIHR, MOP-64194 and MOP-5334) and the Alzheimer's Society of Canada. The authors are most grateful to Dr P Barker (Montreal Neurological Institute, McGill University) for his help with the siRNA experiments, and we thank Mr. JP Acco and Ms L Michel for their respective help with the figures and preparation of the final manuscript.

Reprint request to:

Edith Hamel, PhD

E-Mail: edith.hamel@mcgill.ca

MOL #39602

Figure Legends

Figure 1. (A) ET-1-induced contractions were decreased in MCA segments from 18 month-old TGF⁺ mice (▲, n=9) as compared to wild-type (WT) littermate controls (●, n=9). In contrast, the contractions induced by 5-HT (n=6) and PE (n=3-4) were unaltered. (B) In pial vessels from TGF⁺ mice ETB, but not ETA, receptor levels were increased as compared to WT littermate controls. (C) Respective blockade of ETB receptors with BQ-788 (10⁻⁷M) or ETA receptors with BQ-123 (10⁻⁷M, shown here in PCAs from TGF⁺ mice) antagonised the ET-1-induced contractions in WT and TGF⁺ mice, with potencies corresponding to their affinities at ETA receptors (see text). *:p<0.05, **:p<0.01.

Figure 2. Concentration-response curves to ET-1 (A) or PE (D) in WT mice under control conditions (●), after inhibition of MEK with U-0126 (▲, 10μM) or p38 MAPK with SB-203580 (○, 50μM). Decreases in the ET-1- or PE-induced contractions occurred without change in ET-1 (respective pEC₅₀ values of 7.71±0.13, 8.0±0.13 and 7.90±0.10) or PE (pEC₅₀ values of 5.69±0.19, 5.43±0.15 and 5.40±0.21, respectively) potency. *:p<0.05, ***:p<0.001. Phosphorylation of p38 (pp38) (B) or ERK (pERK) (C) induced by ET-1 in cerebrovascular SMC was affected by inhibition of p38 MAPK (SB-203580, 25μM) or MEK (U-0126, 10μM), as determined by Western blotting and densitometry analysis using p38 and ERK as baseline (n=3 independent experiments). *:p<0.05 as compared to baseline (show the stimulatory effect of ET-1), and ★:p<0.05, ★★:p<0.01, as compared to the ET-1 effect (show the inhibitory effect of each inhibitor). (E) Similarly, the PE-induced phosphorylation of p38 MAPK and ERK (pp38 or pERK) was reduced by their respective inhibition with SB-203580 and U-0126, as shown from a representative Western blot from three different experiments.

MOL #39602

Figure 3. (A) Treatment of SMC with TGF- β 1 induced expression of COX-2 but not COX-1. COX-2 was increased, albeit non-significantly, by 24 hr and remained upregulated for the 72 hr of the experiment (*:p<0.05, ANOVA followed by a Dunnett's post-hoc comparison test), as shown in both the nucleus and cytoplasm of cells treated for 72 hr and double-immunostained for SMC-actin (green, showing actin filaments) and COX-2 (red) (right panel). Values are mean \pm SEM of densitometry readings (n=3 independent experiments). (B) TGF- β 1 induced phosphorylation of p38 and ERK with different time courses. Activation of p38 MAPK (pp38) was progressive over a 1 hr period and returned to pre-stimulated levels by 24 hr, whereas ERK phosphorylation (pERK) was rapid and brief and levels were back to pre-stimulated values by 1 hr. Controls for COX-1 and COX-2 loading are p38 and ERK as they are from the same gels.

Figure 4. TGF- β 1 selectively affects p38 MAPK/HSP27 (A) but not ERK (B) activation. Stimulation of cerebrovascular SMC with ET-1 induced phosphorylation of the p38 MAPK/HSP27 and ERK pathways (*:p<0.05), but treatment with TGF- β 1 prior to ET-1 stimulation selectively decreased the ET-1-mediated p38 MAPK/HSP27 activation (\star :p<0.05, compared to the ET-1 effect). COX-2 expression confirmed that SMC were activated upon exposure to TGF- β 1. (C) In contrast, A β ₁₋₄₀ treatment had no inhibitory effect of ET-1-induced p38 MAPK activation. Values are mean \pm SEM of densitometry readings (n=3 to 6 experiments).

Figure 5. (A) Representative Western blots for ETA and ETB receptors, and COX-2 in cerebrovascular SMC treated TGF- β 1. While the cells reacted to treatment, as shown by COX-2 induction, ETA and ETB receptors were unchanged. (B, C) Similarly, TGF- β 1 did not alter ET-

MOL #39602

1-induced phosphorylation of MKK3/6, as shown in representative Western blots (B) and quantified by densitometry readings (C). *: $p < 0.05$ as compared to baseline ($n = 3$ experiments).

Figure 6. (A, B) Exposure of cerebrovascular SMC to TGF- β 1 inhibited the ET-1-mediated p38 MAPK activation concomitantly with increased MKP-1 expression, the latter was blocked by increasing concentrations of Ro-31-8220, as illustrated by representative Western blots (A) and quantified by densitometry (B, $n = 6$ different experiments) ***: $p < 0.001$. (C) Double-immunostaining for SMC-actin filaments (Cy3, red) and MKP-1 (Cy2, green) in SMCs at rest, following treatment with TGF- β 1, or with TGF- β 1 and Ro-31-8220 showed increased expression of MKP-1 primarily in the nucleus but also in the cytoplasm of cells treated with TGF- β 1 (second panel). In cells treated with Ro-31-8220, the TGF- β 1-induced expression of MKP-1 was abrogated ($n = 5$ independent experiments). (D) In contrast, the inhibitory effect of TGF- β 1 on the ET-1-induced activation of the p38 MAPK/HSP27 pathway (pp38 and pHSP27, respectively) was not affected by selective inhibition of PKC with GF 109203X (representative Western blots from 3 different experiments). Loading is comparable for all samples as shown by p38 MAPK.

Figure 7. (A) In SMC transfected with MKP-1 siRNA, but not with control siRNA, the inhibitory effect of TGF- β 1 on the ET-1-induced p38 MAPK activation was prevented concurrently with downregulation of MKP-1 expression. *: $p < 0.05$ and ***: $p < 0.001$ as compared to control (-) conditions, and **: $p < 0.01$, as compared to the ET-1 effect in the presence of TGF- β 1 without siRNA. (B) This was further confirmed in MPK-1 siRNA transfected SMC immunodetected for SMC actin (Cy3, red) that displayed no detectable MKP-1 protein expression (Cy2, green) similar to unstimulated cells (control).

MOL #39602

Figure 8. Schematic representation of the signaling pathways involved in the ETA receptor-mediated ET-1-induced contraction in mouse cerebral arteries, and how TGF- β 1 can affect this response. ET-1 binds to ETA receptors on SMC membrane and stimulates the p38 MAPK/HSP27 pathway to induce contraction. TGF- β 1, through binding to its receptor complex and, likely, activation of the Smad pathway would induce MKP-1 expression, a negative regulator of p38 MAPK activity, which results in impaired signaling of ET-1A contractile receptors.

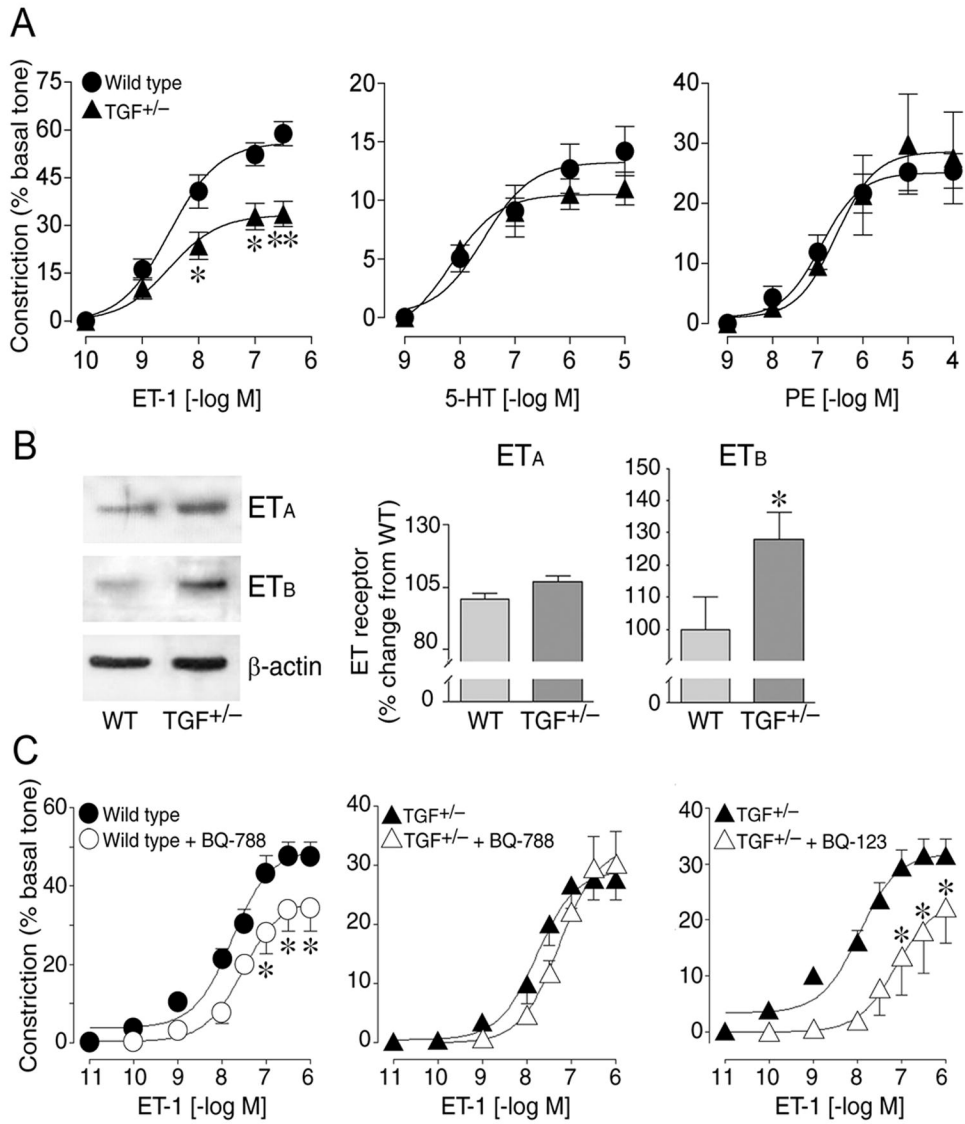


Figure 1

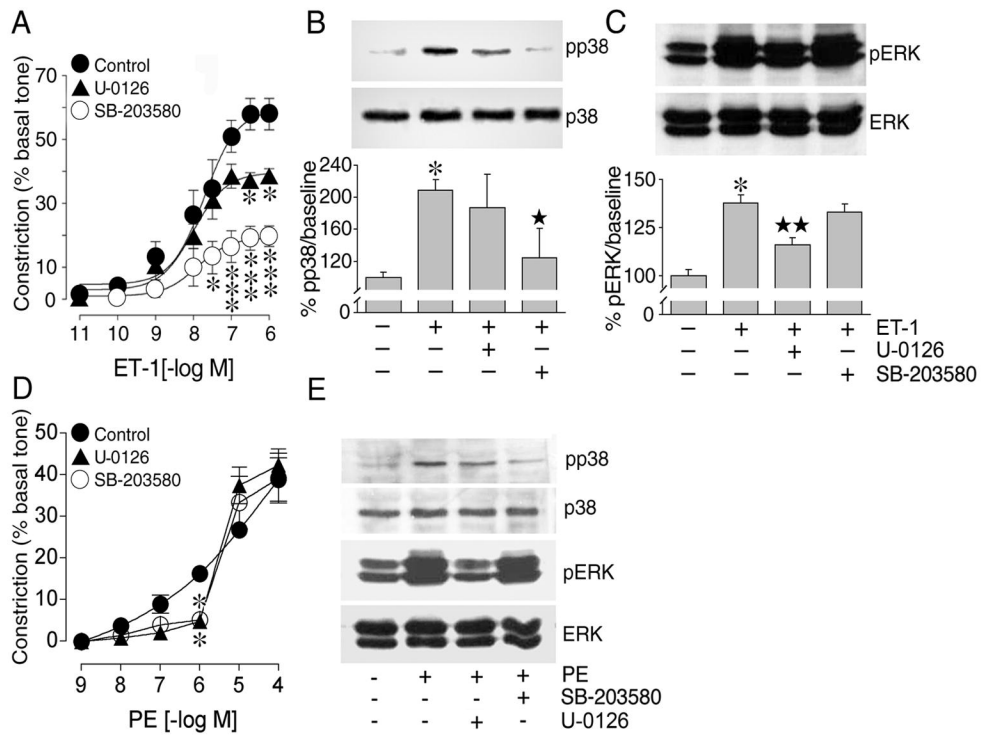


Figure 2

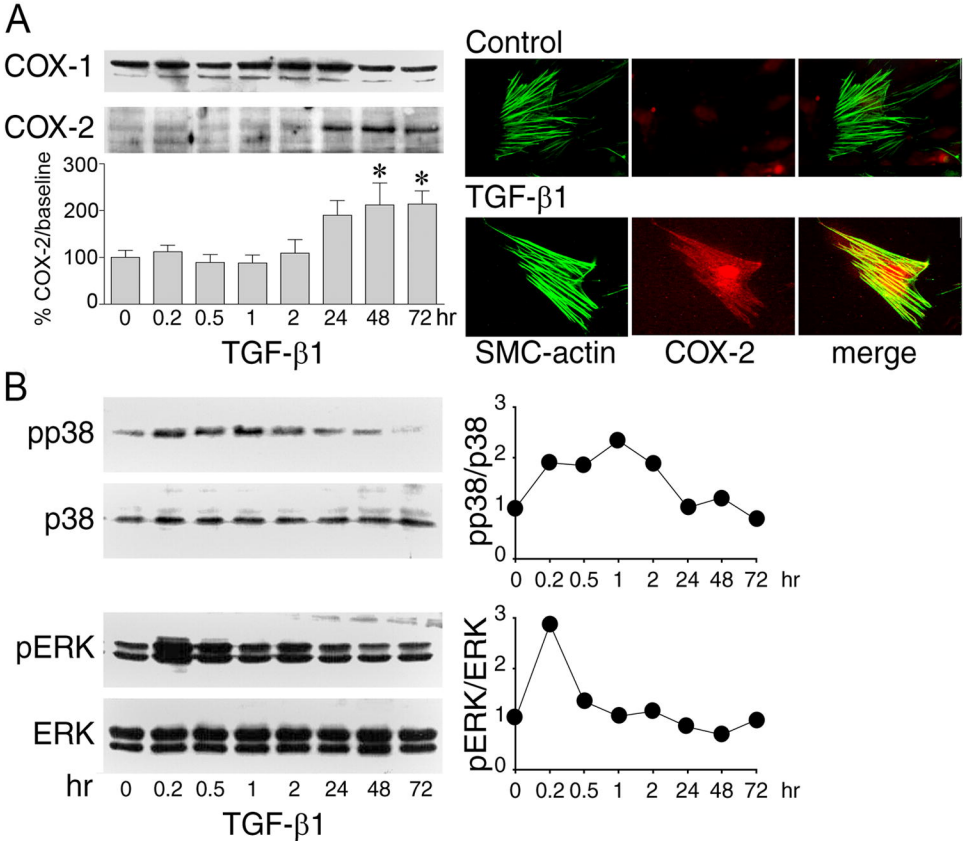


Figure 3

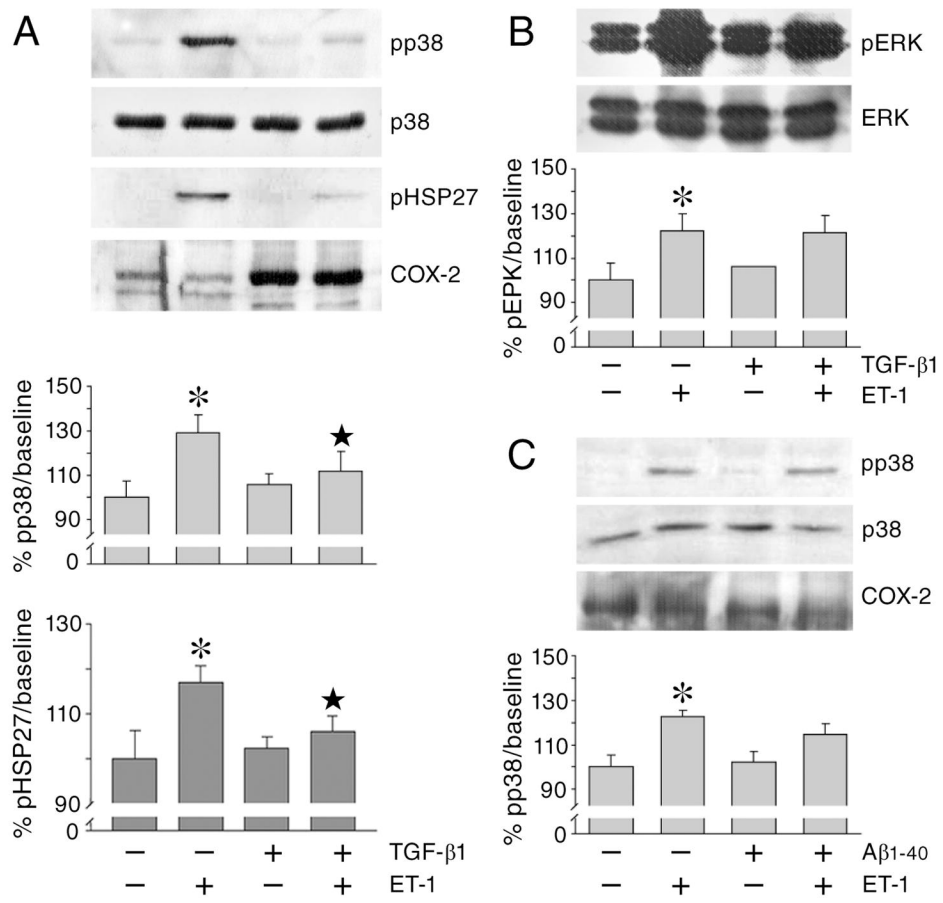


Figure 4

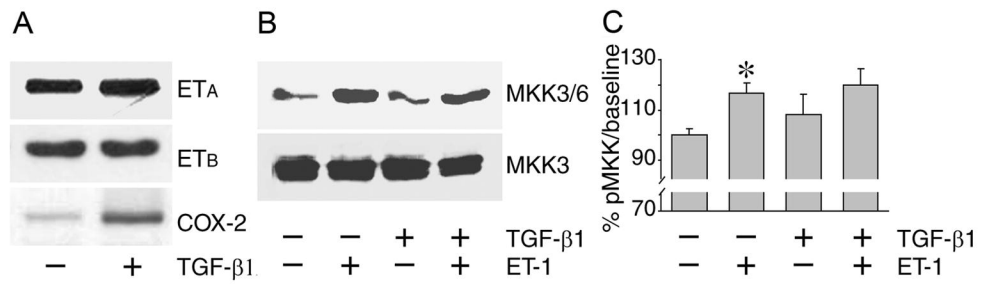


Figure 5

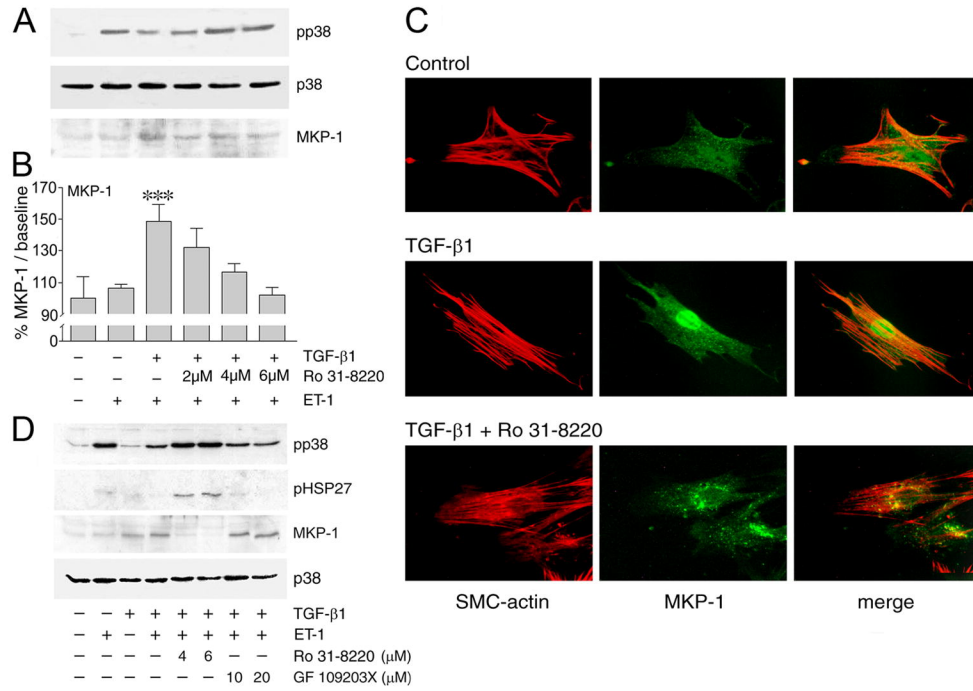


Figure 6

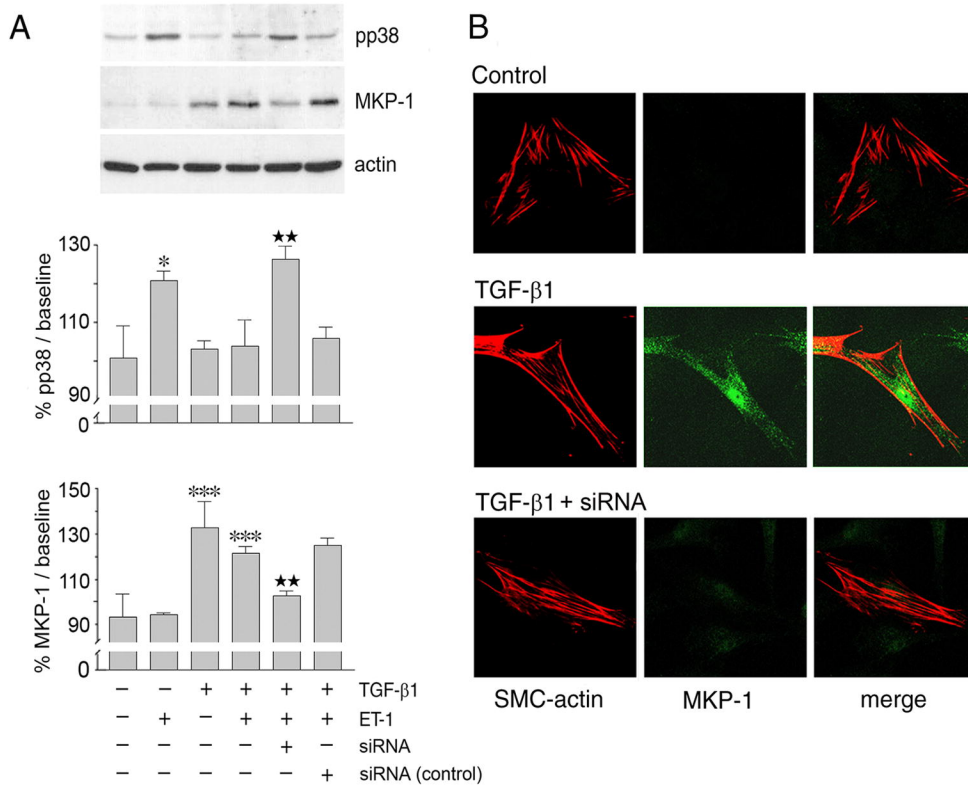


Figure 7

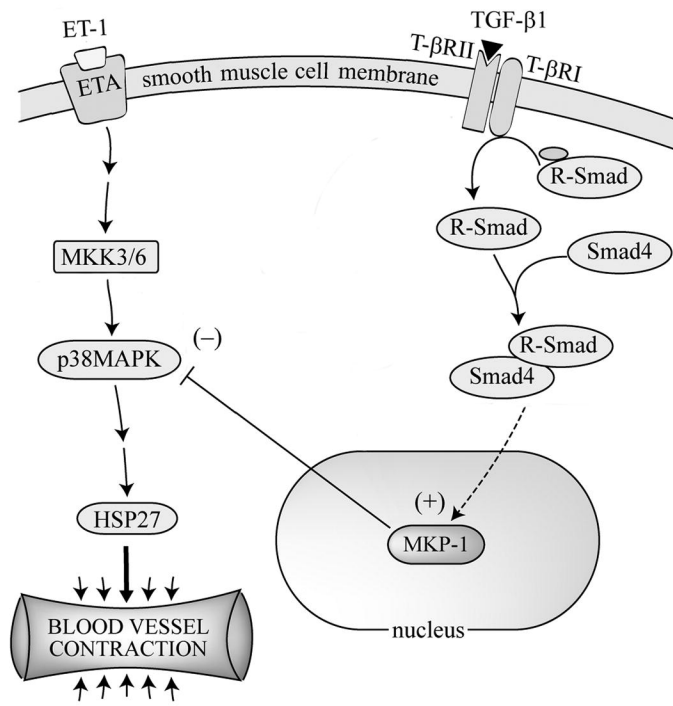


Figure 8