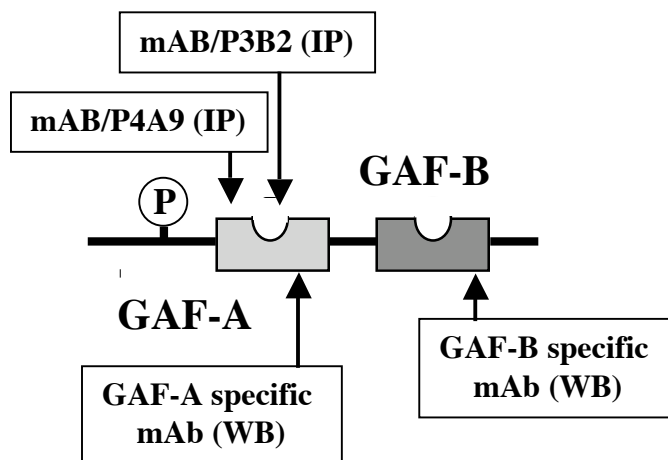


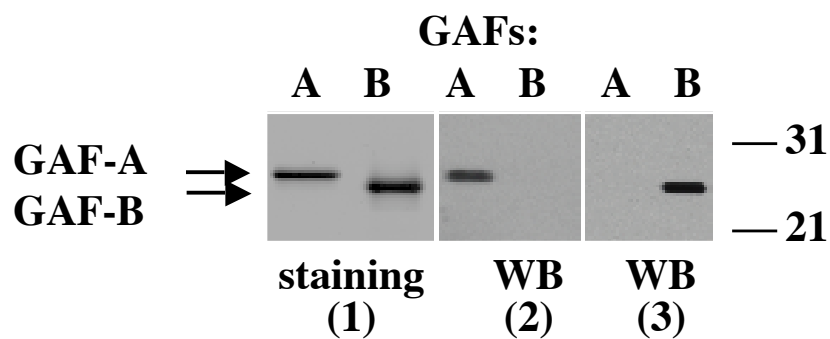
**MULTIPLE AFFINITY STATES OF cGMP-SPECIFIC PDE (PDE5) FOR
SILDENAFIL INHIBITION DEFINED BY cGMP-DEPENDENT AND cGMP-
INDEPENDENT MECHANISMS**

Irina G. Rybalkina, Xiao-Bo Tang, Sergei D. Rybalkin

A



B



Supplemental Figure 1

Supplemental Figure 1. GAF-domain specificity of monoclonal antibodies (mAbs) for PDE5.

(A) Domain organization of the regulatory domain of PDE5 includes N-terminal part, GAF-A and GAF-B domains, connected by a linker. Generation of PDE5 mAbs, including mAb/P3B2 and mAb/P4A9 (A), raised against the total cGMP binding domain, has been described previously.

(B) GAF-A specific (2) and GAF-B (3) specific mAbs were characterized by Western blot analysis. Purified GAF-A (125-320 aa), and GAF-B (334-525 aa) proteins were separated by 12% SDS-PAGE followed by either silver staining (1) or Western blotting using GAF-A specific (2) and GAF-B (3) specific mAbs.