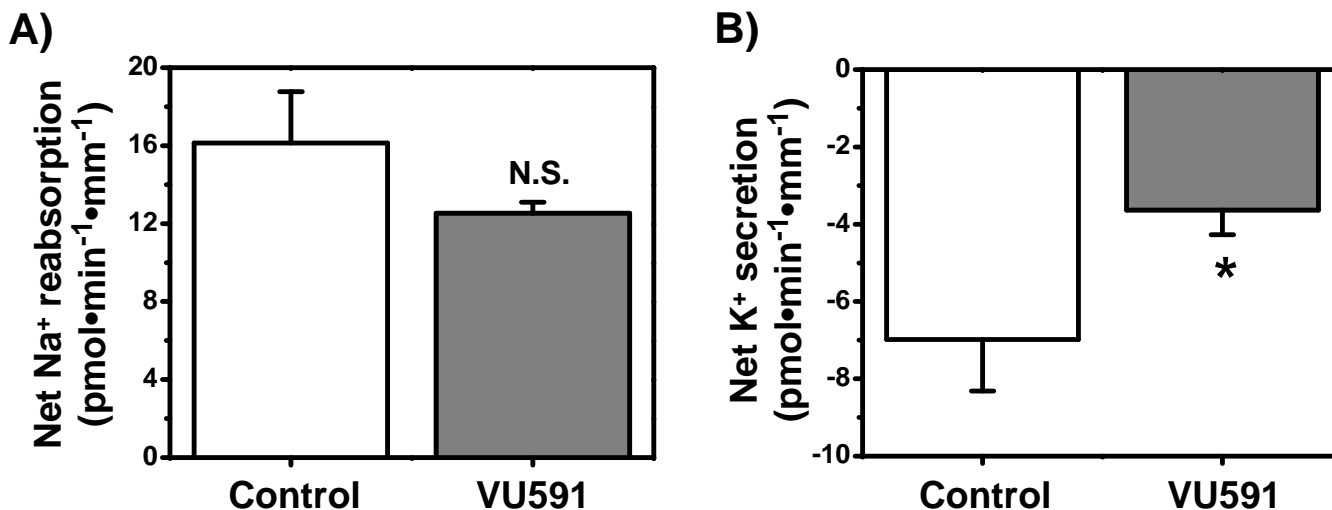


Development of a selective small-molecule inhibitor of Kir1.1, the Renal Outer Medullary Potassium Channel. Gautam Bhave, Brian A. Chauder, Wen Liu, Eric S. Dawson, Rishin Kadakia, Thuy, T. Nguyen, L. Michelle Lewis, Jens Meiler, C. David Weaver, Lisa M. Satlin, Craig W. Lindsley, and Jerod S. Denton. *Molecular Pharmacology*.



Supplemental Figure 6. Effect of VU591 on cation transport in microperfused rat CCDs. Net Na⁺ (A) and K⁺ (B) transport were measured in the absence (control) or presence of 10 μ M VU591 at constant flow rate of 1 nl·min⁻¹·mm⁻¹. Means \pm SEM. *P<0.05 vs. transport rate in control conditions from the same CCDs. N.S. Not statistically significant (P>0.05). (n=4).