

Molecular Pharmacology

The high affinity cAMP-specific phosphodiesterase 8B (PDE8B) controls steroidogenesis in the mouse adrenal gland

Li-Chun Lisa Tsai, Masami Shimizu-Albergine, and Joseph A. Beavo

Supplementary Figure 3

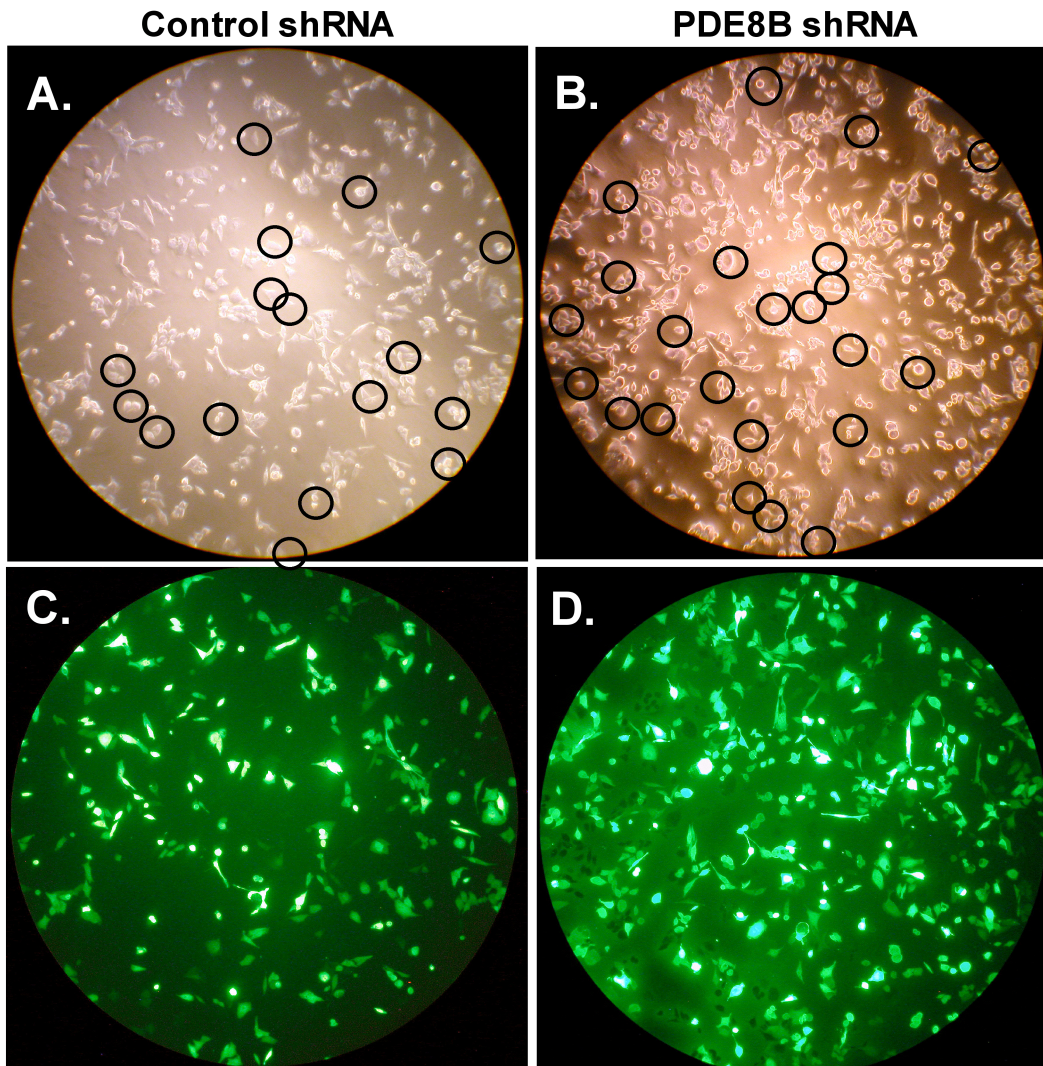


Figure S3. Transfection efficiency of shRNA plasmids. Since the shRNA construct used in these studies also containing an GFP expression cassette we were able to detect transfection efficiency. Shown in the upper pannels are brightfield images of Y-1 cells transfected with (A) negative control plasmids and (B) shRNA plasmids. The lower pannels are the fluorescent images of the same fields of Y-1 cells showing uptake of the negative control plasmids (C) and the shRNA plasmids (D). We detected at least three types of cells: highly transfected cells showing in the saturated greenish white color, the modestly transfected green colored cells, and the non-transfected or barely transfected cells are not showing in the fluorescent images (some examples of non-transfected cells are circled in A and B). In both cases, we counted ~70% of the cells were transfected. Suggesting that this shRNA is highly efficient in knocking down PDE8B.