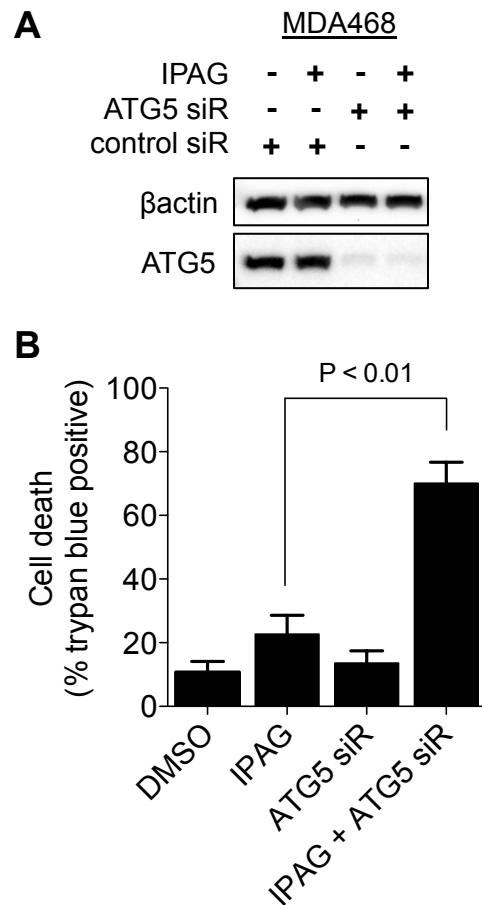


## Supplemental Figure 2

### Sequential cytoprotective responses to Sigma1 ligand induced endoplasmic reticulum stress

Joel M. Schrock, Christina M. Spino, Charles G. Longen, Stacy M. Stabler, Jacqueline C. Marino, Gavril W. Pasternak, Felix J. Kim



**Supplemental Figure 2. Inhibition of autophagosome formation by ATG5 RNAi accelerates Sigma1 ligand induced cell death.** ATG5 or control siRNA (siR) was transfected 72 hours prior to treatment with Sigma1 ligand. **A.)** Immunoblot confirming siRNA mediated ATG5 knockdown. Cells were treated for 24 hours with 10 $\mu$ M IPAG (Sigma1 putative antagonists). Suppression of IPAG-induced autophagy confirmed by immunoblot of LC3B. **B.)** IPAG induced cell death in ATG5 knockdown cells, 72 hours following ATG5 siRNA (siR) transfection. Cell death is measured by trypan blue exclusion, and is presented as the percentage of dead cells in a counted population. Data are from at least 3 determinations.