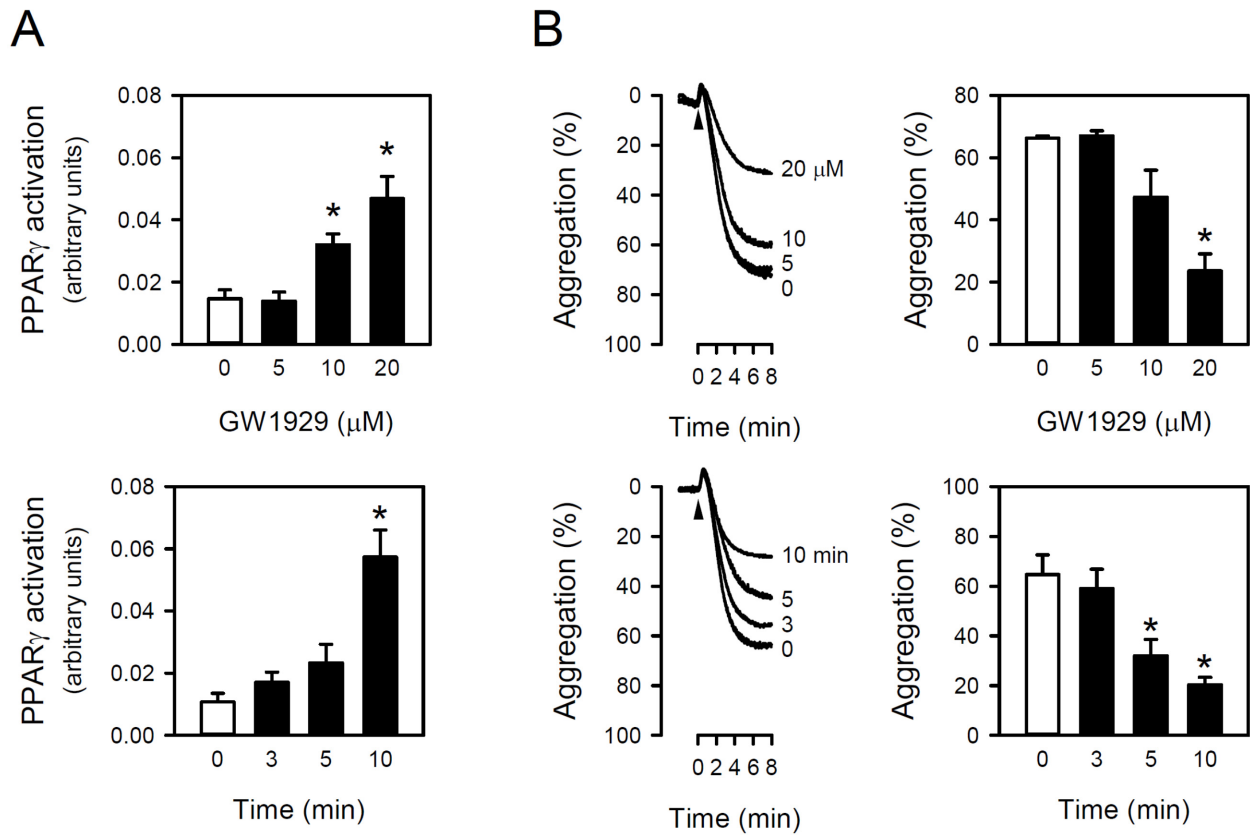


## **Supplemental Data**

### **AMP-activated Protein Kinase Mediates the Antiplatelet Effects of the Thiazolidinediones Rosiglitazone and Pioglitazone**

Yingqiu Liu, Jung-Min Park, Kyung-Hwa Chang, Hee Jin Huh, Kyeong Lee, and Moo-Yeol Lee

MOLECULAR PHARMACOLOGY



**Supplemental Fig. 1.** The PPAR $\gamma$  activator, GW1929, inhibits platelet aggregation. (A) PPAR $\gamma$  activation induced by GW1929. Platelets were incubated with either the indicated concentrations of GW1929 for 10 min (upper panel) or with 20  $\mu$ M GW1929 for the indicated times (lower panel). (B) Aggregation inhibitory effect of GW1929. Platelets were treated with GW1929, as described in A, and aggregation was induced by the addition of 2.5  $\mu$ g/ml collagen (indicated by arrowhead). Representative tracings and the aggregation percentages are presented in the left and right panels, respectively. Values are means  $\pm$  standard errors (n=8 for A upper panel, 6 for A lower panel, and 3 for B). \* $P$  < 0.05 vs. control.