

SUPPORTING INFORMATION

Active-site tryptophan, the target of anti-neoplastic CtBP inhibitors, mediates inhibitor disruption of CtBP oligomerization and transcription coregulatory activities

M. Michael Dcona, Priyadarshan K. Damle#, Francisco Zarate-Perez#, Benjamin L. Morris#, Zaid Nawaz, Michael J. Dennis, Xiaoyan Deng, Sudha Korwar, Sahib J. Singh, Keith C. Ellis, William E. Royer, Dipankar Bandyopadhyay, Carlos Escalante, and Steven R. Grossman *

Sections:

1. Extended Figure legends
2. Supplemental figures

1. Extended Figure Legends

Supplemental Figure-1 AUC sedimentation coefficient distribution of *st.mt*-CtBP2 (27.2 μ M) in its native form and in the presence of 10 μ M NAD(H).

Supplemental Figure-2 AUC sedimentation coefficient distribution of 27.2 μ M of *st. wt*-CtBP2 in its native form and in the presence of 10 μ M NAD(H) and varying doses of 4-Cl-HIPP

Supplemental Figure-3 Densitometry calculation for GST-*wt*-CtPB2 and His-*wt*-CtBP2 and His-G189A-CtBP2.

Supplemental Figure-4 GST pulldown assay to describe the interaction inhibition between bead immobilized GST-CtBP2 (31-364) and *st. wt*-CtBP2 in the presence of 10 μ M NAD(H) and increasing concentration of either 4-Cl-HIPP or 4-OMe-HIPP (negative control)

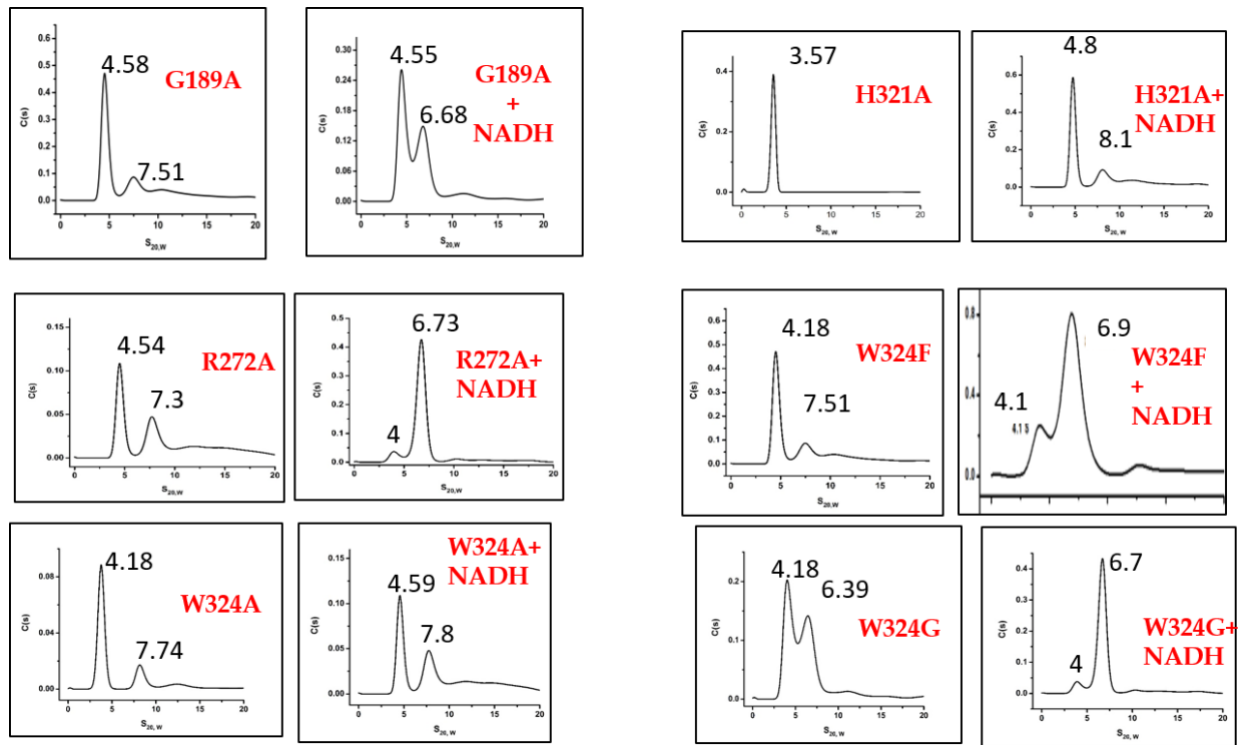
Supplemental Figure-5 Cartoon representing cross-linking reaction.

Supplemental Figure-6 Blots representing transfection efficiency of cells transfected with either EV, *wt* or *mt*-CtBP2 for QPCR assay

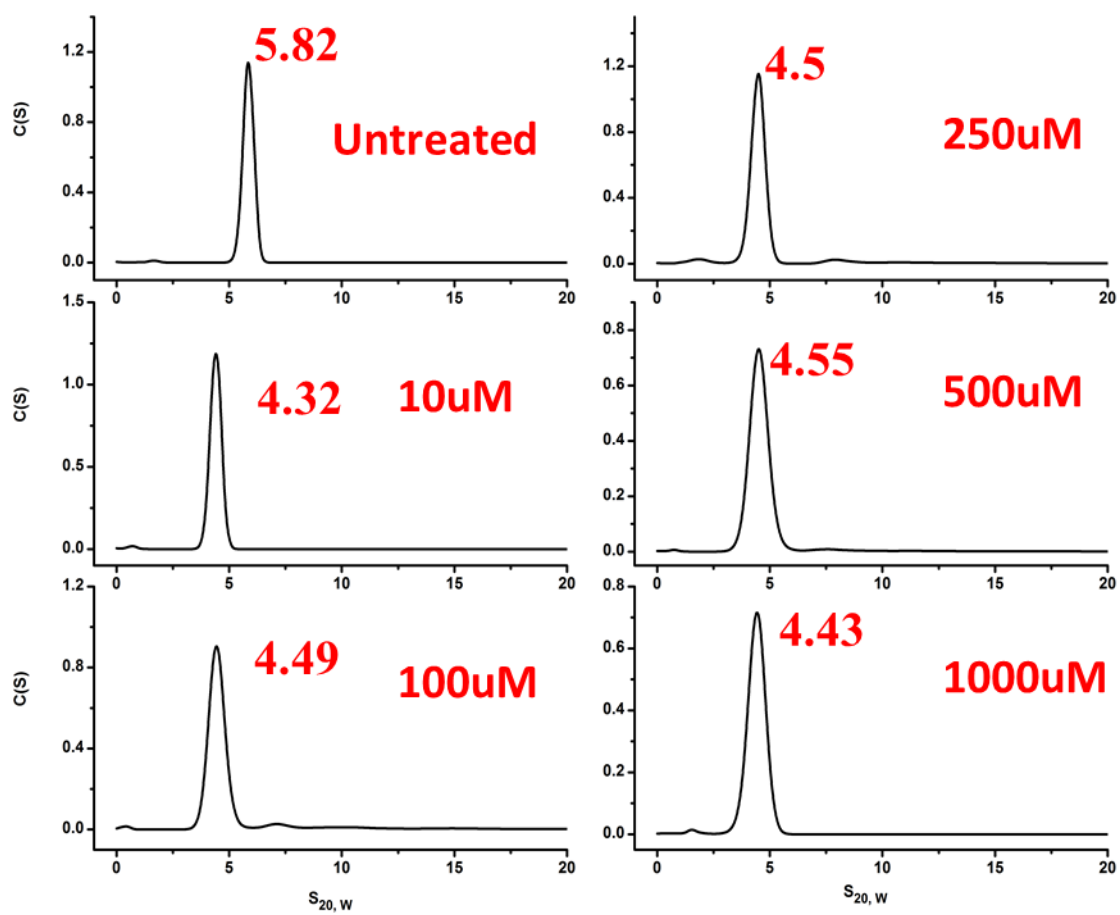
Supplemental Figure-7 Blots representing transfection efficiency of cells transfected with either EV, *wt* or *mt*-CtBP2 for migration assay

2. Supplemental figures

Supplemental Figure-1



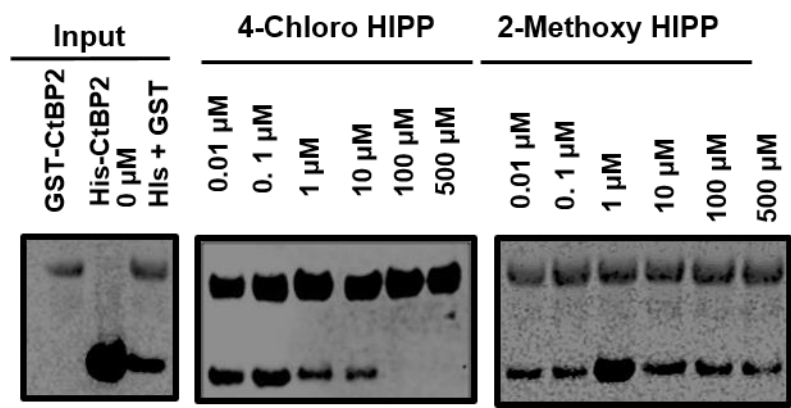
Supplemental Figure-2



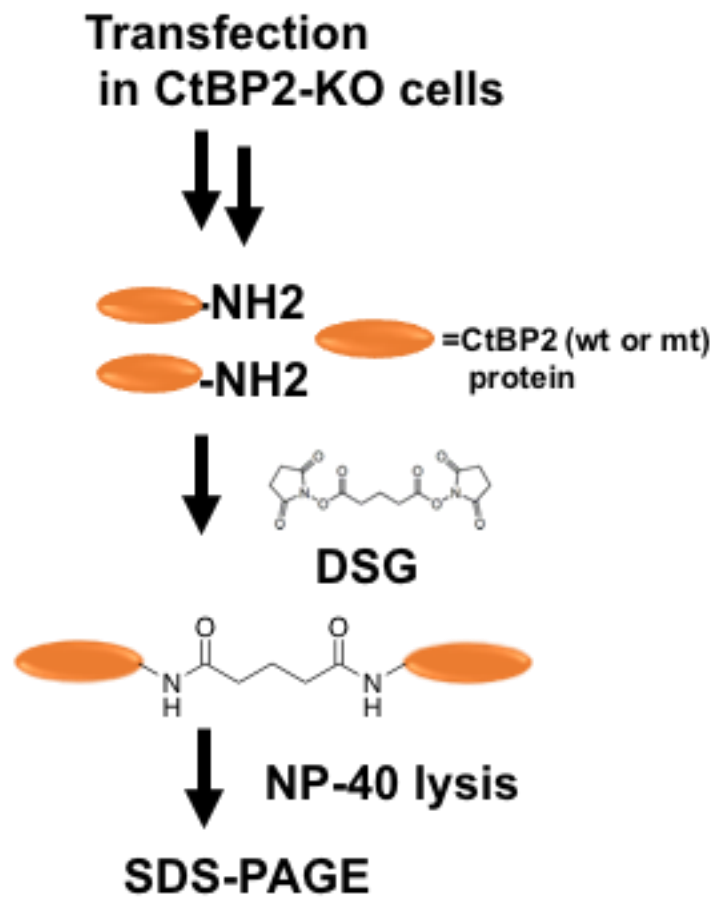
Supplemental Figure-3 Densitometry calculation for GST-wt-CtPB2 and His-*wt*-CtBP2 and His-*G189A*-CtBP2.

Absolute density	GST/His CtBP2-Wt	GST-Wt/ His-G189A
	103	30
	171	38
	162	68
	171	69
Normalized density	100	29.12
	100	22.22
	100	41.97
	100	40.35

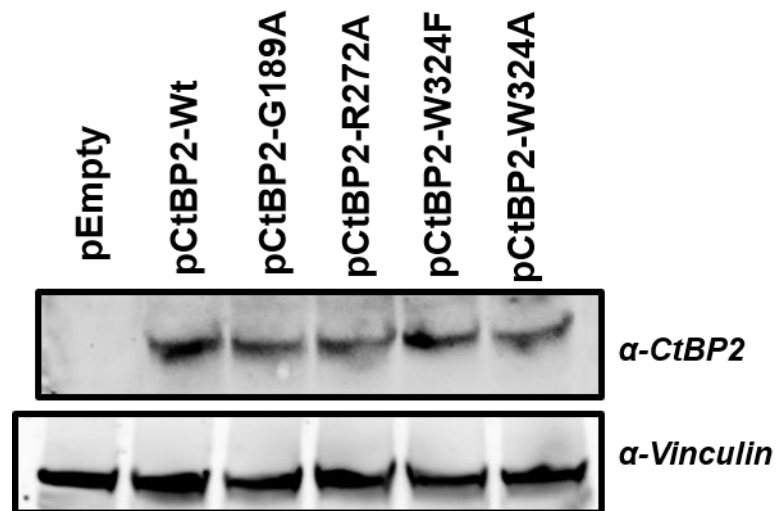
Supplemental Figure-4



Supplemental Figure-5



Supplemental Figure-6



Supplemental Figure-7

