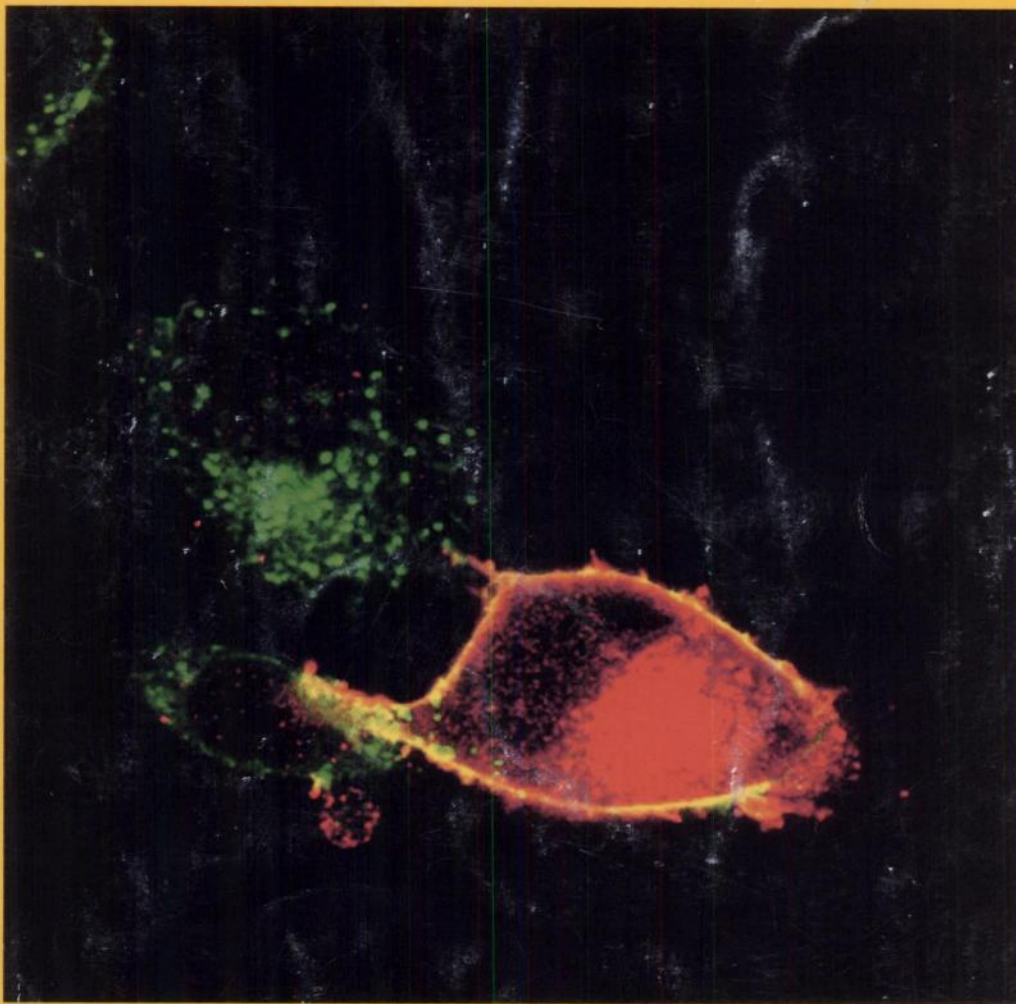


DBB

VOLUME 50  
NUMBER 2  
AUGUST 1996

# MOLECULAR PHARMACOLOGY

FOUNDED 1965 BY AVRAM GOLDSTEIN



A PUBLICATION OF THE AMERICAN SOCIETY FOR  
PHARMACOLOGY AND EXPERIMENTAL THERAPEUTICS

Published by Williams & Wilkins

## INFORMATION FOR SUBSCRIBERS

**MOLECULAR PHARMACOLOGY (MOL/ISSN 0026-895X)** is an official publication of The American Society for Pharmacology and Experimental Therapeutics and is published by Williams & Wilkins, 351 West Camden Street, Baltimore, MD 21201-2436. Periodicals Postage paid at Baltimore, MD and at additional mailing offices. **POSTMASTER:** Send address changes to MOLECULAR PHARMACOLOGY, 351 West Camden Street, Baltimore, MD 21201-2436.

**Frequency:** *Monthly:* Two volumes a year beginning in January and July. Printed on acid-free paper.

**Correspondence concerning business matters should be addressed to:** Customer Service, Subscriptions, Williams & Wilkins, 351 West Camden Street, Baltimore, MD 21201-2436. Telephone 1-800-638-6423 from anywhere in the U.S. and Canada. From other countries, call 410-528-8555. Fax: 410-528-8596.

**Correspondence regarding editorial matters should be addressed to the Editor:** Dr. Raymond J. Dingleline, Editor, *Molecular Pharmacology*, Emory University School of Medicine, 1510 Clifton Road, Room 5001, Atlanta, Georgia 30322-3090, U.S.A. Telephone: 404-727-0362, Fax: 404-727-4242.

**For information on Society membership, contact:** The American Society for Pharmacology and Experimental Therapeutics, 9650 Rockville Pike, Bethesda, MD 20814. Telephone: 301-530-7060. Fax: 301-530-7061.

**Instructions to Authors** appears in every issue.

**Annual Subscription Rates:** U.S.: *Personal* \$105; *Institutional* \$230; *Single copy* \$19. **Outside the U.S., except Japan:** *Personal* \$135; *Institutional* \$260; *Single copy* \$23.

**Institutional (multiple reader) rate** applies to libraries, schools, hospitals, clinics, group practices, and federal, commercial and private institutions and organizations.

**For Japanese rates, please contact:** Igaku-Shoin MYW Ltd., 3-23-14 Hongo, Bunkyo-Ku, Tokyo 113, JAPAN. Telephone: 03-5689-5400 or 5401. Fax: 03-5689-5402.

PRICES ARE SUBJECT TO CHANGE.

The GST number for Canadian subscribers is 123394371. Country of origin USA. C.P.C. Int'l Publication Mail #0059870.

**New subscriptions** received before May 1st of each year will begin with the first issue of the year. Subscriptions received between May 1st and October 31st will start with the midyear issue (July). Subscriptions received after October 31st will start with the first issue of the following year. Subscriptions may start with any current volume's issue upon request.

**Renewals** should be done *promptly* to avoid a break in journal delivery. The publisher cannot guarantee to supply back issues on late renewals.

**Change of address:** The publisher must be notified 60 days in advance. Journals undeliverable because of incorrect address will be destroyed. Duplicate copies may be obtained, if available, from the publisher at the regular price of a single issue. Send address changes to MOLECULAR PHARMACOLOGY, 351 West Camden Street, Baltimore, MD 21201-2436. **If a member**, please contact the Society with your change.

**Reprints of individual articles** are available only from the authors.

**Reprints in large quantities** for commercial or academic use may be purchased from the publisher. For information and prices call 410-528-4292.

**Microfilm and Microfiche:** Prices are available upon request. Microfilm editions may be ordered from Williams & Wilkins.

**The Journal subscription list** is available for rental on a controlled basis from Williams & Wilkins. All promotional literature must be approved in advance.

**Disclaimer:** The statements and opinions contained in the articles of MOLECULAR PHARMACOLOGY are solely those of the individual authors and contributors and not of The American Society for Pharmacology and Experimental Therapeutics or Williams & Wilkins. The appearance of advertisements in the Journal is not a warranty, endorsement or approval of the products or safety. The American Society for Pharmacology and Experimental Therapeutics and the publisher disclaim responsibility for any injury to persons or property resulting from any ideas or products referred to in the articles or advertisements.

**Volume indexes** appear in the June and December issues.

**Indexing/Abstracting Services:** The Journal is currently included by the following services in print and/or electronic format: *Index Medicus*, *Current Contents (Life Sciences)*, *Excerpta Medica*, *Current Awareness in Biological Sciences*, and *Reference Update / Research Information Systems*.

**Copyright Information:** MOLECULAR PHARMACOLOGY is copyrighted by the American Society for Pharmacology and Experimental Therapeutics. No portion(s) of the work(s) may be reproduced without written consent from Williams & Wilkins. Permission to reproduce copies of articles for non-commercial use may be obtained from the Copyright Clearance Center, 222 Rosewood Drive, Danvers, MA 01923, (508) 750-8400, with a fee of \$3.00 per copy.

*Copyright © 1996 by The American Society for Pharmacology and Experimental Therapeutics.*

# Leading Pharmacology Journals

Publications of the American Society for Pharmacology and Experimental Therapeutics, Inc.

## The Journal of Pharmacology and Experimental Therapeutics

Editor: John A. Harvey, Ph.D.

**JPET** is respected the world over as one of the leading research journals in the field of pharmacology. You'll find broad coverage of all aspects of the interactions of chemicals with biological systems, including autonomic, behavioral, cardiovascular, cellular, clinical, developmental, gastrointestinal, immuno-, neuro-, pulmonary, and renal pharmacology, as well as analgesics, drug abuse, metabolism and disposition, chemotherapy, and toxicology. *Monthly.*

## Drug Metabolism and Disposition: The Biological Fate of Chemicals

Editor: Raymond F. Novak, Ph.D.

**Drug Metabolism and Disposition** publishes experimental results from *in vitro* and *in vivo* systems that bring you significant and original information on metabolism and disposition of endogenous and exogenous compounds, including pharmacologic agents and environmental chemicals. The areas covered are: xenobiotic metabolism, expression of drug metabolizing enzymes, regulation of drug metabolizing enzyme gene expression, pharmacokinetics, pharmacodynamics and toxicological consequences of xenobiotic metabolism. *Monthly.*

## Pharmacological Reviews

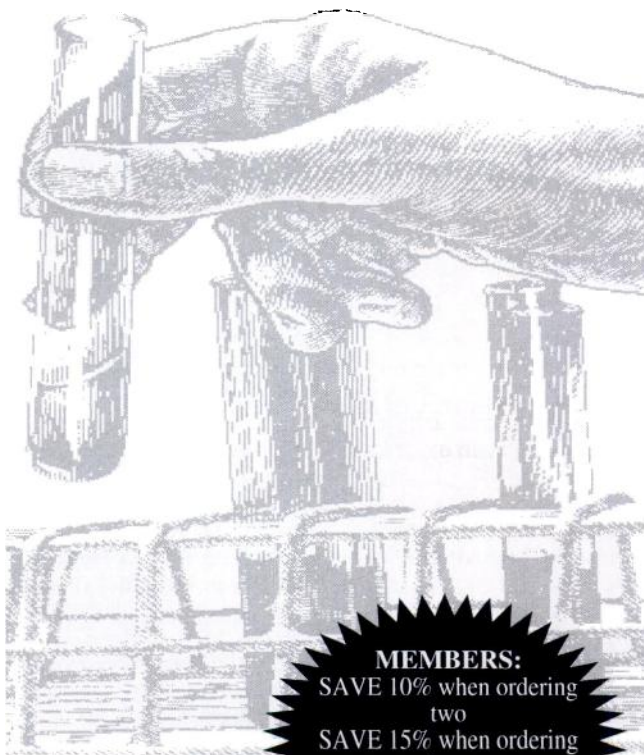
Editor: David B. Bylund, Ph.D.

**Pharmacological Reviews** is a showcase for important review articles in your field, featuring longer papers on topics of high current interest. The areas covered in review papers have included biochemical and cellular pharmacology, drug metabolism and disposition, renal pharmacology, neuropharmacology, behavioral pharmacology, clinical pharmacology, and toxicology. No library serving the pharmacologic community should be without a subscription. *Quarterly.*

## Molecular Pharmacology

Editor: Raymond Dingleline, Ph.D.

The papers published in **Molecular Pharmacology** are on the cutting edge of research on drug action and selective toxicity at the molecular level. Original applications of biochemistry, biophysics, genetics, and molecular biology are juxtaposed with innovative pharmacologic research to elucidate basic problems in pharmacology and toxicology, including such areas as molecular mechanisms involved in drug receptor-effector coupling, xenobiotic metabolism, and antibiotic and anticancer drug action. *Monthly.*



**MEMBERS:**  
SAVE 10% when ordering two  
SAVE 15% when ordering three  
SAVE 20% when ordering all four publications



Please enter my subscription to the following:

### The Journal of Pharmacology and Experimental

#### Therapeutics (monthly)

Individual \$190/year  Institutional \$370/year (Add \$75/year for subscriptions outside the U.S.; in Canada, also add 7% GST.)

New Subscription  Renewal

Subscribe for:  3 years  2 years  1 year

#### Drug Metabolism and Disposition (monthly)

Individual \$90/year  Institutional \$150/year (Add \$25/year for subscriptions outside the U.S.; in Canada, also add 7% GST.)

New Subscription  Renewal

Subscribe for:  3 years  2 years  1 year

#### Molecular Pharmacology (monthly)

Individual \$115/year  Institutional \$250/year (Add \$35/year for subscriptions outside the U.S.; in Canada, also add 7% GST.)

New Subscription  Renewal

Subscribe for:  3 years  2 years  1 year

#### Pharmacological Reviews (quarterly)

Individual \$65/year  Institutional \$115/year  In-training\* \$50/year (Add \$20/year for subscriptions outside the U.S.; in Canada, also add 7% GST.)

New Subscription  Renewal

Subscribe for:  3 years  2 years  1 year

PT 56640

### Payment Options:

Check enclosed (payable to Williams & Wilkins)

Bill me  American Express

MasterCard  VISA Card # \_\_\_\_\_

Exp. date \_\_\_\_\_ Signature or P.O. # \_\_\_\_\_

Name \_\_\_\_\_

Address \_\_\_\_\_

City/State/Zip \_\_\_\_\_

\* Please indicate institution/status \_\_\_\_\_

MD, IL, and ME subscribers must add state sales tax. Subscriptions outside the U.S. must be prepaid in U.S. dollars. In Japan, contact Igaku-Shoin, MYW, Ltd. (03) 5689-5400. Rates valid through October 31, 1996.

Return coupon to:

**Williams & Wilkins**

A WAVERLY COMPANY

P.O. Box 23291, Baltimore, MD 21203-9990



For credit card orders, call TOLL FREE: 1-800-638-6423 in North America. Outside North America, fax 1-410-361-8048 or call one of our international offices: Tokyo (03) 5689-5400, London 0171-385-2357, Hong Kong 852-2610-2339.

S6J045Z