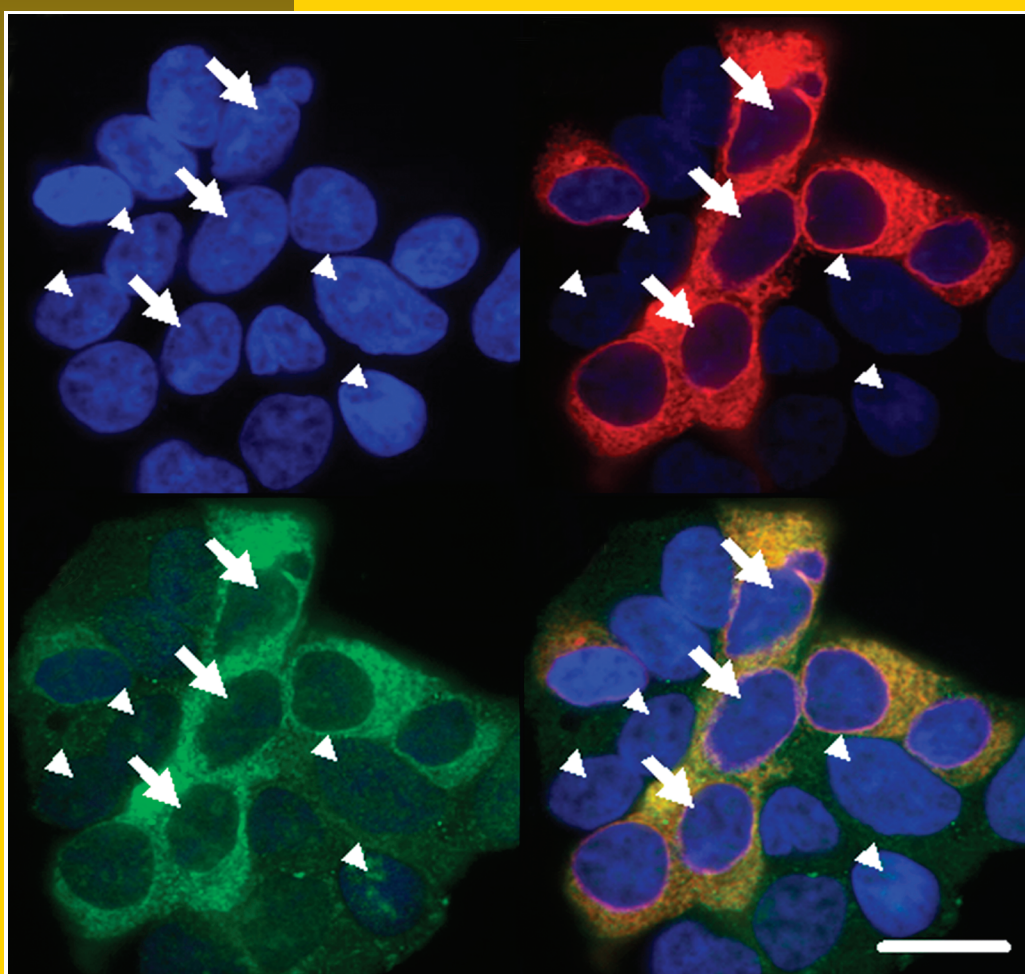


Volume 76 ■ Number 6 ■ December 2009 ■ ISSN 0026-895X

MOLECULAR

PHARMACOLOGY



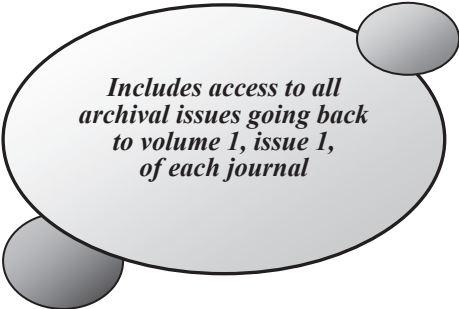
A Publication of the American Society for
Pharmacology and Experimental Therapeutics

ASPET Membership


The Benefits Add Up!

ASPET Membership Includes Online Access to:

Journal of Pharmacology and Experimental Therapeutics
Pharmacological Reviews
Molecular Pharmacology
Drug Metabolism and Disposition
Molecular Interventions (print subscription also included)



*Includes access to all
archival issues going back
to volume 1, issue 1,
of each journal*



*The savings
from one article
pay for a year's
dues*

Members Save 50% on Page Charges and Color Fees

\$40/page for members versus \$80 for nonmembers
\$200/figure for members versus \$400 for nonmembers
Includes *JPET*, *Molecular Pharmacology*, and *DMD*

Reduced Registration Fees for ASPET Meetings — *Including Experimental Biology*

Public Affairs Advocacy for Increased Research Funding and Science Policy
Favorable to Biomedical Research — *Public policy reports provided regularly*

Personal print subscriptions are available only to ASPET Members:

Journal of Pharmacology and Experimental Therapeutics - \$210
Pharmacological Reviews - \$89
Drug Metabolism and Disposition - \$112
Molecular Pharmacology - \$152



*For ASPET
Members
Only!*

Apply for membership online at
www.aspet.org





Experimental Biology is an annual meeting comprised of nearly 13,000 scientists and exhibitors representing six sponsoring societies and 18 guest societies. General fields of study include anatomy, physiology, biochemistry, molecular biology, pathology, nutrition, pharmacology and immunology. EB 2010 is open to all members of the sponsoring and guest societies and nonmembers with interest in research and life sciences. The majority of scientists represent university and academic institutions as well as government agencies, nonprofit organizations and private corporations.

This multidisciplinary, scientific meeting features plenary and award lectures, pre-meeting workshops, oral and poster sessions, on-site career services and an exhibit floor with an array of equipment, supplies and publications required for research labs and experimental study.



EXPERIMENTAL BIOLOGY 2010 OFFERS:

- Access to 6 collective society meetings in one location with one registration fee
- More than 50 concurrent scientific sessions open to all attendees spanning the scientific disciplines of the sponsoring societies
- Over 400 exhibit booths representing nearly 300 companies
- 4 days of poster sessions with over 5,000 poster displays and author presentations
- Over 90 award programs, of more than \$700,000, in travel funding opportunities and poster competitions (awards vary by society)
- Over 65 countries represented annually at the meeting creating a diverse audience
- CME credits available (ASIP sessions only)
- Extensive career development opportunities for students and postdoctoral fellows
- Same registration fees as 2009

MARK YOUR CALENDAR

Experimental Biology 2010 - Today's Research: Tomorrow's Health
April 24 - 28, 2010
Anaheim Convention Center
800 West Katella Avenue
Anaheim, CA 92802

Scientific Sessions: Saturday, April 24 – Wednesday, April 28

Poster Sessions: Sunday, April 25 – Wednesday, April 28

Exhibits: Sunday, April 25 – Tuesday, April 27

Contact us at:

EB2010
9650 Rockville Pike
Bethesda, MD 20814-3998

(T) 301-634-7010
(F) 301-634-7014
or 301-634-7008
eb@faseb.org
www.experimentalbiology.org